

VEHICLE INSPECTION REPORT

YK70EFX

Mercedes-Benz Sprinter 315 CDI

Inspection

Serious Damage? No

Vehicle

VAT Plus VAT

V5 Present

Details

Reg. date 03/12/2020

Year 2020

Mileage 112,085 Miles Not Warranted

Fuel Type Diesel

Colour WHITE

VIN W1V9076352P309019

Body Style Panel Van L3

MOT Due Expired

CAP Clean £11,450.00

CAP Average £10,200.00

CAP Below £8,375.00

Gearbox MANUAL

WARNING LIGHT ON DASH AD-BLUE, SIDE LOAD DOOR

Tyres

NSF

NSR

OSF

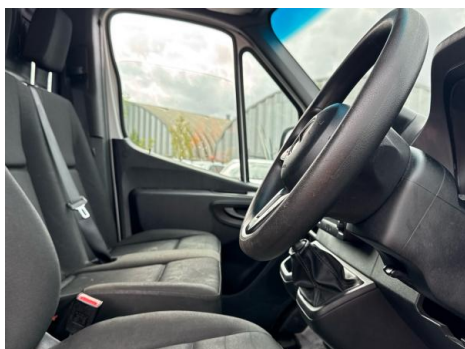
OSR

Spare

Features

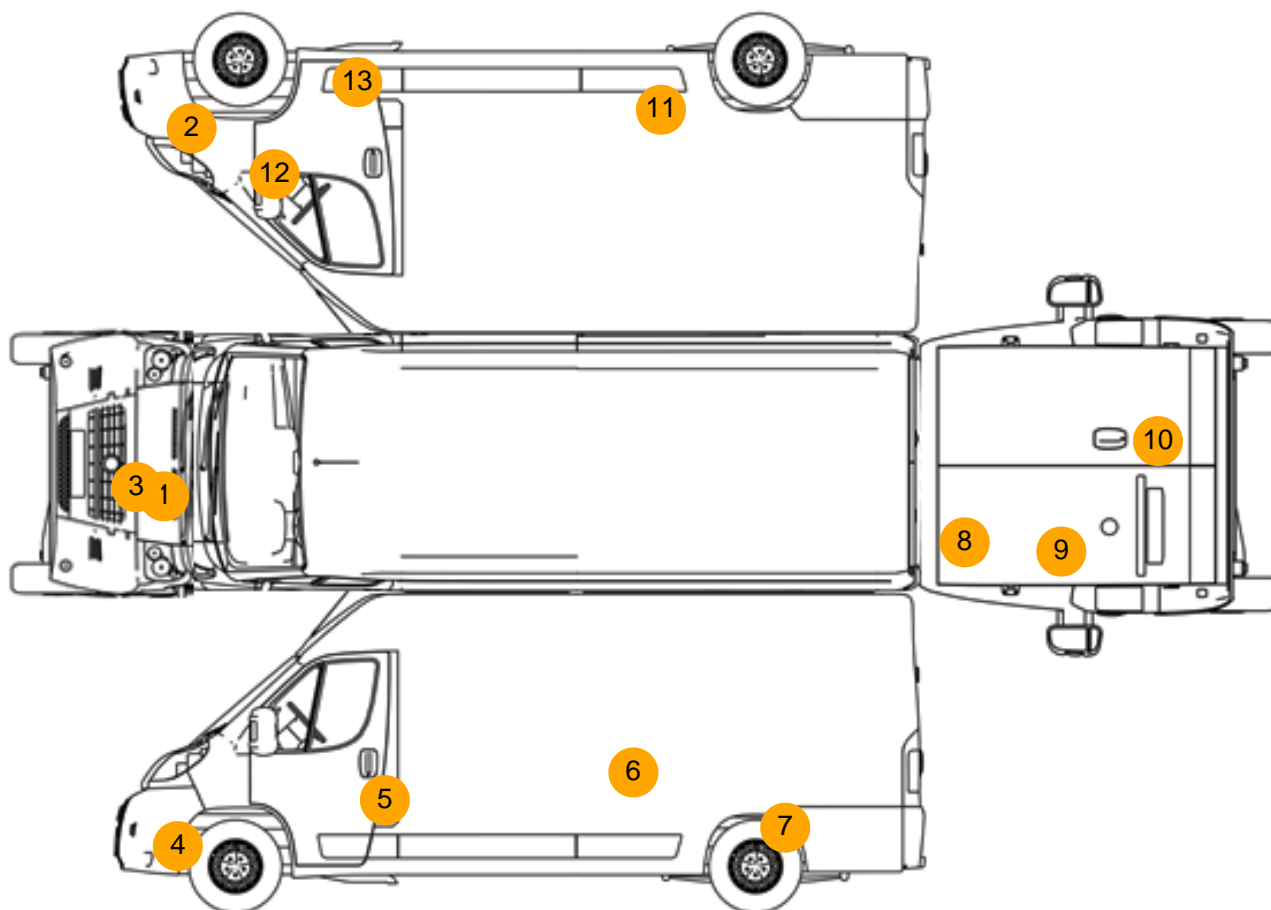
- Bluetooth connection
- Drivers airbag
- Cruise control
- Passenger airbag
- Digital radio
- Central locking
- Front electric windows
- Cloth seat trim

Photos





Condition Check



Damage Photos



1: Bonnet
Dented
With Paint Damage



2: Bumper Front
Scratched
Over 100mm Thru Paint



3: Badgedecal Front
Missing
Replace



4: Bumper Front
Scratched
Over 100mm Thru Paint



5: Door nsf
Dented
Over 30mm



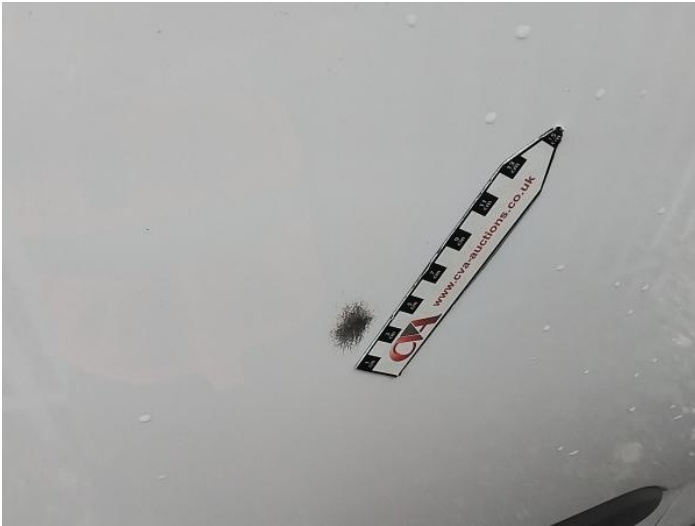
6: Qtr Panel nsr
Dented
Over 30mm



7: Qtr Panel nsr
Poor Previous Repair
Poor Colour



8: Door nsr
Dented
Over 30mm



9: Door nsr
Scratched
Over 25mm Thru Paint



10: Door osr
Poor Previous Repair
Poor Colour



11: Qtr Panel Moulding os
Scuffed (Unpainted)
Over 100mm



12: Wing osf
Dented
Over 30mm



13: Sill os
Dented
With Paint Damage



14: Carpets Front
Holed
Over 3mm



15: Seat Base Cover osf
Torn
Over 3mm



16: Carpets Front
Missing
Replace



17: Seat Base Cover nsf
Soiled
Heavy



18: Dash Warning Lights
Displayed
No Action

Interior

Carpet Condition	Poor	Upholstery Condition	OK
Seat Condition	Poor	Odour	No
Engine Runs	Fault	No Excessive Smoking	OK
EML light illuminated	Fault	DPF light illuminated	OK
ABS light illuminated	OK		