

VEHICLE INSPECTION REPORT

SJ14PKY

Daf LF 150

Inspection

Serious Damage? No

Vehicle

VAT Plus VAT

V5 Present

Details

Reg. date 14/07/2014

VIN XLRAEL1500L434532

Gearbox Automatic

Year 2014

Body Style Mobile Library

Axle Combi 4x2

Mileage 85,044 Km Warranted

Keys 3

Rear Suspension Steel

Fuel Type Diesel

MOT Due 31/07/2025

Colour WHITE

Cab Type DAY CAB

WARNING LIGHTS ON DASH

Tyres

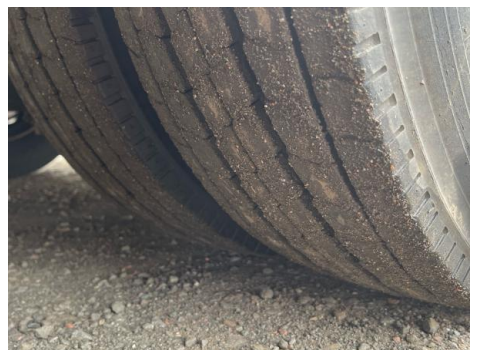
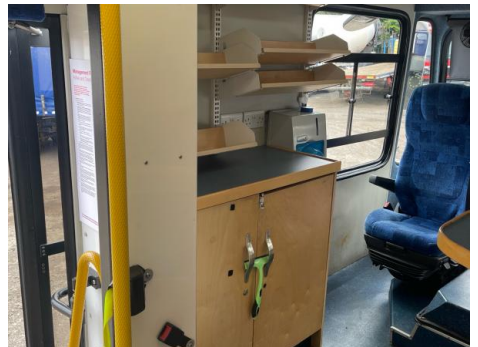
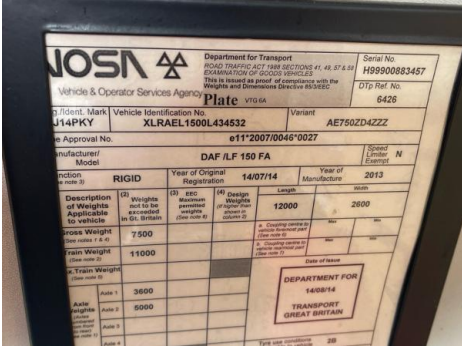
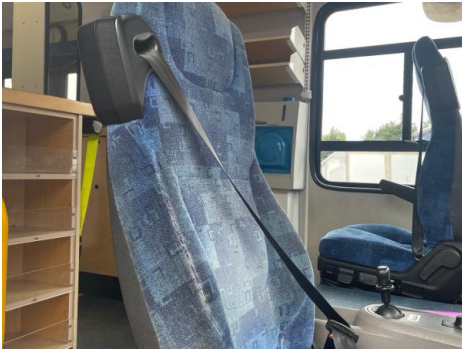
NSF	NSI1	NSI2	NSI3	NSI4
OSF	OSI1	OSI2	OSI3	OSI4
Spare	NSO1	NSO2	NSO3	NSO4
	OSO1	OSO2	OSO3	OSO4

Features

- Bluetooth connection
- Radio/CD
- Cloth seat trim

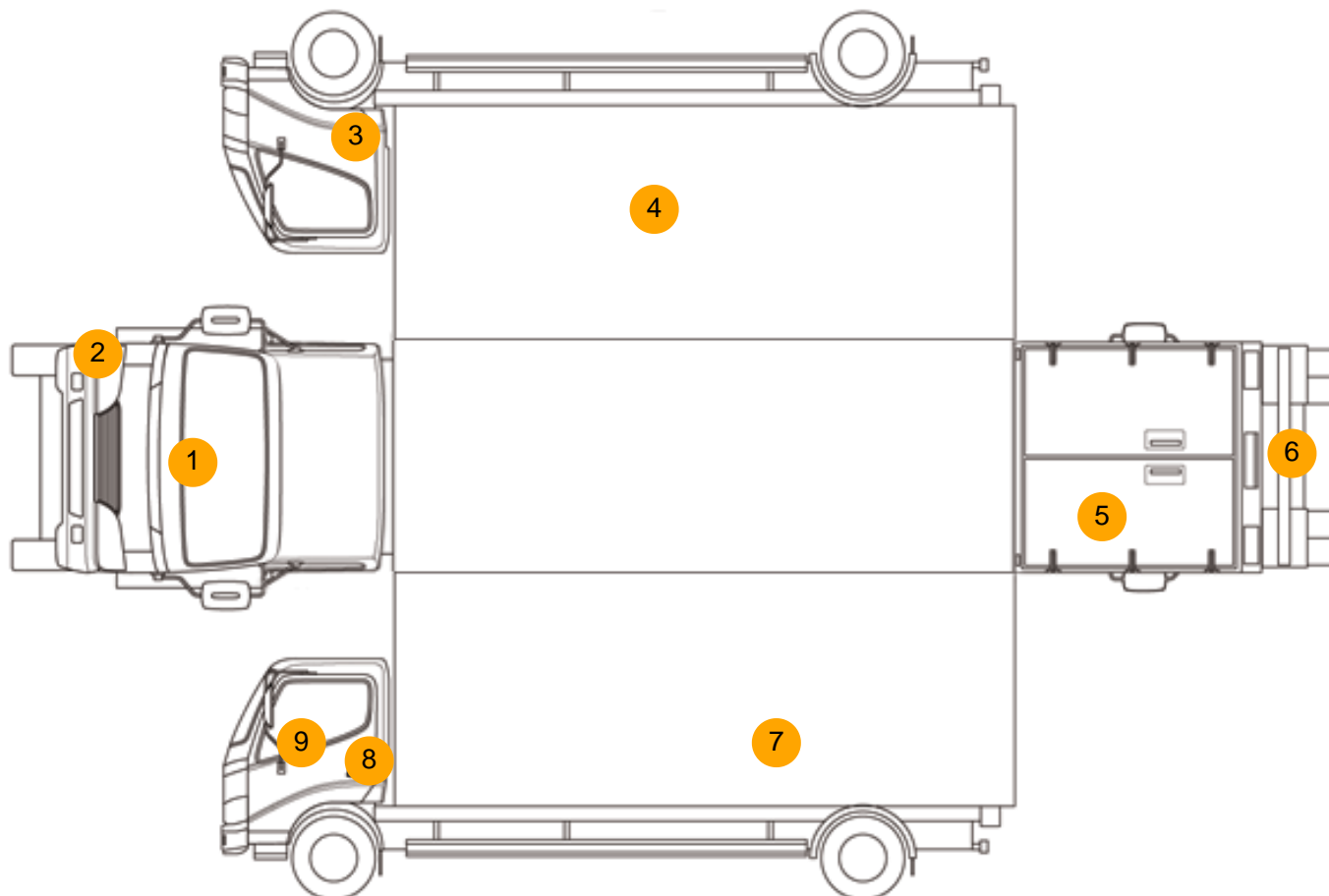
Photos







Condition Check



Damage Photos



1: Bonnet
Dented
With Paint Damage



2: Bumper Front
Dented
With Paint Damage



3: Wing osf
Rusted
Over 5mm



4: Qtr Panel osr
Rusted
Over 5mm



5: Screen Rear
Scratched
Over 30mm



6: Bumper Rear
Rusted
Over 5mm



7: Qtr Panel nsr
Rusted
Over 5mm



8: Wing nsf
Dented
With Paint Damage



9: Door Mirror Assy nsf
 Scratched (Painted)
 Over 25mm Thru Paint

Interior

Carpet Condition		OK	Upholstery Condition		OK
Seat Condition		OK	Odour		-
Engine Runs	OK		Gearbox 1st and Reverse Test	OK	
Brakes	OK		Clutch Slip Test from Static	OK	
Turbo Boosting	OK		Gearbox Static Gear Selection (engine running)	OK	
Parking Brake	OK		No Excessive Smoking	OK	
EML light illuminated	OK		Oil warning light illuminated	OK	
Airbag light illuminated	OK		DPF light illuminated	OK	
ABS light illuminated	OK		Service indicator light illuminated	OK	
Roof / sunroof	OK		Radio	OK	
Windows	OK		Steering	OK	