

VEHICLE INSPECTION REPORT

DG16DSV

Man TGS 26.320

Inspection

Serious Damage? No

Vehicle

VAT Plus VAT

V5 To Follow

Details

Reg. date	25/05/2016	VIN	WMA18SZZ2GP071649	Axle Combi	6x2
Year	2016	Body Style	Curtainside	Steering Combi	Rear-Lift Steer
Mileage	540,803 Km Warranted	MOT Due	30/04/2026	Rear Doors	Barn
Fuel Type	Diesel	Cab Type	DAY CAB		
Colour	BLUE	Gearbox	MANUAL		

WARNING LIGHT ON DASH FORKLIFT BRACKETS, SERVICE SCHEDULE LIST AVAILABLE

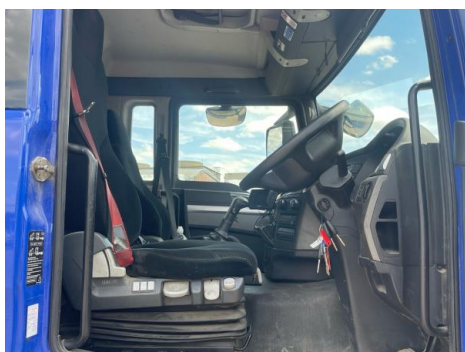
Tyres

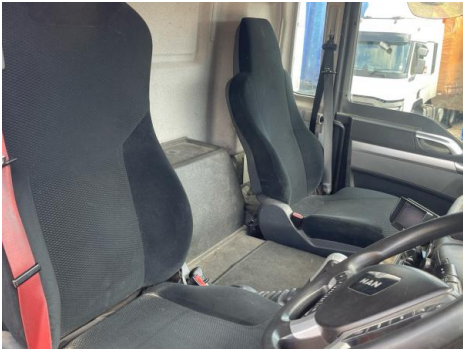
NSF	NSI1	NSI2	NSI3	NSI4
OSF	OSI1	OSI2	OSI3	OSI4
Spare	NSO1	NSO2	NSO3	NSO4
	OSO1	OSO2	OSO3	OSO4

Features

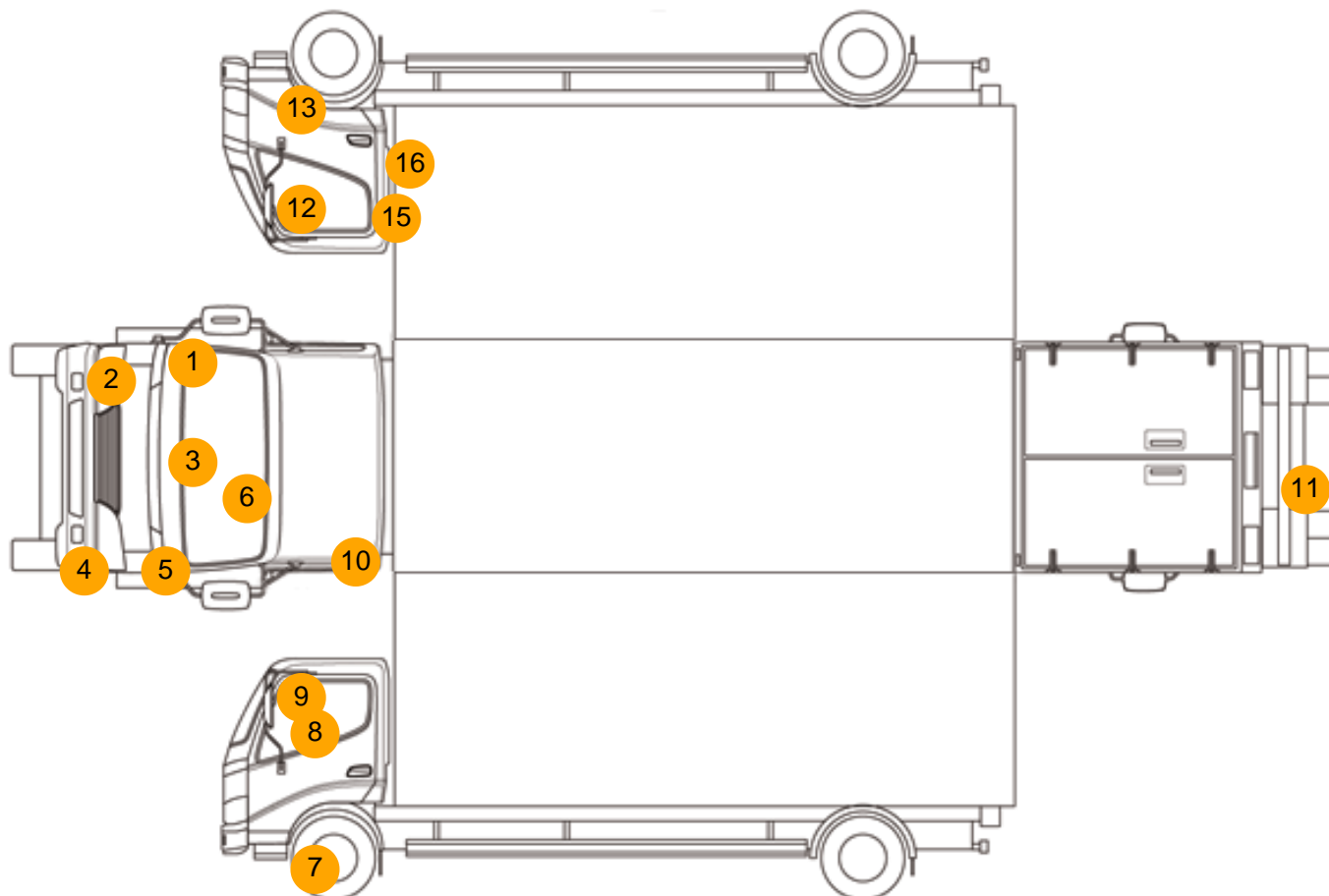
- Park assist camera

Photos





Condition Check



Damage Photos



1: Wing osf
Scratched
Over 25mm Thru Paint



2: Bumper Front
Scratched
Over 100mm Thru Paint



3: Bonnet
Chipped
Multiple Chips



4: Bumper Front
Scratched
Over 100mm Thru Paint



5: Wing nsf
Chipped
Multiple Chips



6: Screen Front
Chipped
UpTo 10mm



7: Other
N/A
N/A



8: Door Mirror Assy nsf
Scuffed (Unpainted)
Over 100mm



9: Door Mirror Assy nsf
Missing
Replace



10: Other
N/A
N/A



11: Bumper Rear
Rusted
Over 5mm



12: Door Mirror Assy osf
Scuffed (Unpainted)
Over 100mm



13: Other
N/A
N/A



14: Door Pad osf
Broken
Replace



15: Door Moulding osf
Broken
Replace

16: Door osf
Chipped
Edge Chip

Interior

Carpet Condition		Average	Upholstery Condition		Average
Seat Condition		Average	Odour		-
Engine Runs	OK		Gearbox 1st and Reverse Test	OK	
Brakes	OK		Clutch Slip Test from Static	OK	
Parking Brake	OK		Gearbox Static Gear Selection (engine running)	OK	
			No Excessive Smoking	OK	
EML light illuminated	OK		Oil warning light illuminated	OK	
Airbag light illuminated	OK		DPF light illuminated	OK	
ABS light illuminated	OK		Service indicator light illuminated	OK	