

# VEHICLE INSPECTION REPORT

**DG66ORY**

## Man TGS 26.360

### Inspection

Serious Damage? No

### Vehicle

VAT Plus VAT

V5 Present

### Details

Reg. date	27/10/2016	VIN	WMA18SZZ5GP073752	Axle Combi	6x2
Year	2016	Body Style	Curtainside	Steering Combi	Rear-Lift Steer
Mileage	407,440 Km Warranted	MOT Due	30/11/2025	Rear Suspension	Air
Fuel Type	Diesel	Cab Type	DAY CAB	Rear Doors	Barn
Colour	BLUE	Gearbox	MANUAL		

\*WARNING LIGHT ON DASH\* FORK LIFT BRACKET, SERVICE SCHEDULE LIST AVAILABLE

### Tyres

NSF	NSI1	NSI2	NSI3	NSI4
OSF	OSI1	OSI2	OSI3	OSI4
Spare	NSO1	NSO2	NSO3	NSO4
	OSO1	OSO2	OSO3	OSO4

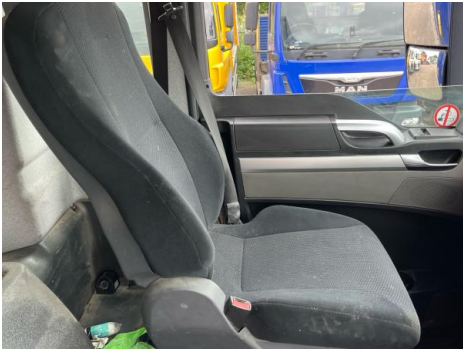
## Features

- Cruise control
- Radio/CD
- Front electric windows
- Cloth seat trim

## Photos



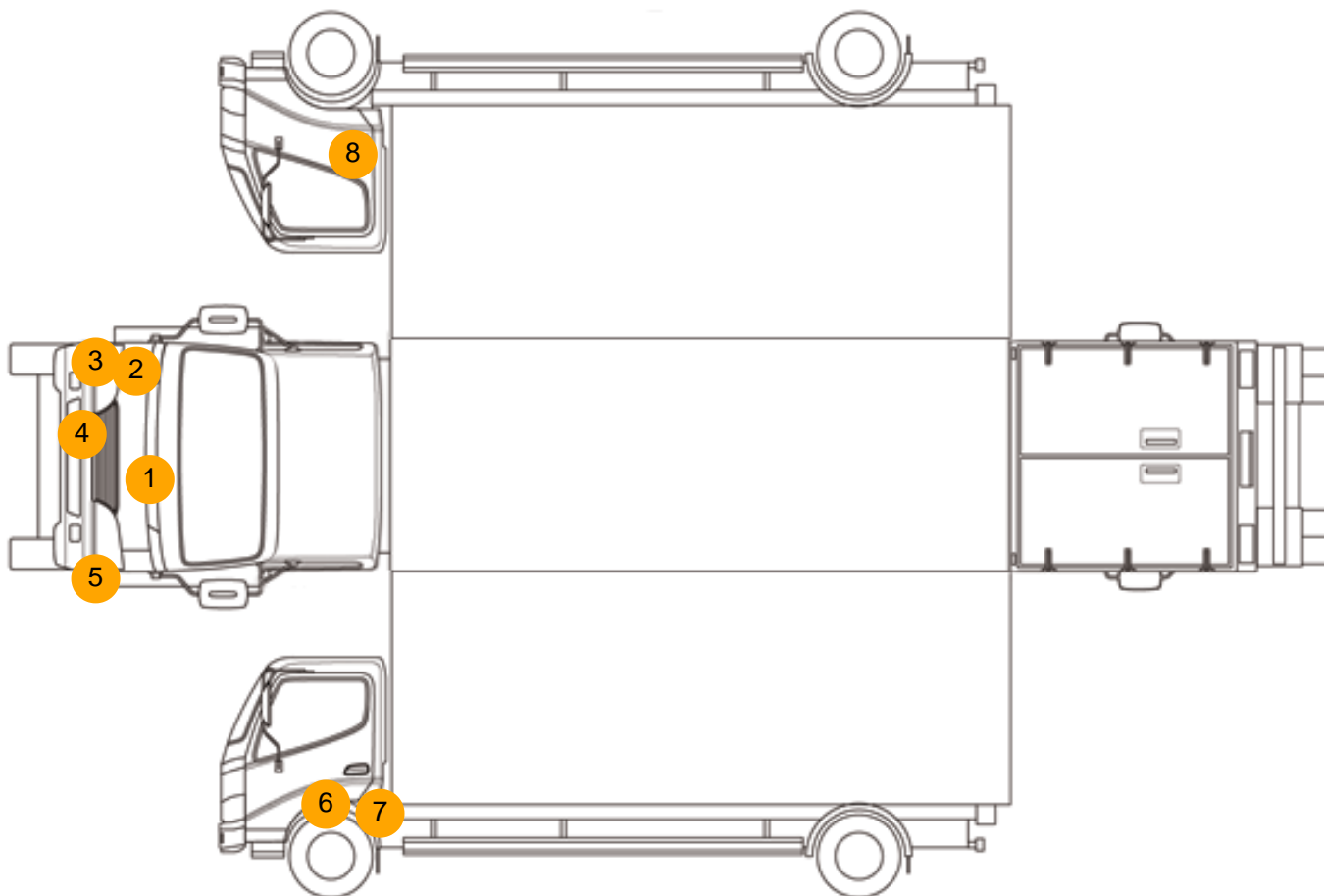








## Condition Check



## Damage Photos



1: Bonnet  
Chipped  
Multiple Chips



2: Panel Front  
Scratched  
Over 25mm Thru Paint





3: Bumper Front  
Scratched  
Over 100mm Thru Paint



4: Bumper Front  
Hole  
Over 25mm



5: Bumper Front  
Scratched  
Over 100mm Thru Paint



6: Door nsf  
Scratched  
Over 25mm Thru Paint



7: Door nsf  
Scratched  
Over 25mm Thru Paint



8: Wing osf  
Scratched  
Over 25mm Thru Paint

## Interior

Carpet Condition	OK	Upholstery Condition	OK
Seat Condition	OK	Odour	-
Engine Runs	OK	No Excessive Smoking	OK
EML light illuminated	OK	DPF light illuminated	OK
ABS light illuminated	OK		