

VEHICLE INSPECTION REPORT

C419360

NOTEBOOM MACHINERY-CARRIER

Inspection

Vehicle

VAT	Plus VAT
V5	N/A

Details

Reg. date	01/01/2016	Fuel Type		Body Style	Trailer
Year	2016	Colour	BLUE	Brakes	Drum
Mileage	TBC	VIN	XMR0SD000F0000612	Axle Combi	Quad

SAF AXLES, DOUBLE FLIP RAMPS, POSTS, SOCKETS, RAISE & LOWER VALVE, FERRY LASHING RINGS, TWIN REAR STEER, FRONT LIFT AXLE, WINCH

Tyres

NSF

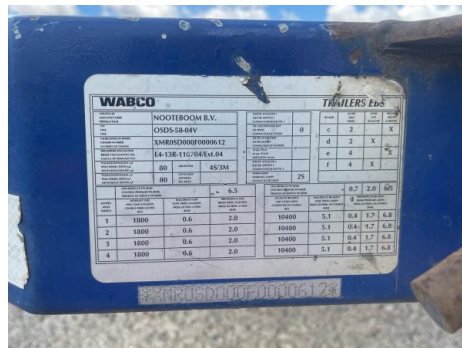
NSR

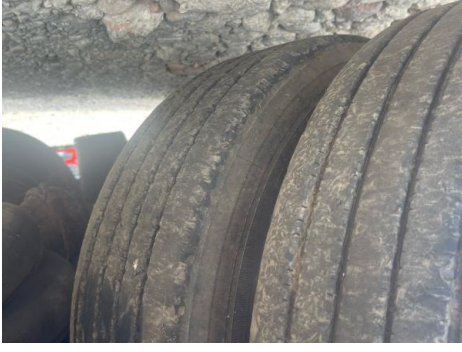
OSF

OSR

Spare

Photos







Function (See note 3)		Year of Original Registration		Year of Manufacture		2016			
(1) Description of Weights Applicable to vehicle	(2) Weights not to be exceeded in Gt. Britain	(3) GtC Maximum permitted weights (See note 8)	(4) Design Weights of heavy parts shown in column (2)	Length		Width			
Gross Weight (See notes 1 & 4)	41000		58000	13150		2540			
Train Weight (See note 2)				a. Coupling centre to vehicle mounted part (See note 5)		b. c.			
Max. Train Weight (See note 6)				a. Coupling centre to vehicle mounted part (See note 5)		18500 11700			
Axle Weights (When distributed from front to rear) (See note 1)	Axis 1	6000	10000	245/70-17.5		143/141 D			
	Axis 2	6000	10000	245/70-17.5		143/141 D			
	Axis 3	6000	10000	245/70-17.5		143/141 D			
	Axis 4	6000	10000	245/70-17.5		143/141 D			
Maximum Kinship Load (Same Train only)			18000	* 'S' indicates single wheels "D" indicates dual wheels					
						Tyre use conditions applicable to vehicle (See note 72)			
						2B			

NOTIFYABLE ALTERATIONS (Section 81 (1) (b) of the Road Traffic Act 1988:
If the vehicle or the equipment is to be notified to the Secretary of State (See notes 9 to 11)