

# VEHICLE INSPECTION REPORT

**LT68FYR**

## Fuso Canter 7C15

### Inspection

Serious Damage? No

### Vehicle

VAT Plus VAT

V5 Buyer To Apply

### Details

Reg. date	28/09/2018	Colour	WHITE	Cab Type	DAY CAB
Year	2018	VIN	TYAFEB71GRDZ09842	Gearbox	AUTOMATIC
Mileage	101,635 Km Warranted	Body Style	Tipper	Axle Combi	4x2
Fuel Type	Diesel	MOT Due	31/07/2025	Rear Suspension	Steel

SPENBOROUGH STEEL BODY TIPPING GEAR, WEIGH SYSTEM, WACKER PLATE LIFT ON N/S

### Tyres

NSF	NSI1	NSI2	NSI3	NSI4
OSF	OSI1	OSI2	OSI3	OSI4
Spare	NSO1	NSO2	NSO3	NSO4
	OSO1	OSO2	OSO3	OSO4

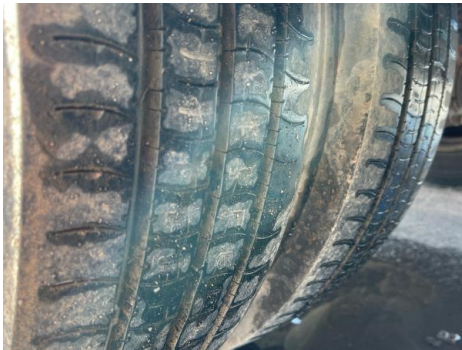
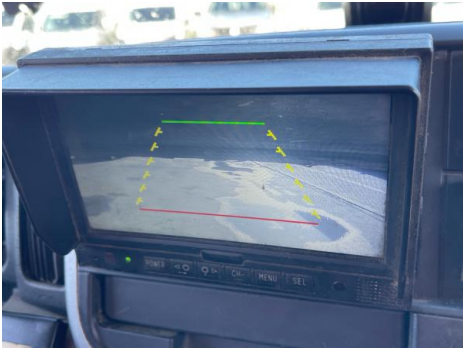
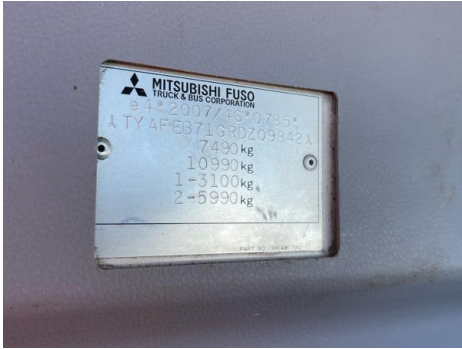
## Features

- Bluetooth connection
- Front electric windows
- Cloth seat trim
- Cruise control
- Drivers airbag
- Park assist camera
- Passenger airbag
- Digital radio
- Central locking

## Photos



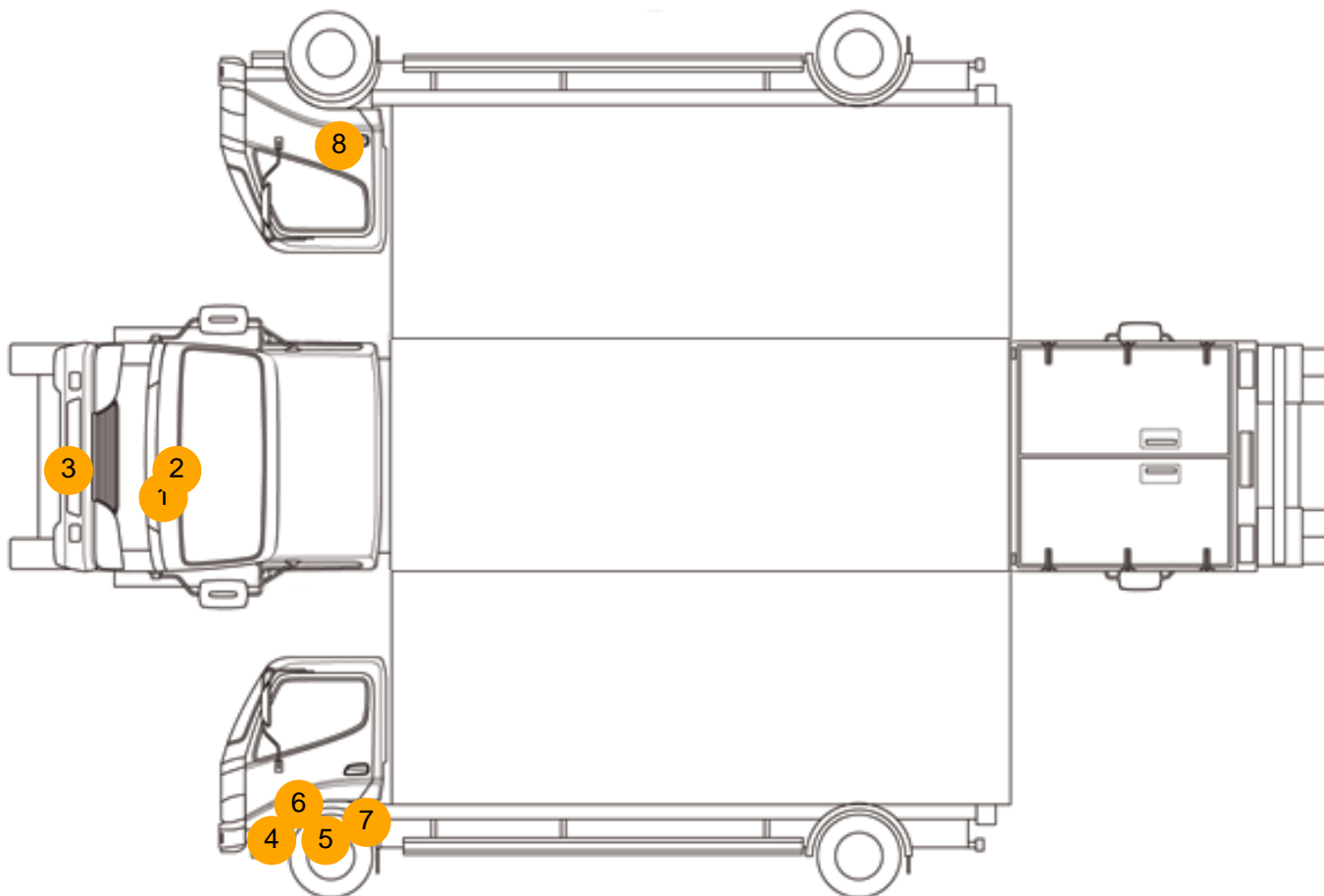








## Condition Check



## Damage Photos



1: Bonnet  
Dented  
Over 30mm



2: Bonnet  
Chipped  
Multiple Chips



3: Bumper Front  
Chipped  
Multiple Chips



4: Door nsf  
Dented  
With Paint Damage



5: Door nsf  
Dented  
With Paint Damage



6: Door nsf  
Scratched  
Over 25mm Thru Paint



7: Door nsf  
Dented  
With Paint Damage



8: Door osf  
Chipped  
Multiple Chips





9: Door Pad osf  
Soiled  
Heavy



10: Seat Base Cover osf  
Torn  
Over 3mm



11: Fascia Panel  
Broken  
Replace



12: Seat Base Cover nsf  
Soiled  
Heavy

**Interior**

<b>Carpet Condition</b>	OK	<b>Upholstery Condition</b>	Poor
<b>Seat Condition</b>	Poor	<b>Odour</b>	-
Engine Runs	OK	No Excessive Smoking	OK
EML light illuminated	OK	DPF light illuminated	OK
ABS light illuminated	OK		