

VEHICLE INSPECTION REPORT

LT68FYW

Fuso Canter 7C15

Inspection

Serious Damage? No

Vehicle

VAT Plus VAT

V5 Buyer To Apply

Details

Reg. date	27/09/2018	Colour	WHITE	Gearbox	AUTOMATIC
Year	2018	VIN	TYAFEB71GRDZ09843	Axle Combi	4x2
Mileage	82,772 Km Warranted	Body Style	Tipper	Rear Suspension	Steel
Fuel Type	Diesel	Cab Type	DAY CAB		

SPENBOROUGH STEEL BODY TIPPING GEAR, WEIGH SYSTEM, WACKER PLATE LIFT ON N/S

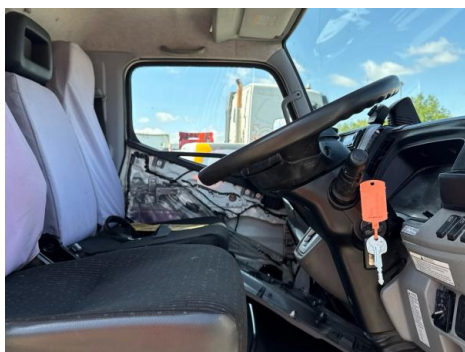
Tyres

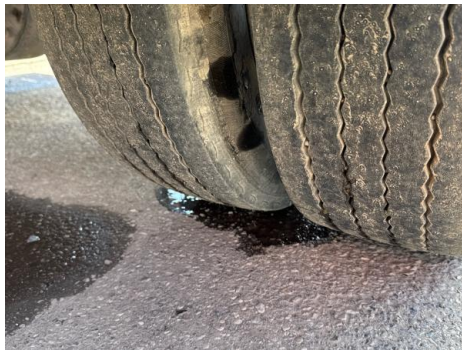
NSF	NSI1	NSI2	NSI3	NSI4
OSF	OSI1	OSI2	OSI3	OSI4
Spare	NSO1	NSO2	NSO3	NSO4
	OSO1	OSO2	OSO3	OSO4

Features

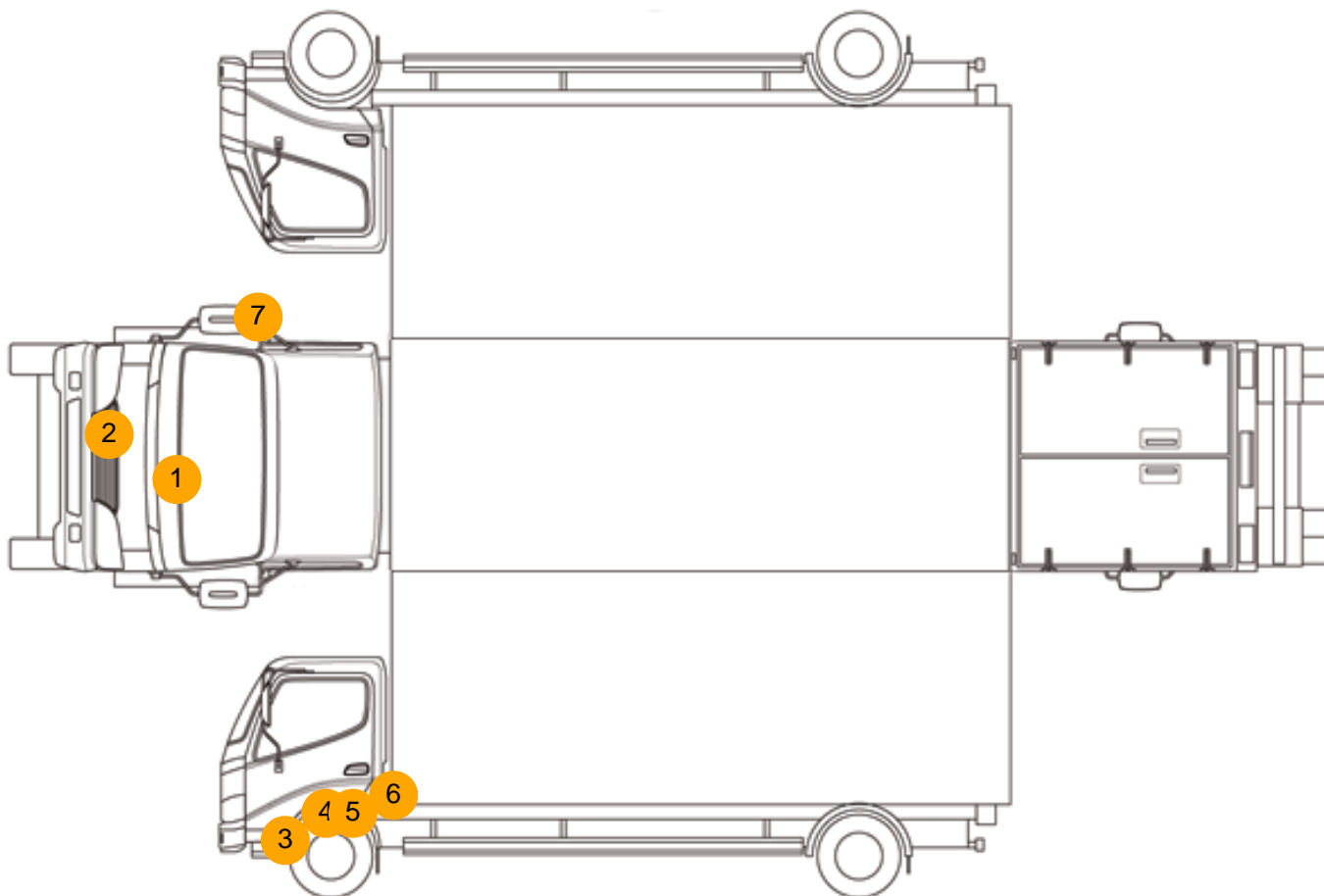
- Bluetooth connection
- Radio/CD
- Central locking
- Cruise control
- Front electric windows
- Cloth seat trim
- Park assist camera
- Drivers airbag
- Digital radio
- Passenger airbag

Photos





Condition Check



Damage Photos



1: Bonnet
Chipped
Multiple Chips



2: Bumper Front
Dented
With Paint Damage



3: Door nsf
Dented
With Paint Damage



4: Door nsf
Scratched
Over 25mm Thru Paint



5: Door nsf
Scratched
Over 25mm Thru Paint



6: Door nsf
Scratched
Over 25mm Thru Paint



7: Door Mirror Glass os
Broken
Replace



8: Door Pad osf
Soiled
Heavy



9: Door Pad nsf
Missing
Replace

Interior

Carpet Condition	OK	Upholstery Condition	Poor
Seat Condition	OK	Odour	-
Engine Runs	OK	No Excessive Smoking	OK
EML light illuminated	OK	DPF light illuminated	OK
ABS light illuminated	OK		