

# VEHICLE INSPECTION REPORT

**DG66UBT**

## Man TGS 26.360

### Inspection

Serious Damage? No

### Vehicle

VAT Plus VAT

V5 Present

### Details

Reg. date 30/01/2017

VIN WMA18SZZ8HM720843

Axle Combi 6x2

Year 2017

Body Style Dropside & Crane

Steering Combi Rear-Lift Steer

Mileage 146,307 Km Warranted

MOT Due 30/11/2025

Rear Suspension Steel

Fuel Type Diesel

Cab Type DAY CAB

Colour BLUE

Gearbox MANUAL

\*WARNING LIGHT ON DASH\* HMF 1420 K2 REMOTE CRANE (YEAR 2016), SURROUND CAMERA SYSTEM, SERVICE SCHEDULE LIST AVAILABLE

### Tyres

NSF NSI1 NSI2 NSI3 NSI4

OSF OSI1 OSI2 OSI3 OSI4

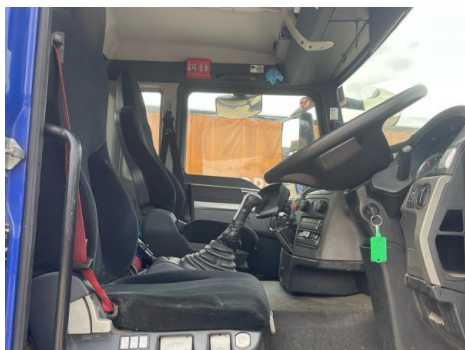
Spare NSO1 NSO2 NSO3 NSO4

OSO1 OSO2 OSO3 OSO4

## Features

- Park assist camera

## Photos

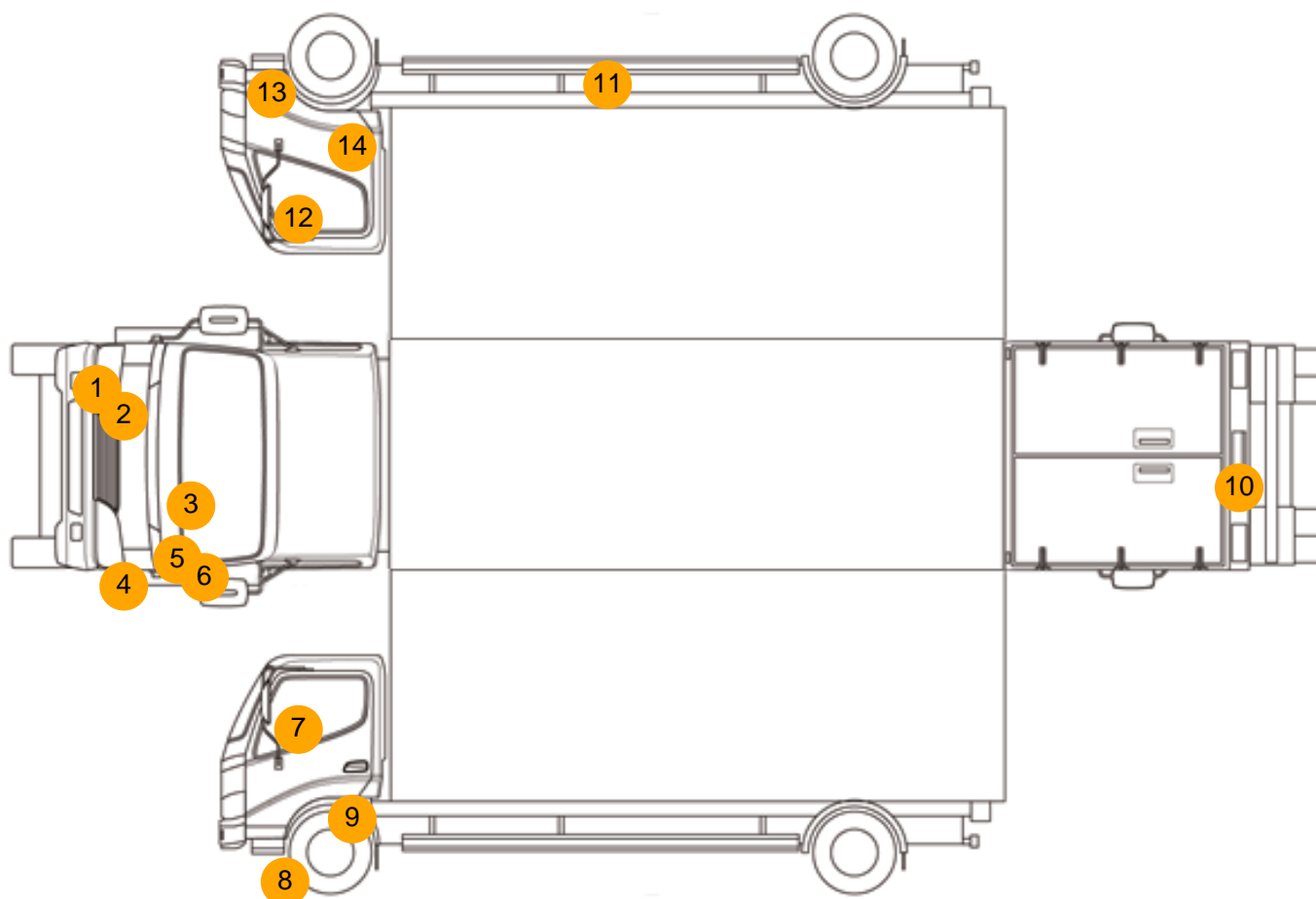








## Condition Check



## Damage Photos



1: Bumper Front Moulding  
Scuffed (Unpainted)  
Over 100mm



2: Fog Lamp Surround os  
Scuffed (Unpainted)  
UpTo 100mm



3: Bonnet  
Scratched  
Over 25mm Thru Paint



4: Bumper Front Moulding  
Scuffed (Unpainted)  
UpTo 100mm



5: Fog Lamp Surrounds  
Scuffed (Unpainted)  
UpTo 100mm



6: Wing nsf  
Scratched  
UpTo 25mm Thru Paint



7: Door Mirror Assy nsf  
Scuffed (Unpainted)  
UpTo 100mm



8: Other  
N/A  
N/A





9: Other  
N/A  
N/A



10: Bumper Rear  
Dented  
Between 10mm + 30mm



11: Other  
N/A  
N/A



12: Door Mirror Assy osf  
Scuffed (Unpainted)  
UpTo 100mm



13: Other  
N/A  
N/A



14: Other  
N/A  
N/A



15: Other  
N/A  
N/A

16: Seat Base Cover osf  
Burn  
Over 3mm

## Interior

Carpet Condition		Average	Upholstery Condition		Average
Seat Condition		Average	Odour		-
Engine Runs	OK		Gearbox 1st and Reverse Test	OK	
Brakes	OK		Clutch Slip Test from Static	OK	
Parking Brake	OK		Gearbox Static Gear Selection (engine running)	OK	
			No Excessive Smoking	OK	
EML light illuminated	Fault		Oil warning light illuminated	OK	
Airbag light illuminated	OK		DPF light illuminated	OK	
ABS light illuminated	OK		Service indicator light illuminated	OK	