

VEHICLE INSPECTION REPORT

DX70TBU

Daf LF 180

Inspection

Serious Damage? No

Vehicle

VAT Plus VAT

V5 Present

Details

Reg. date 21/09/2020

VIN XLRAEL1500L499647

Axle Combi 4x2

Year 2020

Body Style Curtainside

Rear Suspension Steel

Mileage 312,874 Km Warranted

MOT Due 31/10/2025

Rear Doors Barn

Fuel Type Diesel

Cab Type DAY CAB

Colour WHITE

Gearbox MANUAL

Tyres

NSF NSI1

NSI2

NSI3

NSI4

OSF OSI1

OSI2

OSI3

OSI4

Spare NSO1

NSO2

NSO3

NSO4

OSO1

OSO2

OSO3

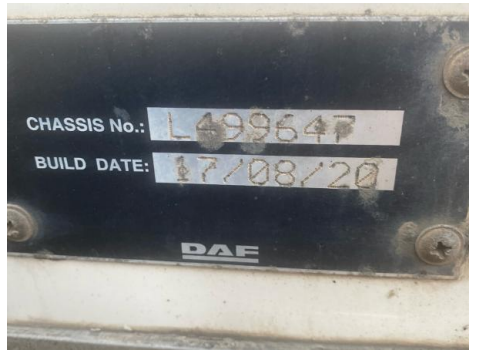
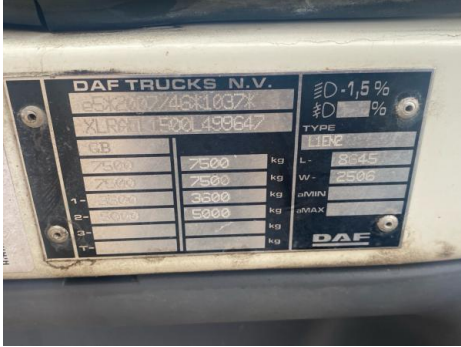
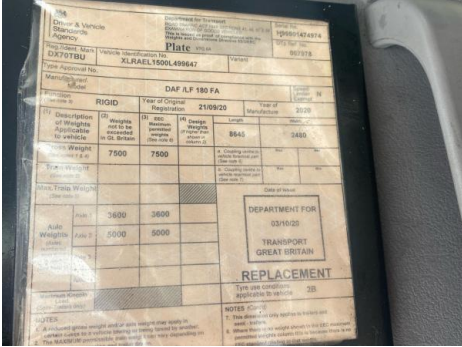
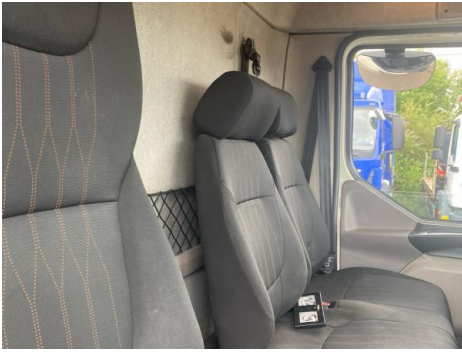
OSO4

Features

- Bluetooth connection
- Cruise control
- Digital radio
- Front electric windows
- Cloth seat trim

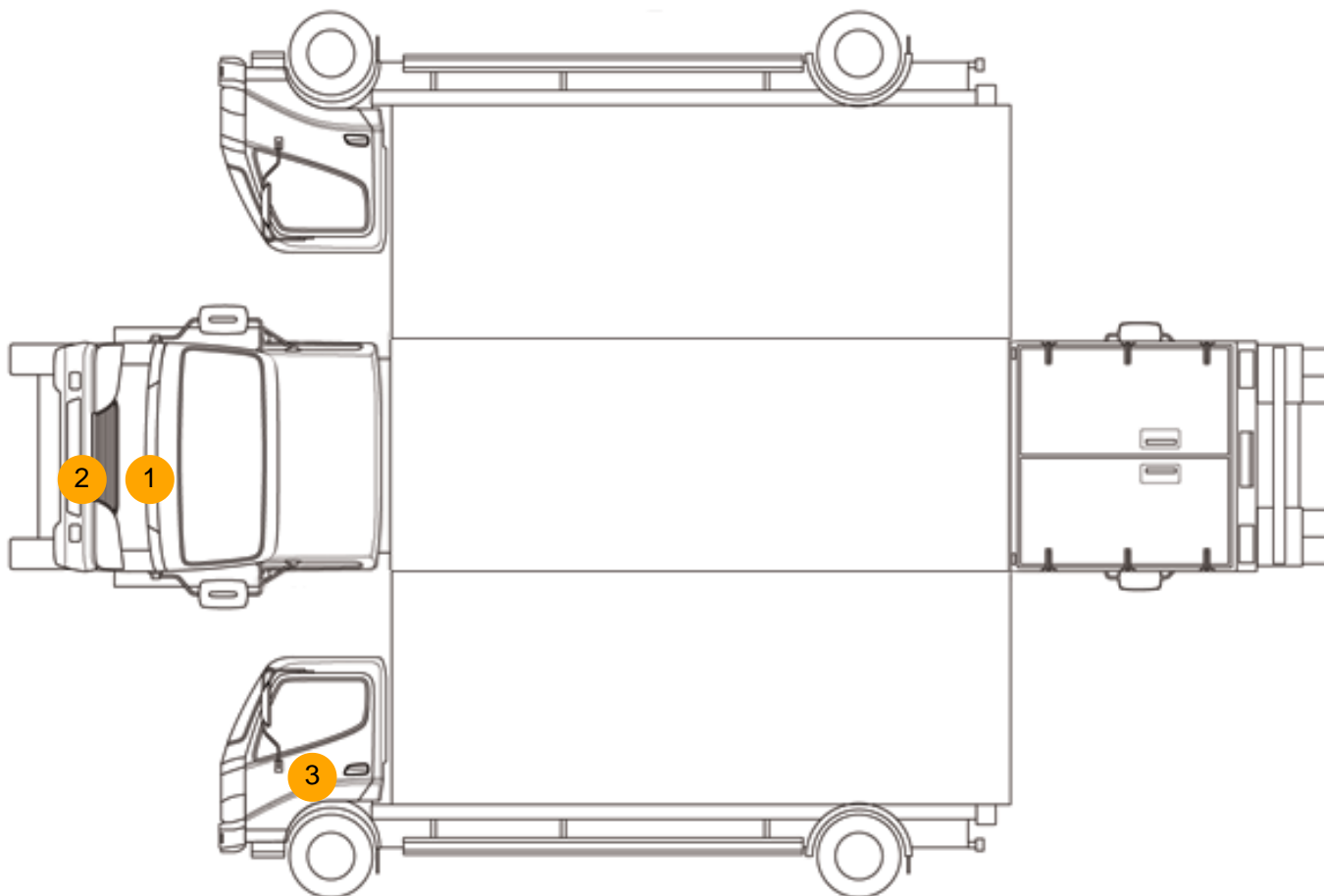
Photos







Condition Check



Damage Photos



1: Bonnet
Chipped
Multiple Chips



2: Bumper Front
Chipped
Multiple Chips



3: Door nsf
Dented
With Paint Damage



4: Door Pad osf
Soiled
Heavy



5: Seat Base Cover osf
Torn
Over 3mm



6: Seat Base Cover nsf
Soiled
Heavy



7: Door Pad nsf
Soiled
Heavy

Interior

Carpet Condition	OK	Upholstery Condition	Poor
Seat Condition	Poor	Odour	-
Engine Runs	OK	No Excessive Smoking	OK
EML light illuminated	OK	DPF light illuminated	OK
ABS light illuminated	OK		