

VEHICLE INSPECTION REPORT

FE22SGV

Vauxhall Combo Cargo 2300 1.5 TURBO D 100PS

Inspection

Serious Damage? No

Vehicle

VAT Plus VAT

V5 Buyer To Apply

Details

Reg. date 31/03/2022

Year 2022

Mileage 41,735 Miles
Warranted

Fuel Type Diesel

Colour WHITE

VIN W0VEFYHT2MJ928122

Body Style Panel Van

CAP Clean £7,400.00

CAP Average £6,850.00

CAP Below £5,875.00

Gearbox MANUAL

Gears 5

WARNING LIGHT ON DASH AD-BLUE, SIDE LOAD DOOR, E/ MIRRORS

Tyres

NSF

NSR

OSF

OSR

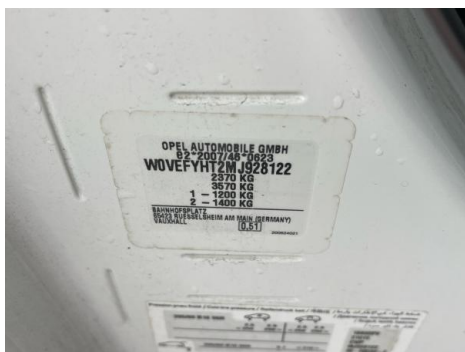
Spare

Features

- Bluetooth connection
- Digital radio
- Passenger airbag
- Cruise control
- Air conditioning
- Central locking
- Park assist camera
- Front electric windows
- Cloth seat trim
- Auxiliary input socket
- Drivers airbag

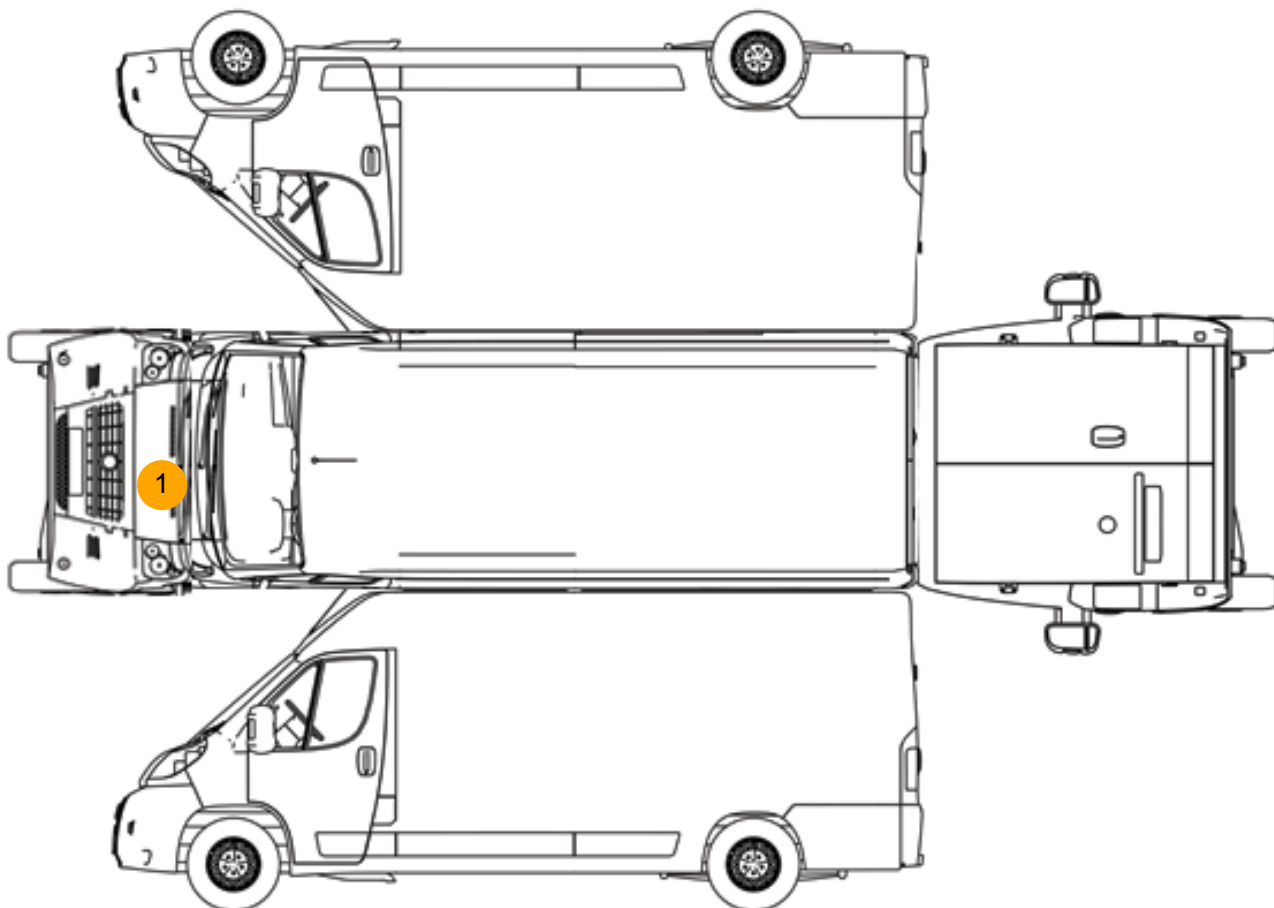
Photos







Condition Check



Damage Photos



1: Bonnet
Chipped
Multiple Chips



2: Seat Base Cover of
Soiled
Heavy



3: Fascia Panel
Scuffed
Over 25mm



4: Seat Base Cover nsf
Soiled
Heavy

Interior

| Carpet Condition | | Upholstery Condition | |
|-----------------------|----|-----------------------|----|
| Seat Condition | | Odour | |
| Engine Runs | OK | No Excessive Smoking | OK |
| EML light illuminated | OK | DPF light illuminated | OK |
| ABS light illuminated | OK | | |