

# VEHICLE INSPECTION REPORT

**DG66RZW**

## Man TGM 18.250

### Inspection

Serious Damage? No

### Vehicle

VAT Plus VAT

V5 To Follow

### Details

Reg. date	10/11/2016	Colour	BLUE	Cab Type	DAY CAB
Year	2016	VIN	WMAN08ZZ9HY350880	Gearbox	MANUAL
Mileage	230,429 Km Warranted	Body Style	Dropside & Crane	Axle Combi	4x2
Fuel Type	Diesel	MOT Due	30/11/2025	Rear Suspension	Steel

\*WARNING LIGHT ON DASH\* HMF 1430-LI REMOTE CRANE (YEAR 2016)

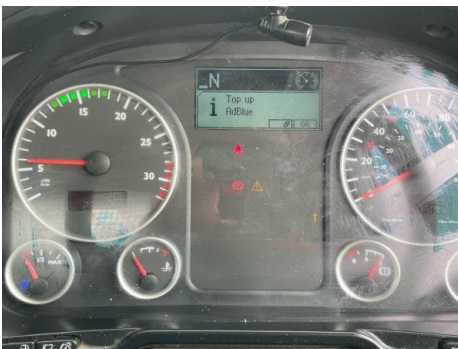
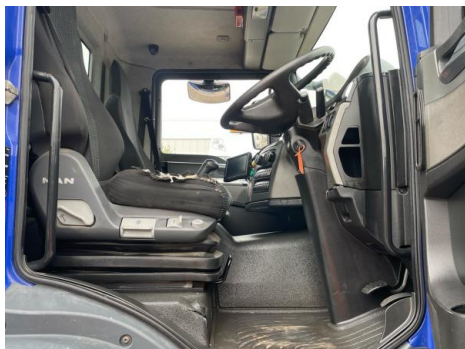
### Tyres

NSF	NSI1	NSI2	NSI3	NSI4
OSF	OSI1	OSI2	OSI3	OSI4
Spare	NSO1	NSO2	NSO3	NSO4
	OSO1	OSO2	OSO3	OSO4

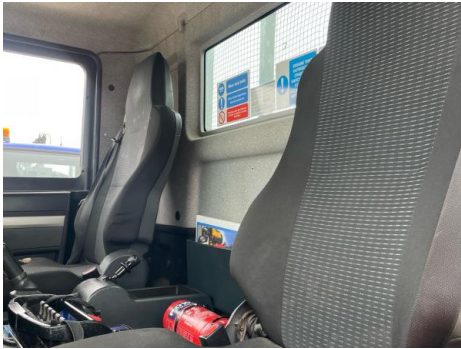
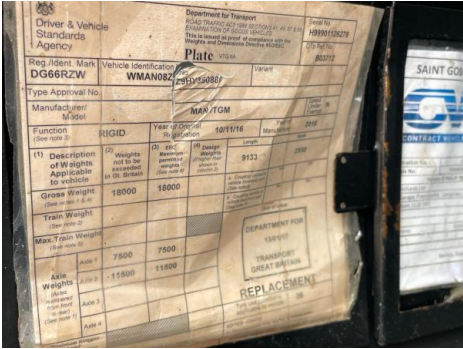
## Features

- Cruise control
- Park assist camera
- Radio/CD
- Front electric windows
- Cloth seat trim

## Photos



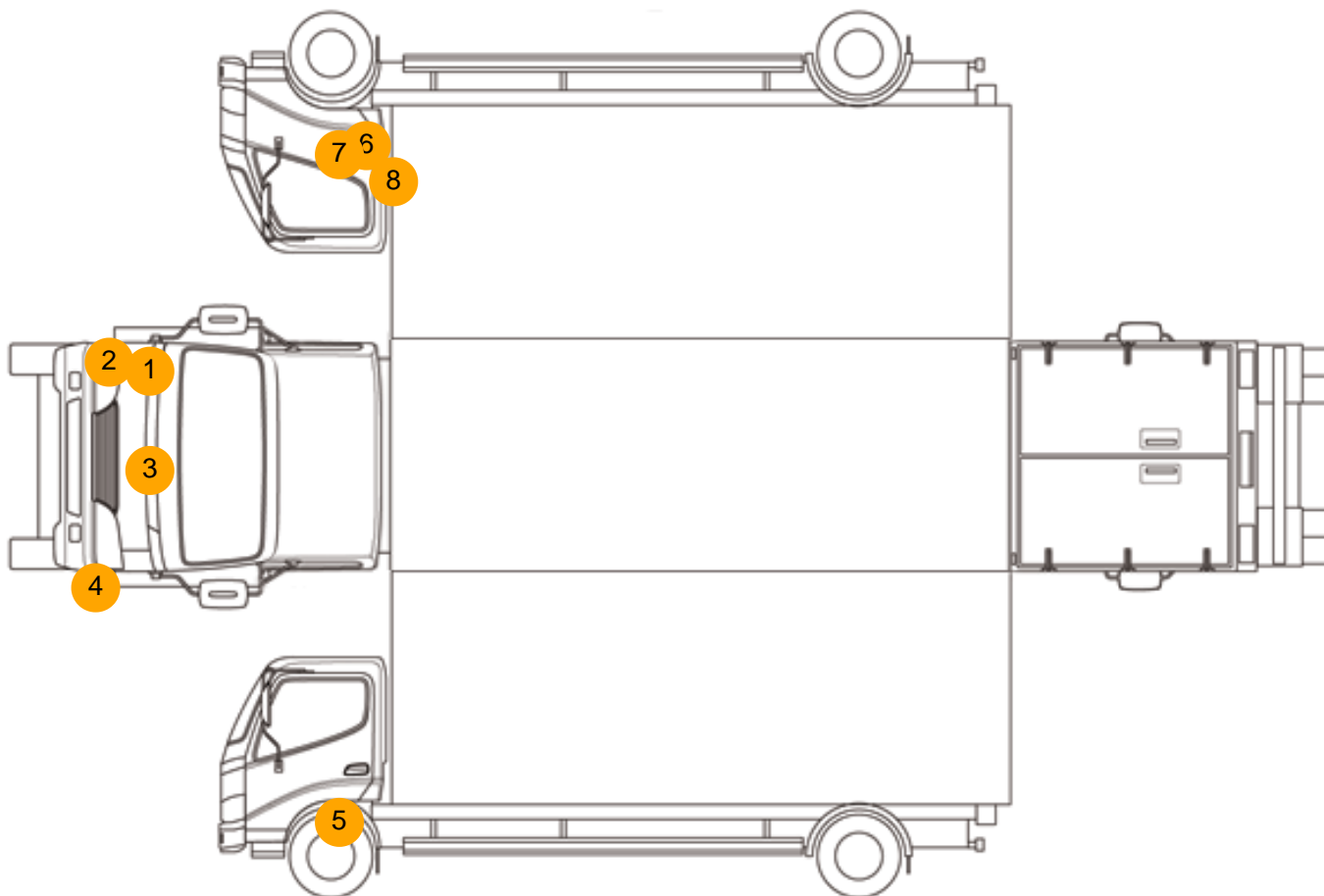








## Condition Check



## Damage Photos



1: Panel Front  
Scratched  
Over 25mm Thru Paint



2: Bumper Front  
Scratched  
Over 100mm Thru Paint





3: Bonnet  
Chipped  
Multiple Chips



4: Bumper Front  
Scratched  
Over 100mm Thru Paint



5: Wing nsf  
Chipped  
Multiple Chips



6: Wing osf  
Chipped  
Multiple Chips



7: Door osf  
Scratched  
Over 25mm Thru Paint



8: Door osf  
Scratched  
Over 25mm Thru Paint



9: Seat Base Cover osf  
Holed  
Over 3mm

Interior

Carpet Condition	OK	Upholstery Condition	OK
Seat Condition	Poor	Odour	-
Engine Runs	OK	No Excessive Smoking	OK
EML light illuminated	OK	DPF light illuminated	OK
ABS light illuminated	OK		