

VEHICLE INSPECTION REPORT

DK17LVG

Man TGM 18.250

Inspection

Serious Damage? No

Vehicle

VAT Plus VAT

V5 To Follow

Details

Reg. date 24/06/2017

Colour BLUE

Cab Type DAY CAB

Year 2017

VIN WMAN08ZZ9HY362625

Gearbox MANUAL

Mileage 204,408 Km Warranted

Body Style Dropside & Crane

Axle Combi 4x2

Fuel Type Diesel

MOT Due 30/06/2026

Rear Suspension Steel

HMF 1420-RC REMOTE CRANE (YEAR 2017)

Tyres

NSF NSI1

NSI2

NSI3

NSI4

OSF OSI1

OSI2

OSI3

OSI4

Spare NSO1

NSO2

NSO3

NSO4

OSO1

OSO2

OSO3

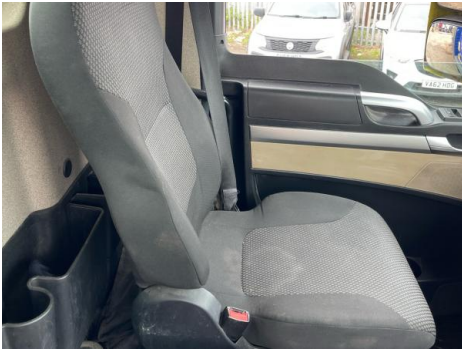
OSO4

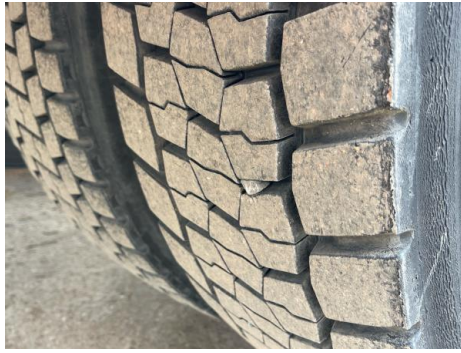
Features

- Bluetooth connection
- Cruise control
- Park assist camera
- Digital radio
- Front electric windows
- Cloth seat trim

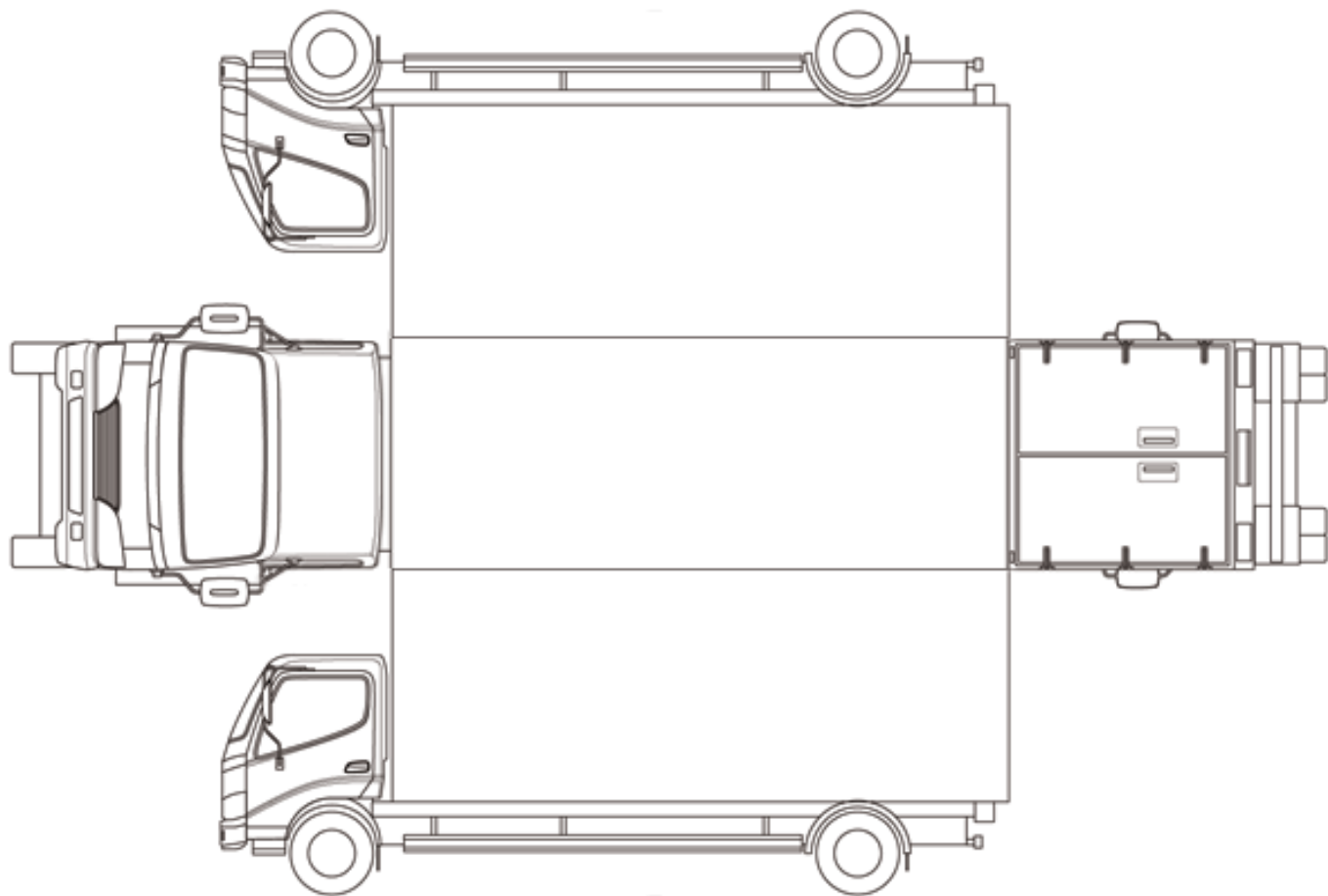
Photos







Condition Check



Damage Photos



1: Seat Base Cover osf
Holed
Over 3mm

Interior

Carpet Condition	OK	Upholstery Condition	OK
Seat Condition	Poor	Odour	-
Engine Runs	OK	No Excessive Smoking	OK

EML light illuminated	OK	DPF light illuminated	OK
ABS light illuminated	OK		