

VEHICLE INSPECTION REPORT

NV17JGX

Iveco Stralis 310

Inspection

Serious Damage? No

Vehicle

VAT Plus VAT

V5 Present

Details

Reg. date	30/06/2017	Colour	GREEN	Cab Type	DAY CAB
Year	2017	VIN	WJME62RN10C367905	Gearbox	AUTOMATIC
Mileage	274,023 Km Warranted	Body Style	Dropside & Crane	Axle Combi	6x2
Fuel Type	Diesel	MOT Due	30/09/2025	Rear Suspension	Air

WARNING LIGHT ON DASH ATLAS 129.3V-A11 REMOTE CRANE (YEAR 2016), REAR LIFT, SURROUND CAMERA SYSTEM

Tyres

NSF	NSI1	NSI2	NSI3	NSI4
OSF	OSI1	OSI2	OSI3	OSI4
Spare	NSO1	NSO2	NSO3	NSO4
	OSO1	OSO2	OSO3	OSO4

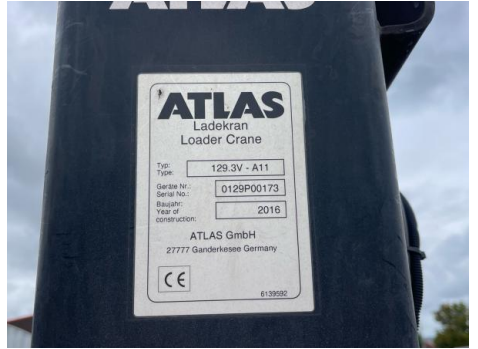
Features

- Bluetooth connection
- Radio/CD
- Cruise control
- Front electric windows
- Park assist camera
- Central locking
- Digital radio
- Cloth seat trim

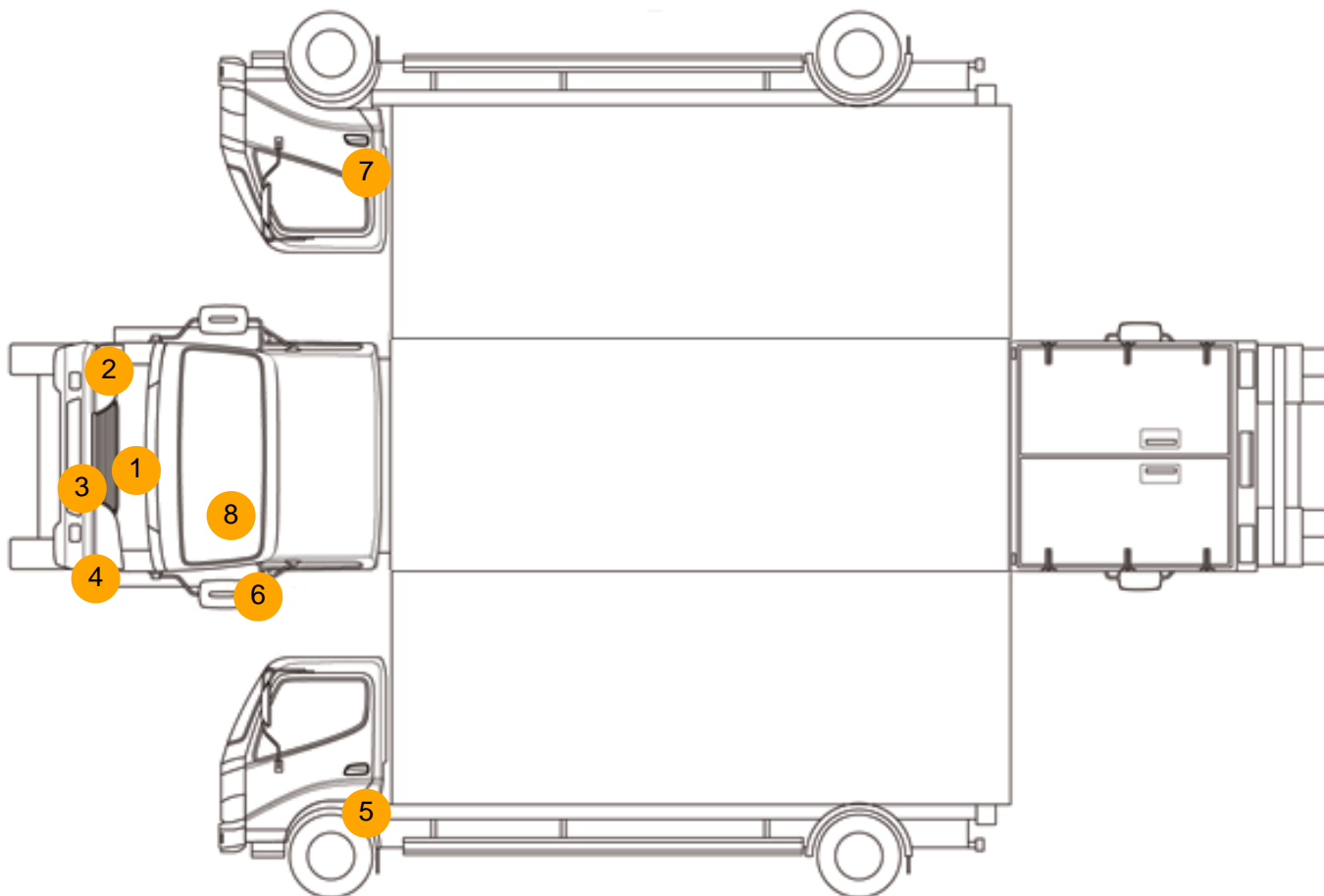
Photos







Condition Check



Damage Photos



1: Bonnet
Chipped
Multiple Chips



2: Bumper Front
Dented
With Paint Damage



3: Bumper Front
Chipped
Multiple Chips



4: Bumper Front
Dented
With Paint Damage



5: Wing nsf
Scratched
Over 25mm Thru Paint



6: Door Mirror Assy nsf
Broken
Replace



7: Door osf
Chipped
Multiple Chips



8: Screen Front
Chipped
Over 10mm



9: Seat Base Cover osf
Torn
Over 3mm



10: Seat Base Cover nsf
Soiled
Heavy



11: Dash Warning Lights
Displayed
No Action

Interior

Carpet Condition		OK	Upholstery Condition		OK
Seat Condition		Poor	Odour		-
Engine Runs		OK	No Excessive Smoking		OK
EML light illuminated		Fault	DPF light illuminated		OK
ABS light illuminated		OK			