

VEHICLE INSPECTION REPORT

HS68VEO

Ford Transit Connect 240 1.5 Tdci Base

Inspection

Serious Damage? No

Vehicle

VAT Plus VAT

V5 Buyer To Apply

Details

Reg. date 31/01/2019

Colour White

MOT Due 07/01/2026

Year 2019

VIN WF0SXXWPGSJG60254

Gearbox MANUAL

Mileage 143,448 Miles
Warranted

Body Style Panel Van LWB

Gears 5

Fuel Type Diesel

Keys 1

Doors 2

* LIVINGSTON * SINGLE SIDE DOOR, ELECTRIC WINDOWS , REMOTE CENTRAL LOCKING

Tyres

NSF

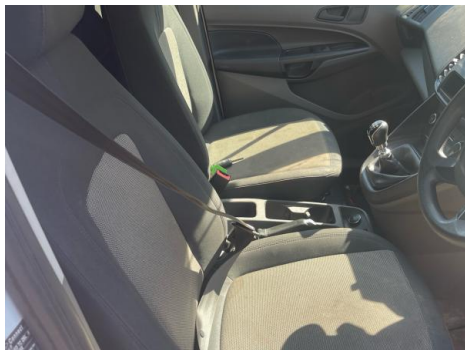
NSR

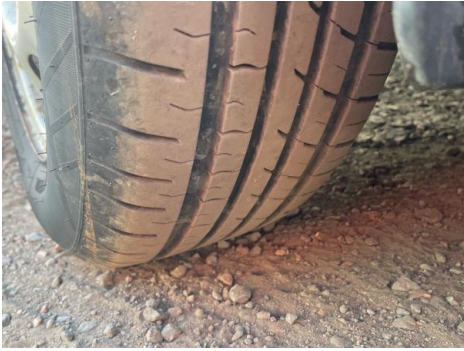
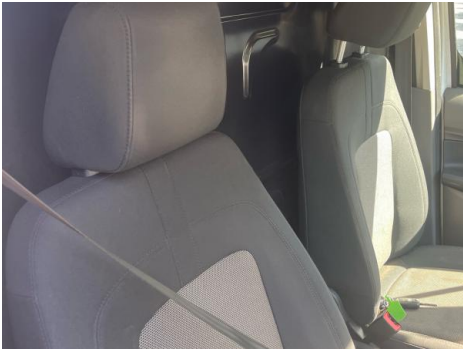
OSF

OSR

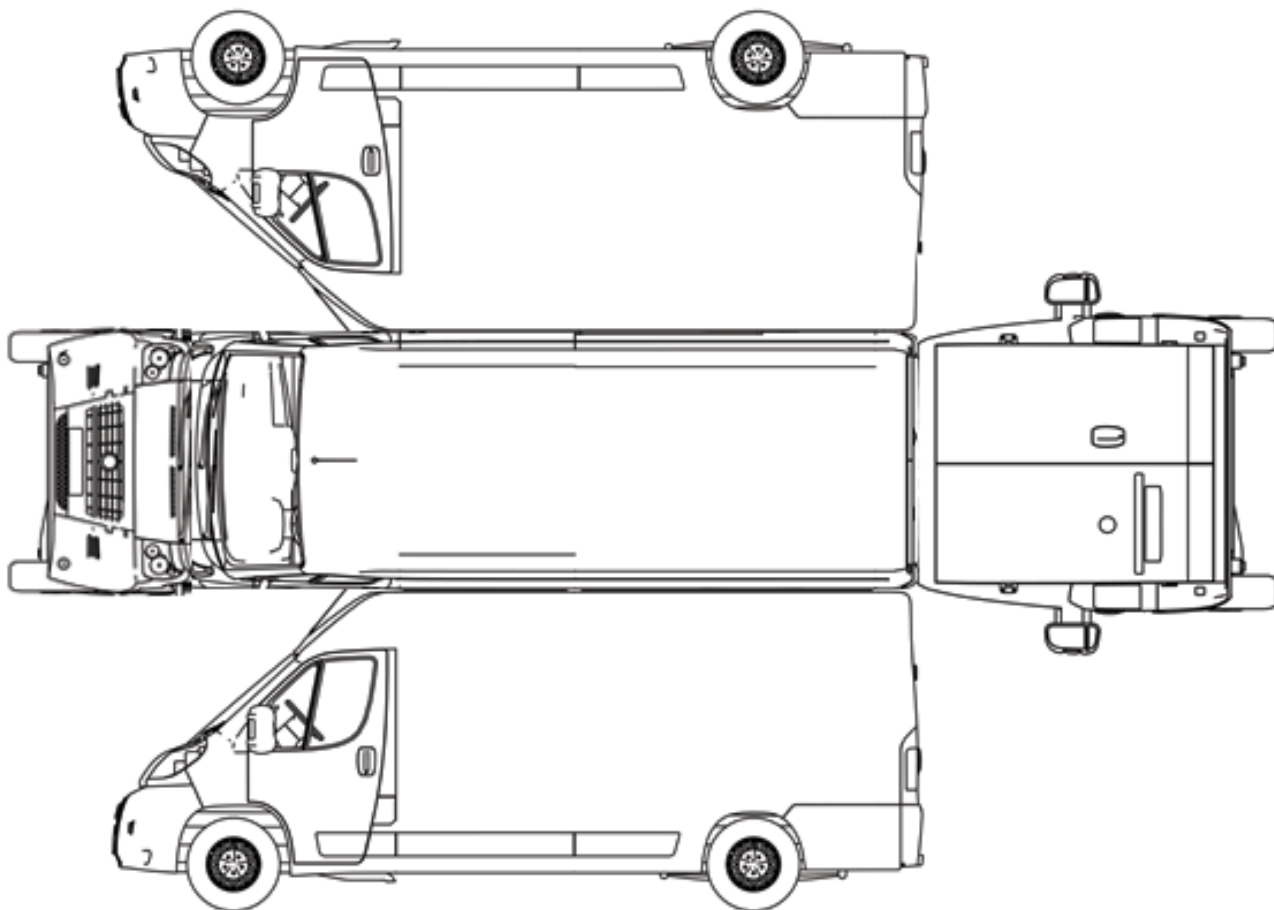
Spare

Photos





Condition Check



6

Damage Photos



1: Bonnet
Chipped
Multiple Chips



2: Door osf
Dented
Over 2 UpTo 10mm

No Image

No Image

3: Bumper Rear Moulding
Scuffed (Unpainted)
Over 100mm

4: Door nsr
Dented
Over 30mm



5: Door nsf
Chipped
1 To 5

6: Door nsf
Chipped
1 To 5

Interior

Carpet Condition Average
Seat Condition Average

Upholstery Condition Average
Odour No

Mechanical Inspection

Important Notice: Customer must satisfy themselves that the health check is as stated by 5pm day after sale and prior to leaving centre. If vehicle has been delivered we must be notified within two hours of arrival at your dealership.

EML light illuminated	Fault
Airbag light illuminated	Fault
ABS light illuminated	Fault