

VEHICLE INSPECTION REPORT

DG66RZF

Man TGM 18.250

Inspection

Serious Damage? No

Vehicle

VAT Plus VAT

V5 To Follow

Details

Reg. date 27/10/2016

Colour BLUE

Gearbox MANUAL

Year 2016

VIN WMAN08ZZ0GY349499

Axle Combi 4x2

Mileage 239,047 Km Warranted

Body Style Dropside & Crane

Rear Suspension Steel

Fuel Type DIESEL

Cab Type DAY CAB

HMF 1430 (YEAR 2016) REMOTE CRANE, SERVICE SCHEDULE LIST AVAILABLE

Tyres

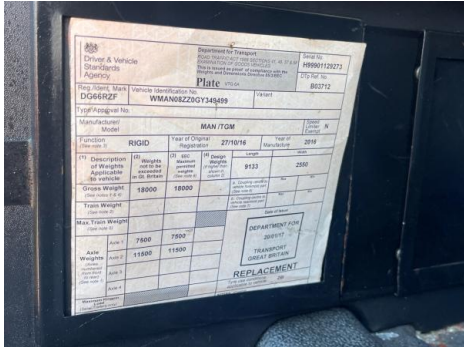
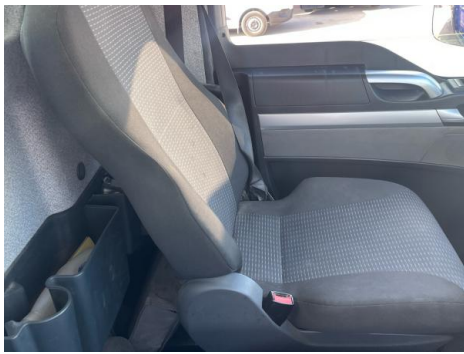
NSF	NSI1	NSI2	NSI3	NSI4
OSF	OSI1	OSI2	OSI3	OSI4
Spare	NSO1	NSO2	NSO3	NSO4
	OSO1	OSO2	OSO3	OSO4

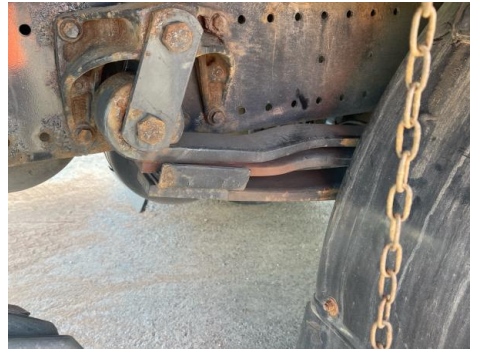
Features

- Cruise control
- Central locking
- Park assist camera
- Cloth seat trim
- Radio/CD
- Front electric windows

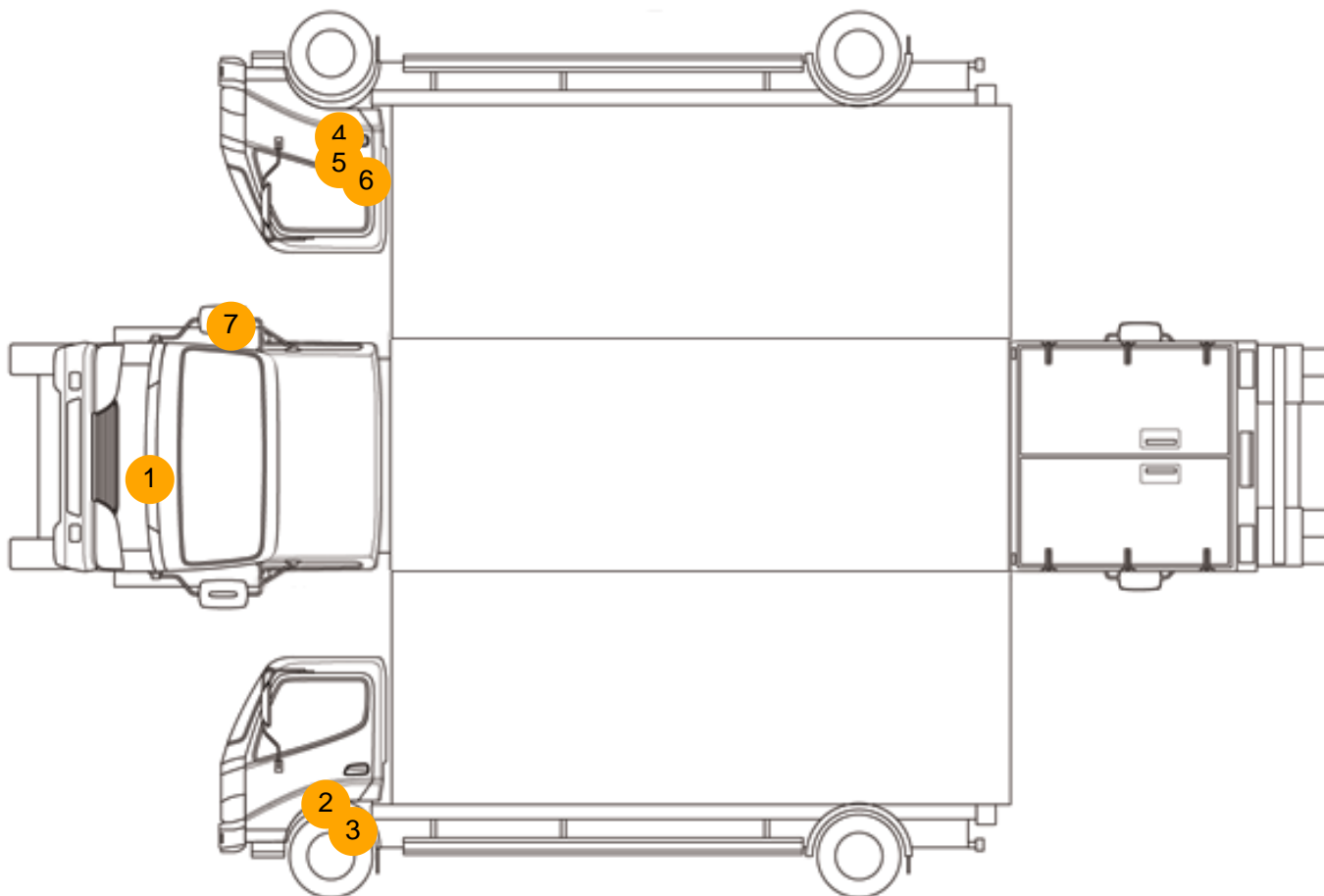
Photos







Condition Check



Damage Photos



1: Bonnet
Chipped
Multiple Chips



2: Door nsf
Scratched
Over 25mm Thru Paint



3: Wing nsf
Chipped
Multiple Chips



4: Wing osf
Chipped
Multiple Chips



5: Door osf
Scratched
Over 25mm Thru Paint



6: Door osf
Scratched
Over 25mm Thru Paint



7: Door Mirror Assy osf
Broken
Replace



8: Seat Base Cover osf
Torn
Over 3mm

Interior

Carpet Condition	OK	Upholstery Condition	OK
Seat Condition	Poor	Odour	-
Engine Runs	OK	No Excessive Smoking	OK
EML light illuminated	OK	DPF light illuminated	OK
ABS light illuminated	OK		