

VEHICLE INSPECTION REPORT

LN70ZGK

ISUZU N75 190

Inspection

Serious Damage? No

Vehicle

VAT Plus VAT

V5 To Follow

Details

Reg. date 04/12/2020

Colour WHITE

Cab Type DAY CAB

Year 2020

VIN JAANPR75MJ7100806

Gearbox AUTOMATIC

Mileage 32,987 Km Warranted

Body Style Recovery

Axle Combi 4x2

Fuel Type Diesel

MOT Due 28/02/2026

Rear Suspension Steel

MANUAL RAMPS, WINCH

Tyres

NSF	NSI1	NSI2	NSI3	NSI4
OSF	OSI1	OSI2	OSI3	OSI4
Spare	NSO1	NSO2	NSO3	NSO4
	OSO1	OSO2	OSO3	OSO4

Features

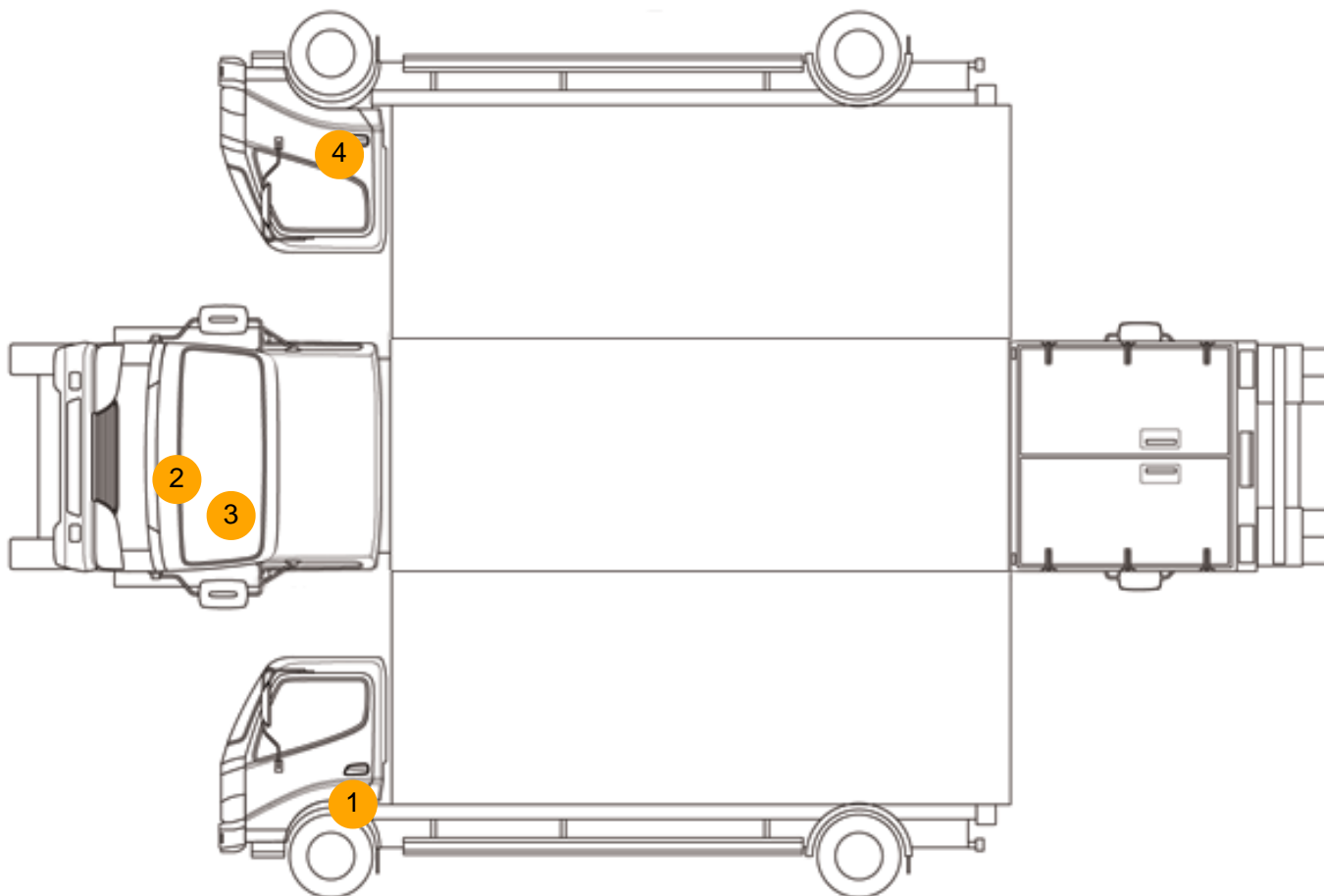
- Radio/CD
- Air conditioning
- Front electric windows
- Drivers airbag
- Passenger airbag
- Central locking
- Cloth seat trim

Photos

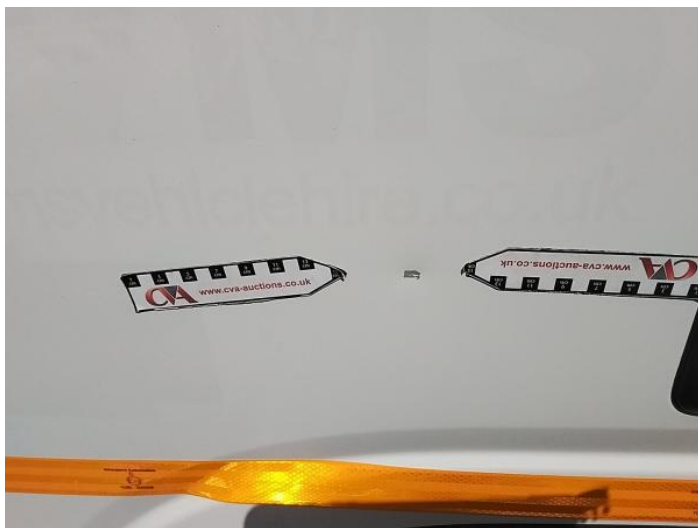




Condition Check



Damage Photos



1: Door nsf
Dented
With Paint Damage



2: Bonnet
Chipped
Multiple Chips



3: Screen Front
Chipped
Over 10mm



4: Door osf
Scratched
Over 25mm Thru Paint

Interior

Carpet Condition	OK	Upholstery Condition	OK
Seat Condition	OK	Odour	-
Engine Runs	OK	No Excessive Smoking	OK
EML light illuminated	OK	DPF light illuminated	OK
ABS light illuminated	OK		