

# VEHICLE INSPECTION REPORT

**YS19MTU**

## Ford Ranger WILDTRAK 200 3.2 TDCi

### Inspection

Serious Damage? No

### Vehicle

VAT Plus VAT  
V5 Buyer To Apply

### Details

Reg. date	01/03/2019	VIN	6FPPXXMJ2PJR44232	CAP Below	£7,600.00
Year	2019	Body Style	Pickup Double Cab	Gearbox	AUTOMATIC
Mileage	90,544 Miles Not Warranted	MOT Due	Expired	Gears	6
Fuel Type	DIESEL	CAP Clean	£10,850.00		
Colour	GREY	CAP Average	£9,475.00		

\*WARNING LIGHT ON DASH\* AD-BLUE, TWIN SIDE LOAD DOOR, TOW BAR, E/MIRRORS, HEATED WINDSCREEN

### Tyres

NSF

NSR

OSF

OSR

Spare

## Features

- Bluetooth connection
- Navigation system
- Mobile phone App interface
- Air conditioning
- Drivers airbag
- Cruise control
- Park assist camera
- Radio/CD
- Front electric windows
- Passenger airbag
- Front parking sensor
- Rear parking sensor
- Radio/CD Multichanger
- Rear electric windows
- Central locking
- Heated front seat
- Digital radio
- LED headlights
- Metallic Paint
- Partial leather seat trim

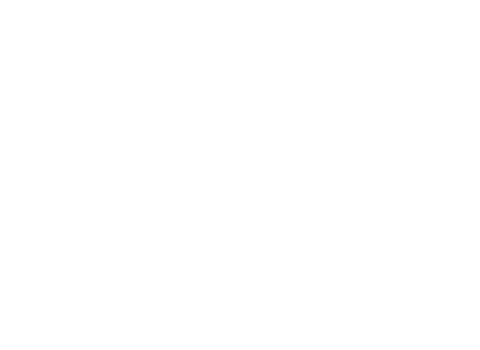
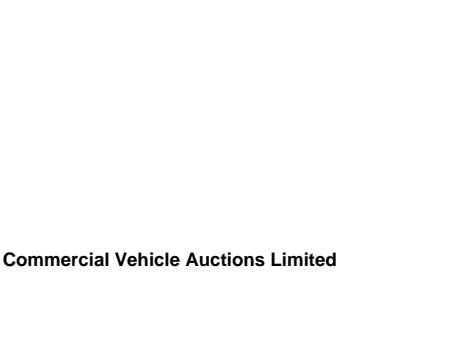
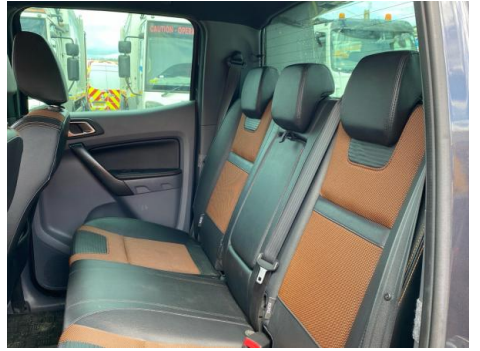
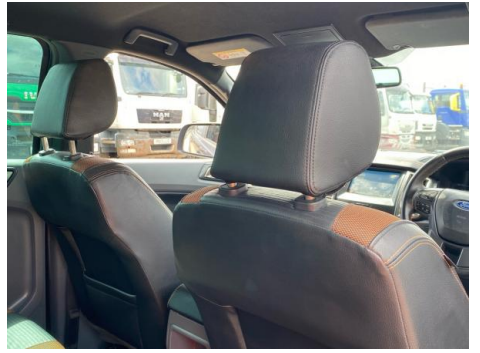
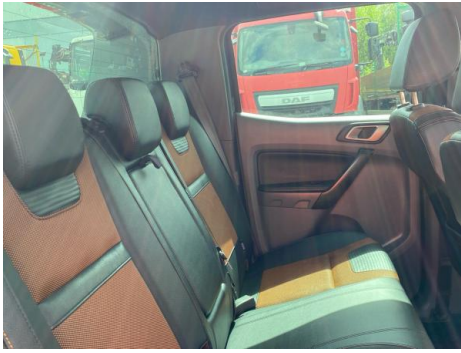
## Photos







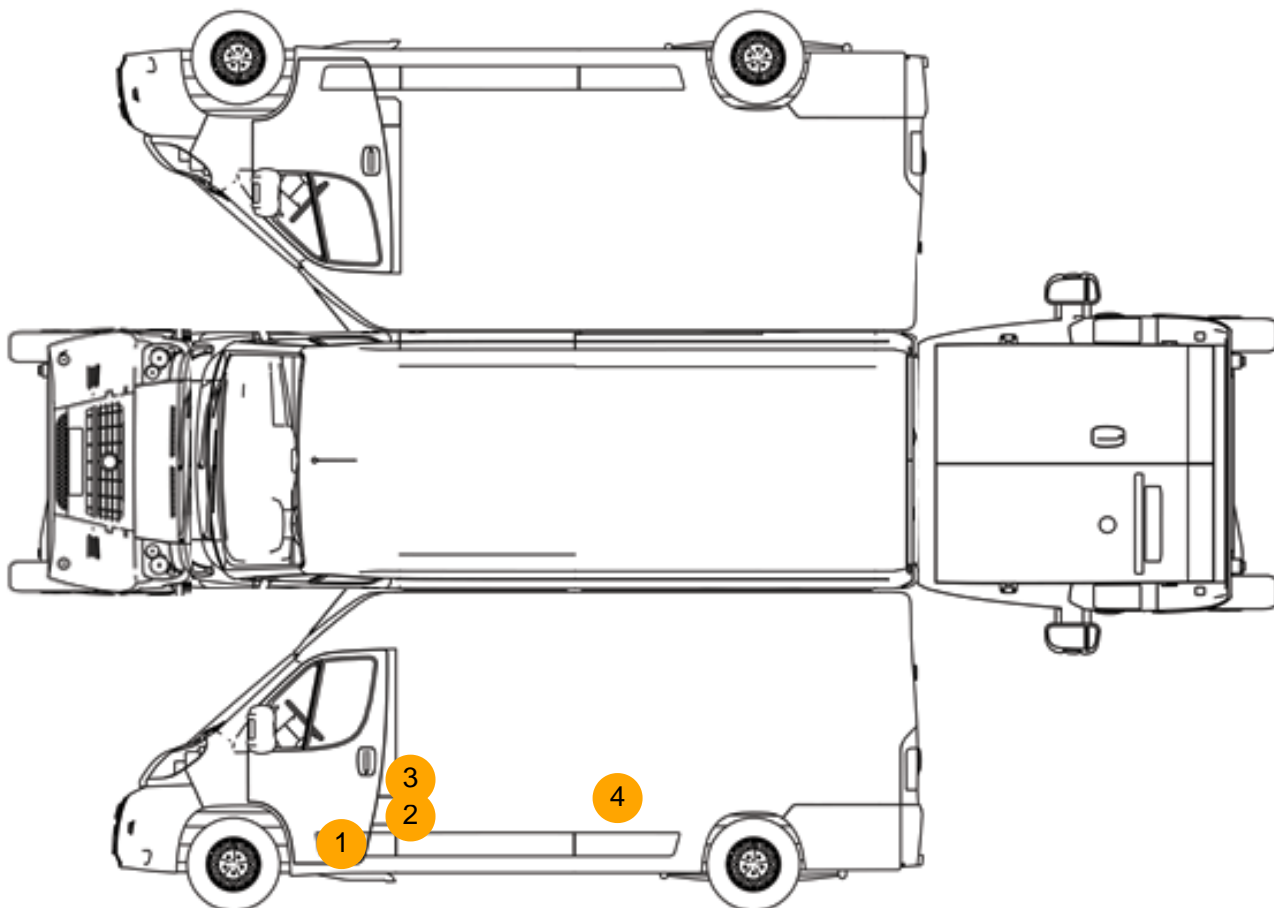








## Condition Check



## Damage Photos



1: Door nsf  
Dented  
With Paint Damage



2: Door nsf  
Chipped  
Edge Chip



3: Door nsf  
Chipped  
Edge Chip

4: Door nsr  
Chipped  
Over 5mm

## Interior

**Carpet Condition** OK  
**Seat Condition** OK

**Upholstery Condition** OK  
**Odour** No

Engine Runs	OK	Gearbox 1st and Reverse Test	OK
Brakes	OK	Clutch Slip Test from Static	OK
Turbo Boosting	OK	Gearbox Static Gear Selection (engine running)	OK
Parking Brake	OK	No Excessive Smoking	OK
EML light illuminated	OK	Oil warning light illuminated	Fault
Airbag light illuminated	OK	DPF light illuminated	OK
ABS light illuminated	OK	Service indicator light illuminated	OK
Windows	OK	Radio	OK
Sat nav	OK	Steering	OK