

VEHICLE INSPECTION REPORT

PO13EEH

DAF LF 45.140

Inspection

Serious Damage? No

Vehicle

VAT Plus VAT

V5 Present

Details

Reg. date	09/04/2013	VIN	XLRAE45FF0L425390	Gears	5
Year	2013	Body Style	Box Van	Doors	2
Mileage	745,451 Km Warranted	Keys	1	Axle Combi	4x2
Fuel Type	Diesel	MOT Due	28/02/2026	Steering Combi	Steer
Colour	RED	Gearbox	MANUAL	Tail Lift	Cantilever

* COLLECTED AS NON RUNNER - MECHANICAL WRITE OFF GEARBOX AND CLUTCH , WARNING LIGHT ON DASH*

Tyres

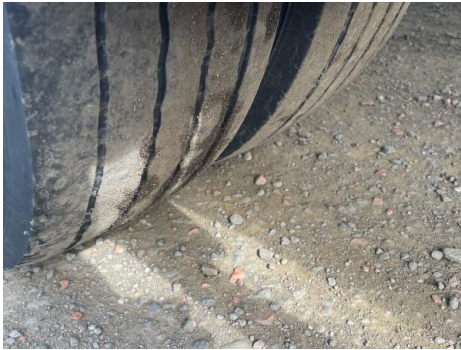
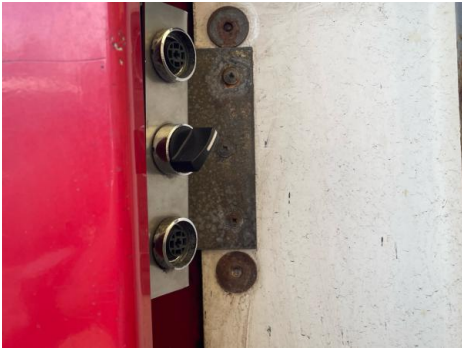
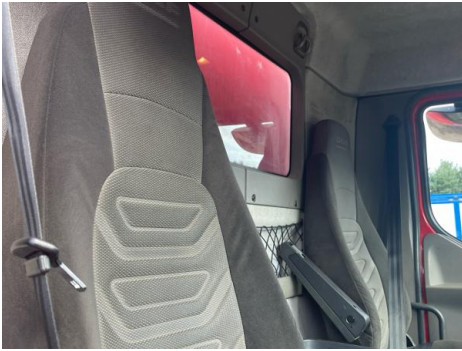
NSF	NSI1	NSI2	NSI3	NSI4
OSF	OSI1	OSI2	OSI3	OSI4
Spare	NSO1	NSO2	NSO3	NSO4
	OSO1	OSO2	OSO3	OSO4

Features

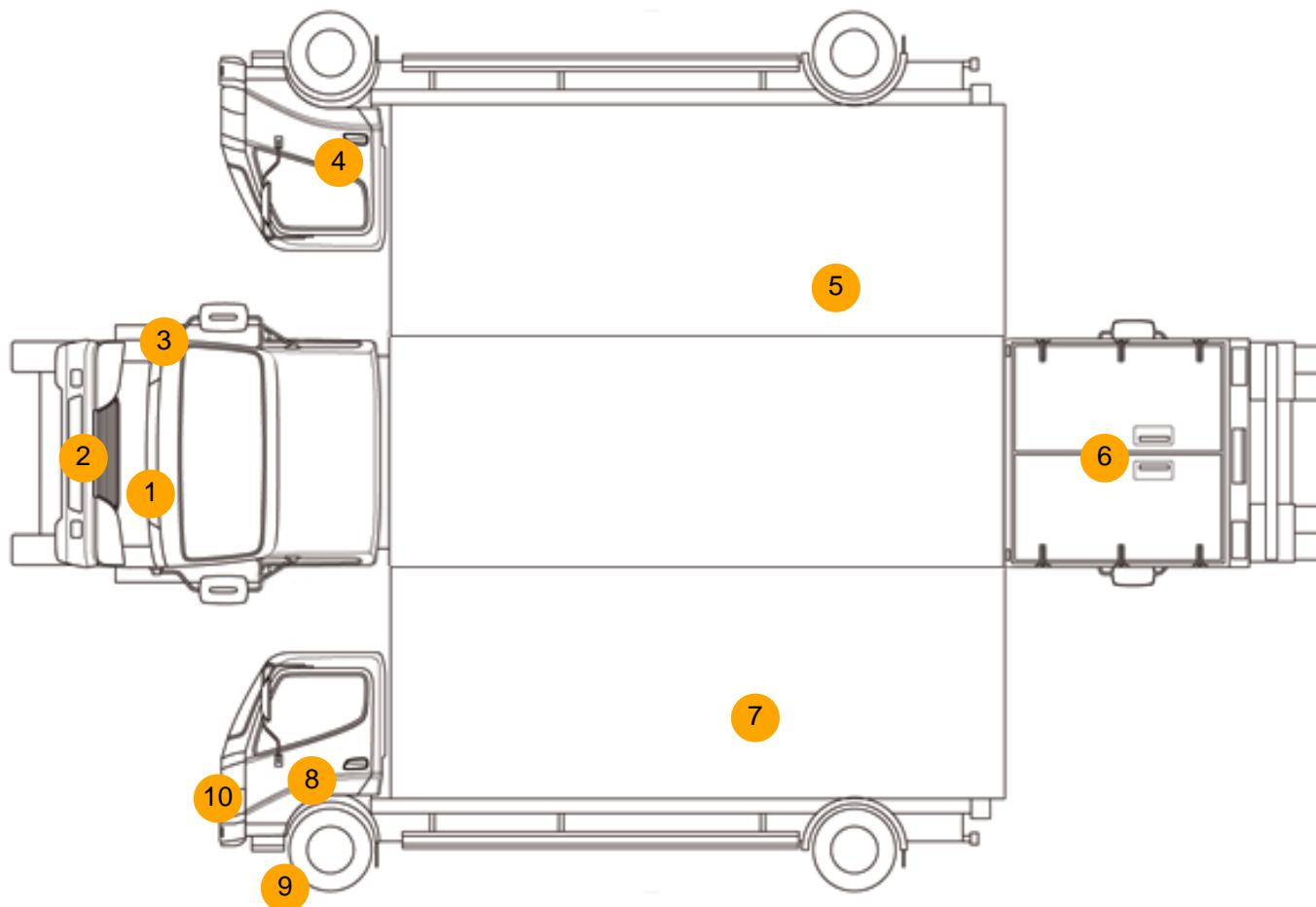
- Radio/CD
- Front electric windows
- Central locking
- Cloth seat trim

Photos





Condition Check



Damage Photos



1: Bonnet
Chipped
Multiple Chips



2: Bumper Front
Rusted
Over 5mm



3: Wing nsf
Cracked
Replace



4: Door osf
Dented
With Paint Damage



5: Qtr Panel osr
Rusted
Over 5mm



6: Tailgate
Rusted
Over 5mm



7: Qtr Panel nsr
Rusted
Over 5mm



8: Door nsf
Dented
Over 30mm



9: Door Moulding nsf
Scuffed (Unpainted)
Over 100mm

10: Wing nsf
Scratched
Over 25mm Thru Paint

Interior

Carpet Condition -
Seat Condition -

Upholstery Condition -
Odour -

Engine Runs	OK	Gearbox 1st and Reverse Test	OK
Brakes	OK	Clutch Slip Test from Static	OK
Turbo Boosting	OK	Gearbox Static Gear Selection (engine running)	OK
		No Excessive Smoking	OK
EML light illuminated	OK	Oil warning light illuminated	OK
Airbag light illuminated	OK	DPF light illuminated	OK
ABS light illuminated	Fault	Service indicator light illuminated	OK
Windows	OK	Radio	OK
		Steering	OK