

# VEHICLE INSPECTION REPORT

**DE69MRU**

## Isuzu N75 190

### Inspection

Serious Damage? No

### Vehicle

VAT Plus VAT

V5 Present

### Details

Reg. date 09/10/2019

VIN JAANPR75HJ7103800

Doors 2

Year 2019

Body Style Flatbed

Axle Combi 4x2

Mileage 244,759 Km Warranted

Keys 1

Steering Combi Steer

Fuel Type Diesel

MOT Due Expired

Rear Suspension Steel

Colour WHITE

Gearbox AUTOMATIC

### Tyres

NSF NSI1

NSI2

NSI3

NSI4

OSF OSI1

OSI2

OSI3

OSI4

Spare NSO1

NSO2

NSO3

NSO4

OSO1

OSO2

OSO3

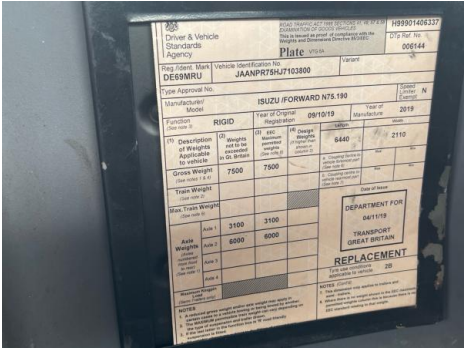
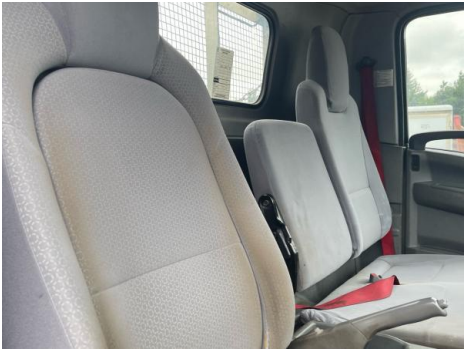
OSO4

## Features

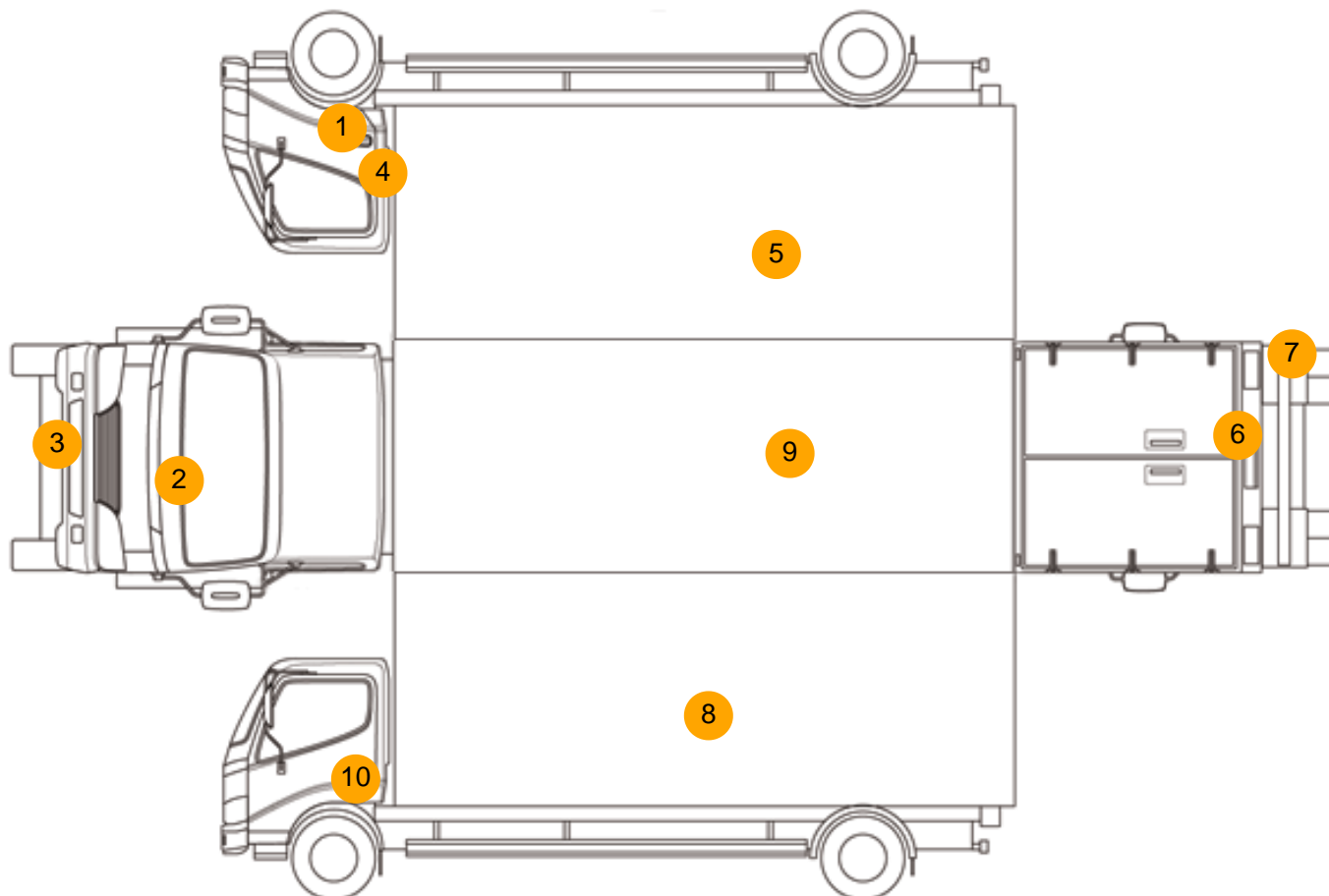
- Radio/CD
- Front electric windows
- Cloth seat trim

## Photos





## Condition Check



## Damage Photos



1: Sill os  
Rusted  
Over 5mm



2: Bonnet  
Chipped  
1 To 5



3: Bumper Front  
Dented  
Over 30mm



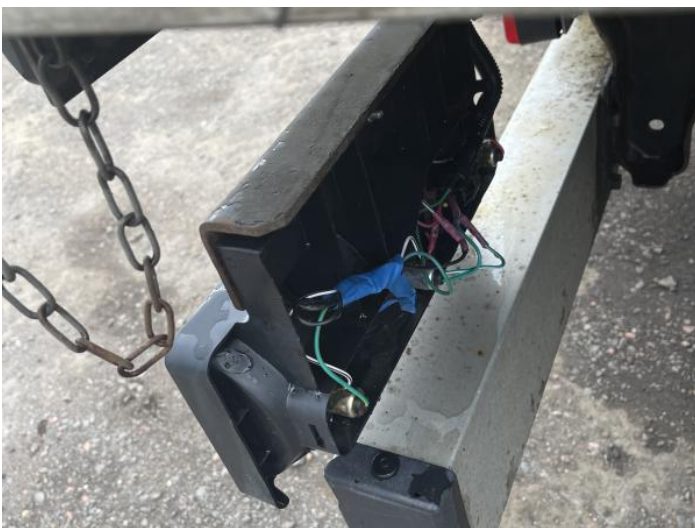
4: Door osf  
Dented  
Over 30mm



5: Qtr Panel osr  
Dented  
With Paint Damage



6: Tailgate  
Dented  
With Paint Damage



7: Fog Lamp osr  
Broken  
Replace



8: Qtr Panel nsr  
Dented  
Over 30mm



9: Other  
N/A  
N/A

10: Door nsf  
Dented  
With Paint Damage

**Interior**

Carpet Condition		Average	Upholstery Condition		Average
Seat Condition		Average	Odour		-
Engine Runs	OK		Gearbox 1st and Reverse Test	OK	
Brakes	OK		Clutch Slip Test from Static	OK	
Turbo Boosting	OK		Gearbox Static Gear Selection (engine running)	OK	
Parking Brake	OK		No Excessive Smoking	OK	
EML light illuminated	OK		Oil warning light illuminated	OK	
Airbag light illuminated	OK		DPF light illuminated	OK	
ABS light illuminated	OK		Service indicator light illuminated	OK	
Windows	OK		Radio	OK	
			Steering	OK	