

VEHICLE INSPECTION REPORT

SJ16NXP

Mercedes-Benz Antos 1827

Inspection

Serious Damage? No

Vehicle

VAT Plus VAT

V5 Present

Details

Reg. date	20/05/2016	VIN	WDB96300320056490	Doors	2
Year	2016	Body Style	Fridge Box	Steering Combi	Steer
Mileage	363,264 Km Warranted	Keys	2	Rear Suspension	Air
Fuel Type	Diesel	Cab Type	DAY CAB	Rear Doors	Barn
Colour	WHITE	Gearbox	AUTO	Tail Lift	Tuckaway

FRIGOBLOCK UNIT

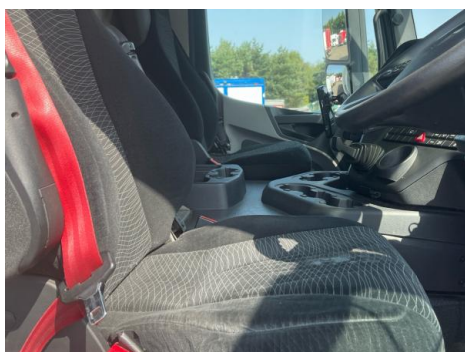
Tyres

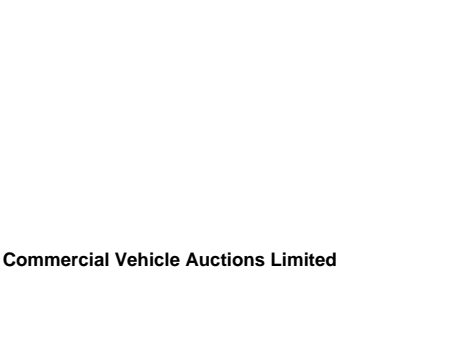
NSF	NSI1	NSI2	NSI3	NSI4
OSF	OSI1	OSI2	OSI3	OSI4
Spare	NSO1	NSO2	NSO3	NSO4
	OSO1	OSO2	OSO3	OSO4

Features

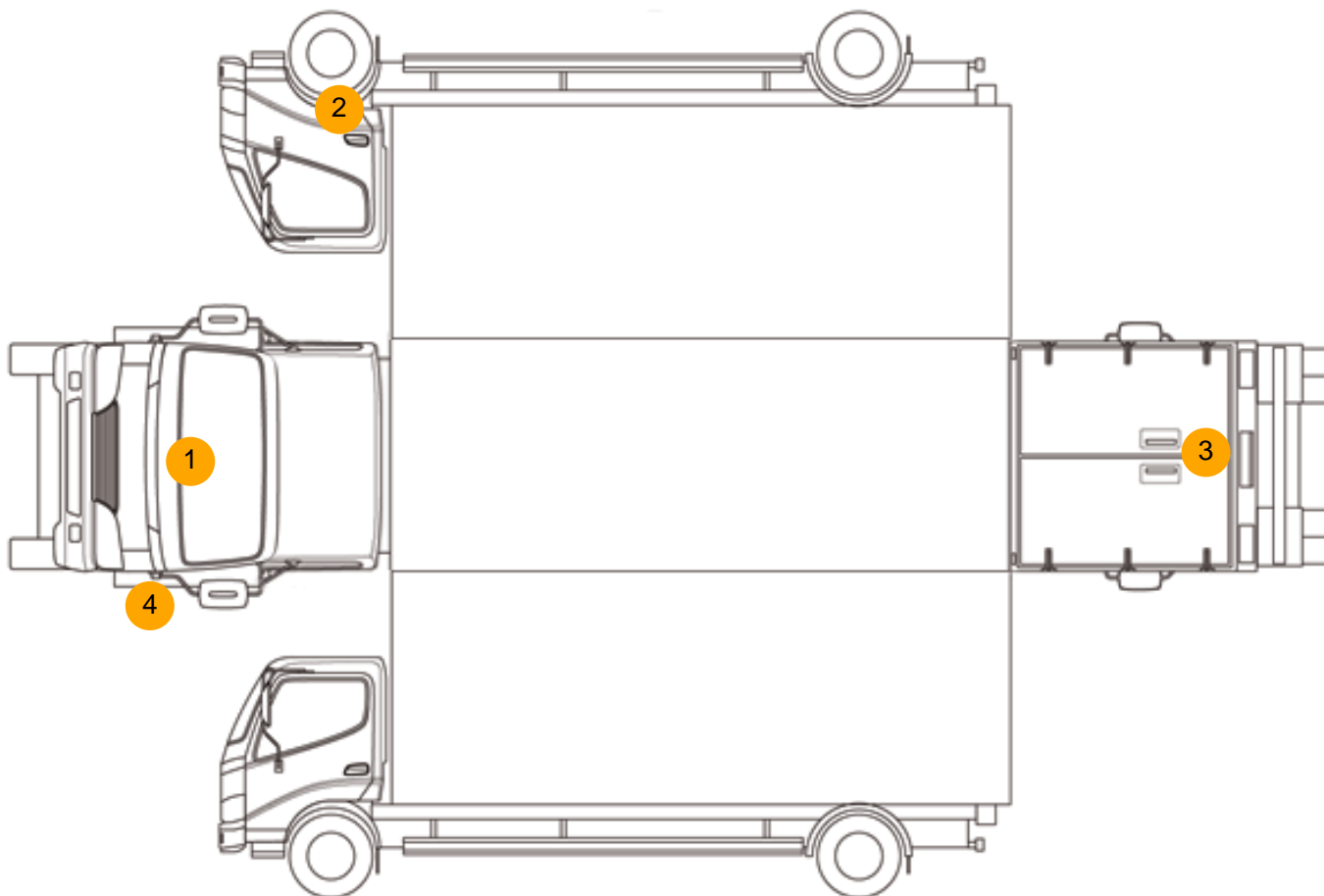
- Cruise control
- Park assist camera
- Radio/CD
- Cloth seat trim

Photos





Condition Check



Damage Photos



1: Bonnet
Chipped
Multiple Chips



2: Door Moulding osf
Scuffed (Unpainted)
Over 100mm



3: Tailgate
Rusted
Over 5mm



4: Bumper Front Moulding
Scuffed (Unpainted)
Over 100mm

Interior

Carpet Condition	Average		Upholstery Condition	Average
Seat Condition	Average		Odour	-
Engine Runs	OK		Gearbox 1st and Reverse Test	OK
Brakes	OK		Clutch Slip Test from Static	OK
Turbo Boosting	OK		Gearbox Static Gear Selection (engine running)	OK
Parking Brake	OK		No Excessive Smoking	OK
EML light illuminated	OK		Oil warning light illuminated	OK
Airbag light illuminated	OK		DPF light illuminated	OK
ABS light illuminated	OK		Service indicator light illuminated	OK
Windows	OK		Radio	OK
			Steering	OK