

VEHICLE INSPECTION REPORT

DA19HAO

Isuzu N75 190

Inspection

Serious Damage? No

Vehicle

VAT Plus VAT

V5 To Follow

Details

Reg. date	16/04/2019	VIN	JAANPR75MJ7100621	Axle Combi	4x2
Year	2019	Body Style	Dropside	Rear Suspension	Steel
Mileage	153,225 Km Warranted	MOT Due	31/03/2026	Tail Lift	Cantilever
Fuel Type	Diesel	Cab Type	DAY CAB		
Colour	BLUE/YELLOW	Gearbox	AUTOMATIC		

WARNING LIGHT ON DASH SERVICE SCHEDULE LIST AVAILABLE, SURROUND CAMERA SYSTEM

Tyres

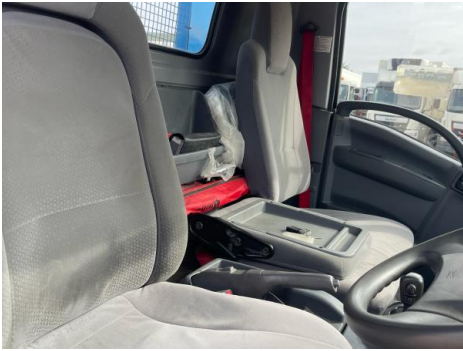
NSF	NSI1	NSI2	NSI3	NSI4
OSF	OSI1	OSI2	OSI3	OSI4
Spare	NSO1	NSO2	NSO3	NSO4
	OSO1	OSO2	OSO3	OSO4

Features

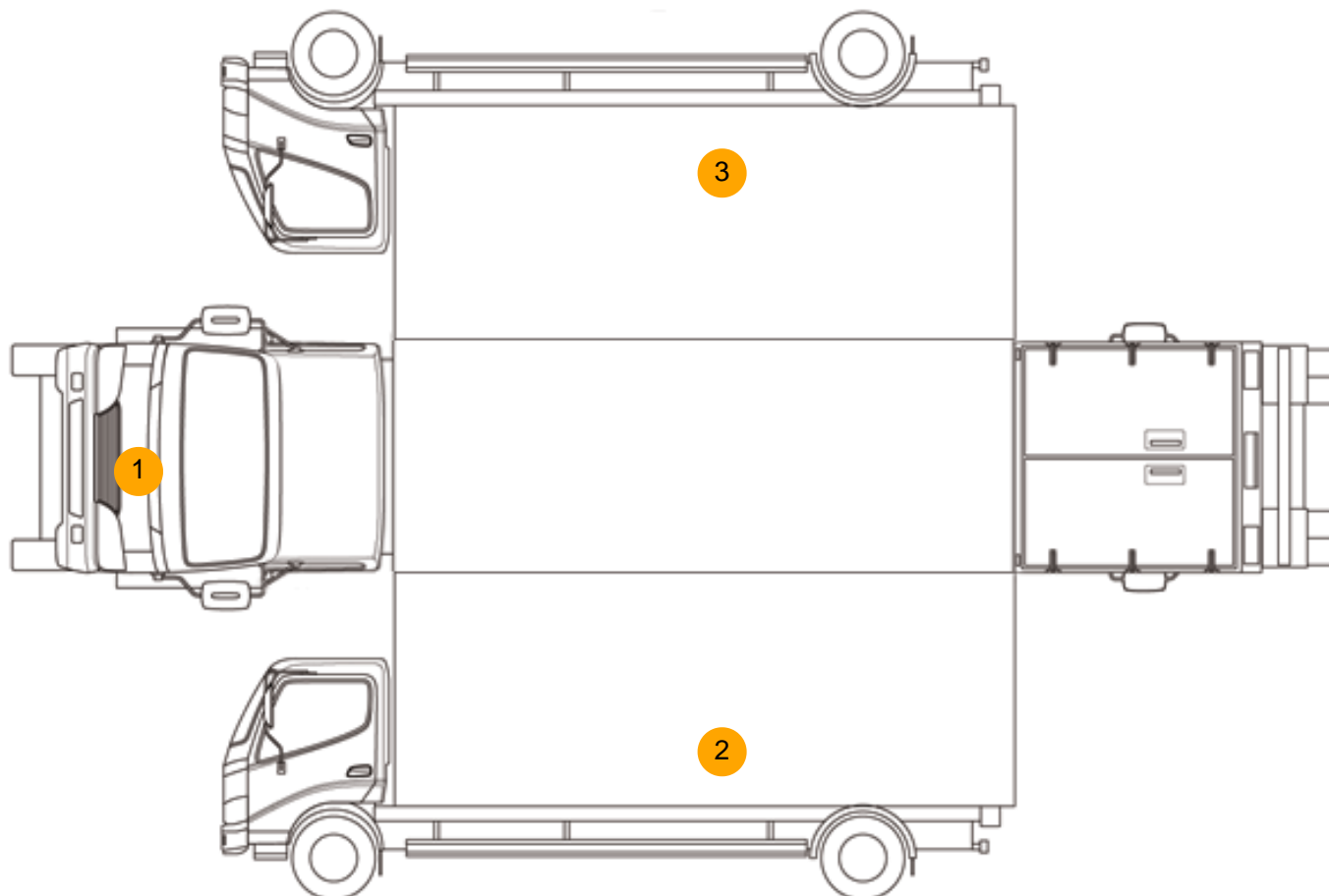
- Park assist camera

Photos





Condition Check



Damage Photos



1: Bumper Front
Chipped
1 To 5



2: Qtr Panel nsr
Dented
Over 30mm



3: Qtr Panel osr
Dented
Over 30mm

Interior

Carpet Condition	Average		Upholstery Condition	Average
Seat Condition	Average		Odour	-
Engine Runs	OK		Gearbox 1st and Reverse Test	OK
Brakes	OK		Clutch Slip Test from Static	OK
Turbo Boosting	OK		Gearbox Static Gear Selection (engine running)	OK
Parking Brake	OK		No Excessive Smoking	OK
EML light illuminated	Fault		Oil warning light illuminated	OK
Airbag light illuminated	OK		DPF light illuminated	OK
ABS light illuminated	OK		Service indicator light illuminated	OK