

VEHICLE INSPECTION REPORT

SG16DWJ

Vauxhall Movano 2.3 CDTi BiTurbo ecoFLEX 136ps

Inspection

Serious Damage? No

Vehicle

VAT Plus VAT

V5 Present

Details

Reg. date	30/06/2016	Body Style	Tipper L2	Gearbox	MANUAL
Year	2016	Keys	2	Gears	6
Mileage	40,261 Miles Warranted	MOT Due	29/07/2026	Doors	2
Fuel Type	Diesel	CAP Clean	£5,625.00	Steering Combi	Standard Axle
Colour	WHITE	CAP Average	£4,675.00	Rear Suspension	Steel
VIN	W0LMSMSY3GB096893	CAP Below	£3,450.00		

Tyres

NSF

NSR

OSF

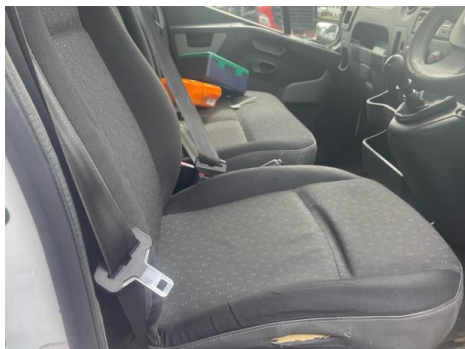
OSR

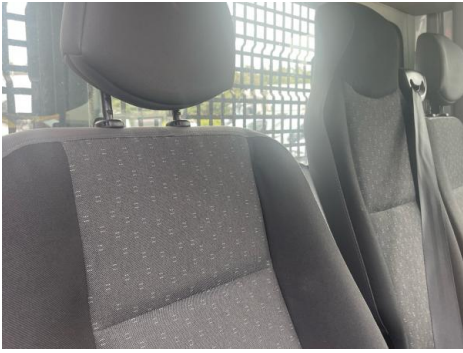
Spare

Features

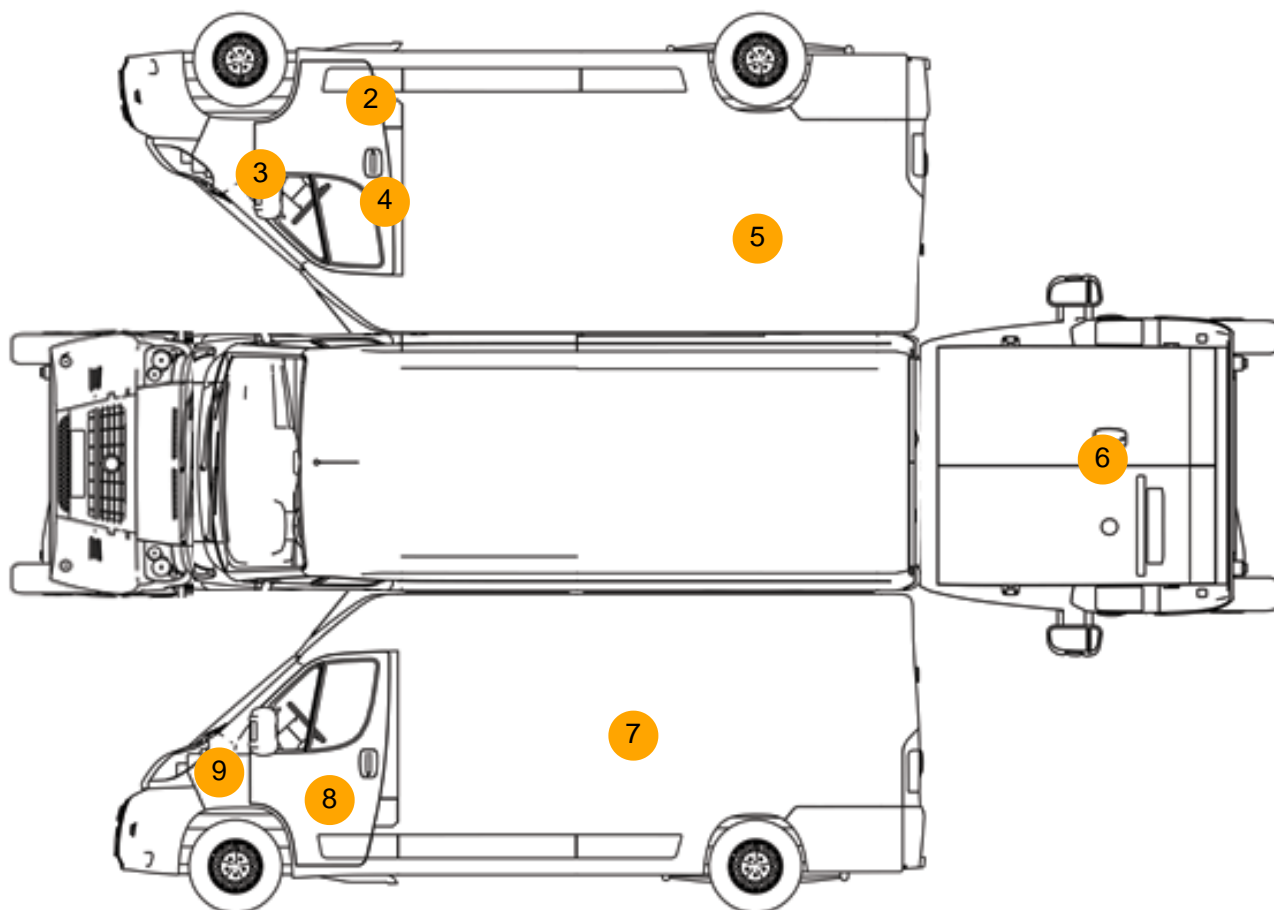
- Radio/CD
- Front electric windows
- Drivers airbag
- Central locking
- Cloth seat trim

Photos





Condition Check



Damage Photos



1: Seat Base Cover osf
Torn
Over 3mm



2: Sill os
Rusted
Over 5mm



3: Wing osf
Dented
With Paint Damage



4: Door osf
Dented
Over 2 UpTo 10mm



5: Qtr Panel osr
Dented
With Paint Damage



6: Tailgate
Rusted
Over 5mm



7: Qtr Panel nsr
Dented
With Paint Damage



8: Door nsf
Dented
With Paint Damage



9: Wing nsf
Dented
With Paint Damage

Interior

Carpet Condition		Average	Upholstery Condition		Average
Seat Condition		Average	Odour		No
Engine Runs		OK	Gearbox 1st and Reverse Test		OK
Brakes		OK	Clutch Slip Test from Static		OK
Turbo Boosting		OK	Gearbox Static Gear Selection (engine running)		OK
Parking Brake		OK	No Excessive Smoking		OK
EML light illuminated		OK	Oil warning light illuminated		OK
Airbag light illuminated		OK	DPF light illuminated		OK
ABS light illuminated		OK	Service indicator light illuminated		OK
Windows		OK	Radio		OK
			Steering		OK