

## VEHICLE INSPECTION REPORT

**VO17HCJ**

### Volkswagen Transporter T32 2.0 TDI BMT 150PS 4 MOTION STARTLINE

#### Inspection

Serious Damage? No

#### Vehicle

VAT Plus VAT

V5 Present

#### Details

Reg. date 26/04/2017

Year 2017

Mileage 146,672 Miles  
Warranted

Fuel Type Diesel

Colour SILVER

VIN WV1ZZZ7HZHH106703

Body Style Panel Van

MOT Due 25/10/2025

CAP Clean £7,925.00

CAP Average £6,700.00

CAP Below £5,125.00

Gearbox MANUAL

Gears 6

AD-BLUE, SIDE LOAD DOOR, E/ MIRRORS

#### Tyres

NSF

NSR

OSF

OSR

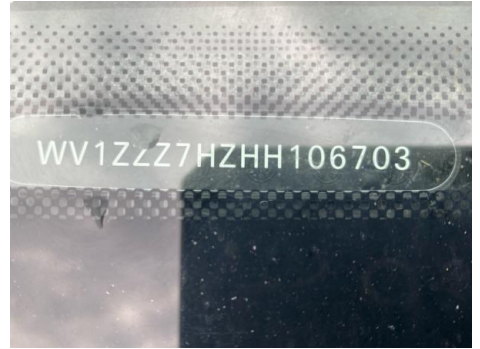
Spare

## Features

- Bluetooth connection
- Air conditioning
- Passenger airbag
- Rear parking sensor
- Front electric windows
- Central locking
- Auxiliary input socket
- Metallic Paint
- Cloth seat trim
- Digital radio
- Drivers airbag

## Photos

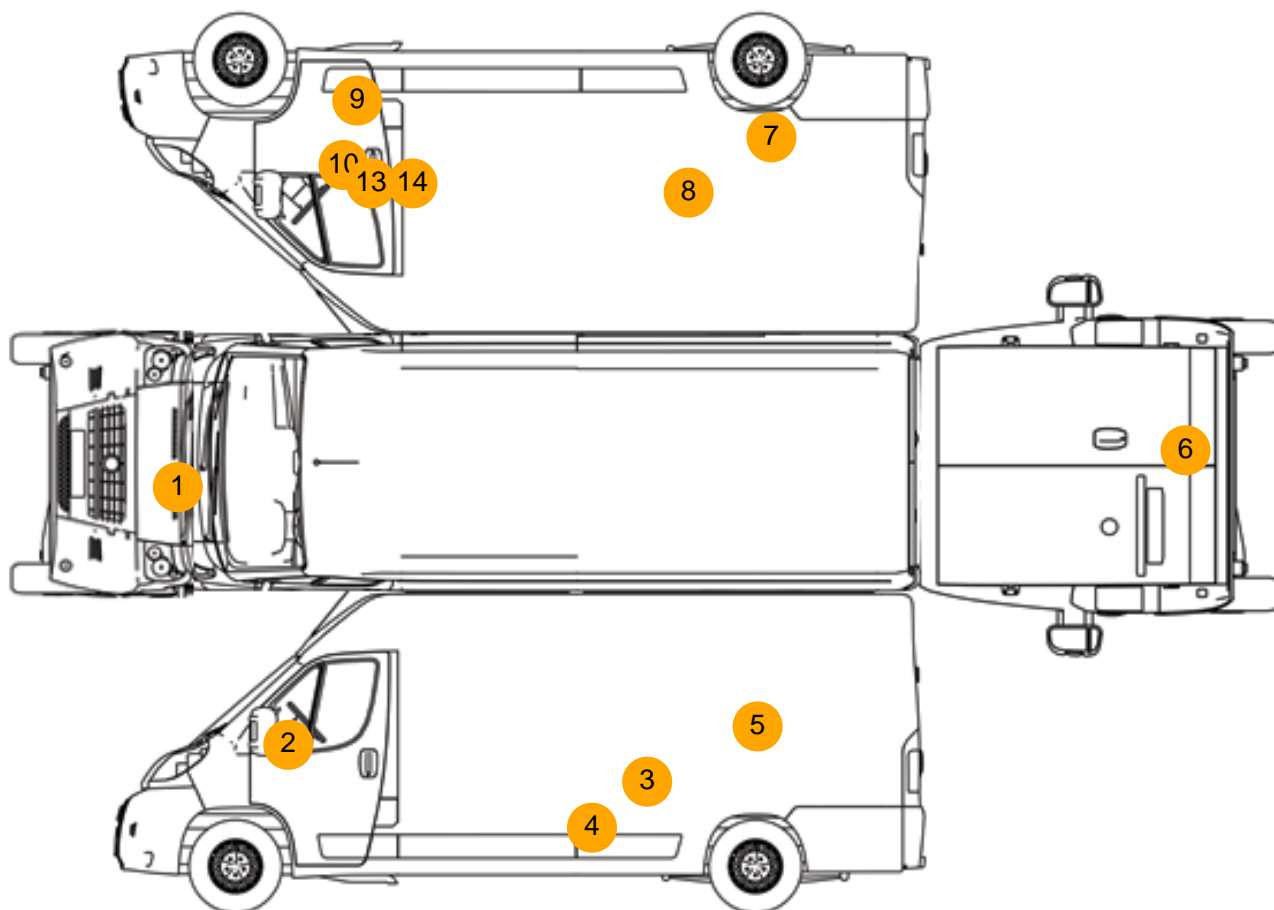








## Condition Check



## Damage Photos



1: Bonnet  
Chipped  
Multiple Chips



2: Door Mirror Assy nsf  
Scuffed (Unpainted)  
Over 100mm





3: Qtr Panel nsr  
Scratched  
Over 25mm Thru Paint



4: Qtr Panel nsr  
Scratched  
Over 25mm Thru Paint



5: Qtr Panel nsr  
Scratched  
Over 25mm Thru Paint



6: Tailgate  
Dented  
With Paint Damage



7: Qtr Panel osr  
Chipped  
Multiple Chips



8: Qtr Panel osr  
Scratched  
Over 25mm Thru Paint



9: Door osf  
Scratched  
Over 25mm Thru Paint



10: Door osf  
Chipped  
Multiple Chips



11: Door Pad osf  
Soiled  
Heavy



12: Seat Base Cover nsf  
Soiled  
Heavy



13: Qtr Panel osr  
Scratched  
Over 25mm Thru Paint



14: Door osf  
Scratched  
Over 25mm Thru Paint

## Interior

Carpet Condition		Upholstery Condition	
Seat Condition		Odour	
OK		Poor	
Poor		No	
Engine Runs		OK	No Excessive Smoking
			OK
EML light illuminated		OK	DPF light illuminated
			OK
ABS light illuminated		OK	