

VEHICLE INSPECTION REPORT

OU15ZVF

MAN NEOPLAN TOURLINER COACH

Non Runner
Inspection

Serious Damage?	No	Vehicle	
		VAT	Plus VAT
		V5	Buyer To Apply

Details

Reg. date	14/05/2015	VIN	WAGP22ZZ3FT022331	Axle Combi	6x2
Year	2015	Body Style	Coach	Steering Combi	Steer
Mileage	Not Showing	Keys	1	Rear Suspension	Air
Fuel Type	Diesel	Gearbox	AUTOMATIC		
Colour	WHITE	Doors	3		

5% BUYERS FEE *NON-RUNNER - DOESNT START OR DRIVE* *CRACKED WINDSCREEN* 61 SEAT CAPACITY (4 SEATS MISSING), 57 WITH WHEELCHAIR ACCESS, WHEELCHAIR LIFT, TOILET, FABRIC SEATS, 3 PT SEATBELTS, FULL WIDTH UNDERBODY STORAGE, OVERHEAD STOWAGE

Tyres

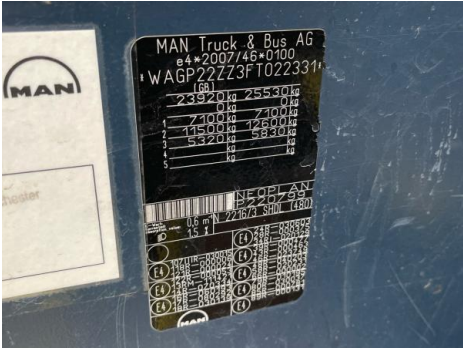
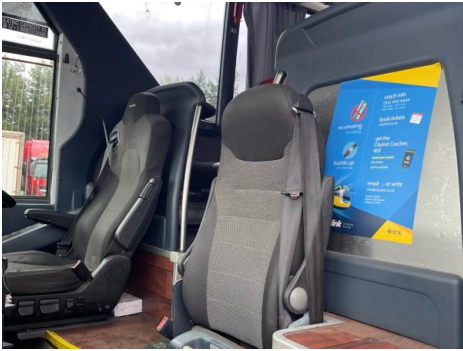
NSF	NSI1	NSI2	NSI3	NSI4
OSF	OSI1	OSI2	OSI3	OSI4
Spare	NSO1	NSO2	NSO3	NSO4
	OSO1	OSO2	OSO3	OSO4

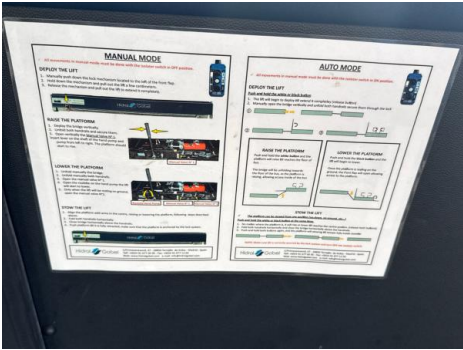
Features

- Bluetooth connection
- Radio/CD
- Cloth seat trim

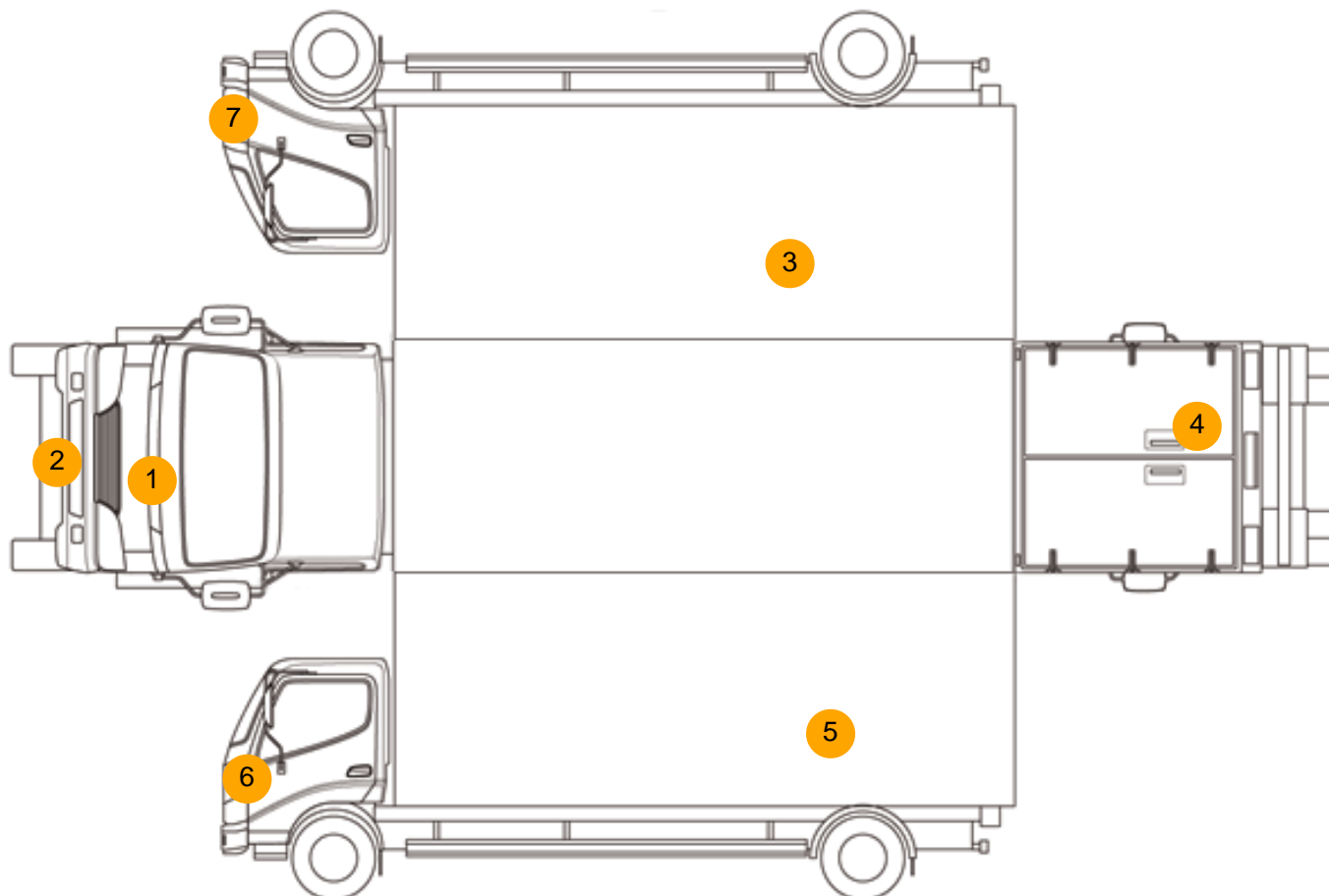
Photos







Condition Check



Damage Photos



1: Bonnet
Missing
Replace



2: Bumper Front
Missing
Replace



3: Qtr Panel osr
Rusted
Over 5mm



4: Bumper Rear
Cracked
Over 25mm



5: Qtr Panel nsr
Dented
With Paint Damage



6: Headlamp ns
Missing
Replace



7: Headlamp os
Missing
Replace

Interior

Carpet Condition	Average	Upholstery Condition	Average
Seat Condition	Average	Odour	-
Engine Runs	Fault	Gearbox 1st and Reverse Test	Fault
Brakes	Fault	Clutch Slip Test from Static	Fault
Turbo Boosting	Fault	Gearbox Static Gear Selection (engine running)	Fault
Parking Brake	Fault	No Excessive Smoking	Fault
EML light illuminated	Fault	Oil warning light illuminated	Fault
Airbag light illuminated	Fault	DPF light illuminated	Fault
ABS light illuminated	Fault	Service indicator light illuminated	Fault
Windows	OK	Radio	OK