

# VEHICLE INSPECTION REPORT

**BF18TKK**

## Iveco Daily 35-120 2.3 3520WB

### Inspection

Serious Damage? No

### Vehicle

VAT Plus VAT

V5 Present

### Details

Reg. date 26/03/2018

Year 2018

Mileage 59,691 Miles  
Warranted

Fuel Type Diesel

Colour WHITE

VIN ZCFC1358X05204987

Body Style Panel Van

MOT Due Expired

CAP Clean £5,125.00

CAP Average £4,425.00

CAP Below £3,450.00

Gearbox MANUAL

Gears 6

\*ENGINE ISSUES / OVERHEATS, FUEL INJECTOR ISSUES\* SIDE LOAD DOOR, TOW BAR, DEADLOCKS (NO KEYS), AIR COMPRESSOR EQUIPMENT & 110V OUTLETS, 3520 WB

### Tyres

NSF

NSR

OSF

OSR

Spare

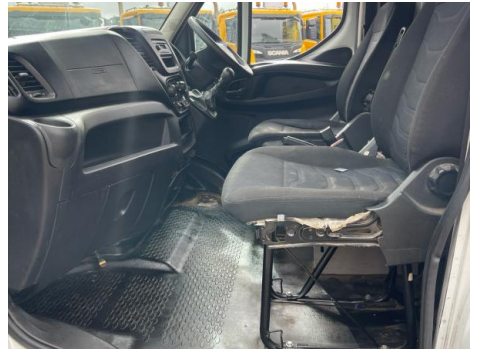
## Features

- Bluetooth connection
- Radio/CD
- Passenger airbag
- Park assist camera
- Air conditioning
- Central locking
- Rear parking sensor
- Front electric windows
- Cloth seat trim
- Digital radio
- Drivers airbag

## Photos



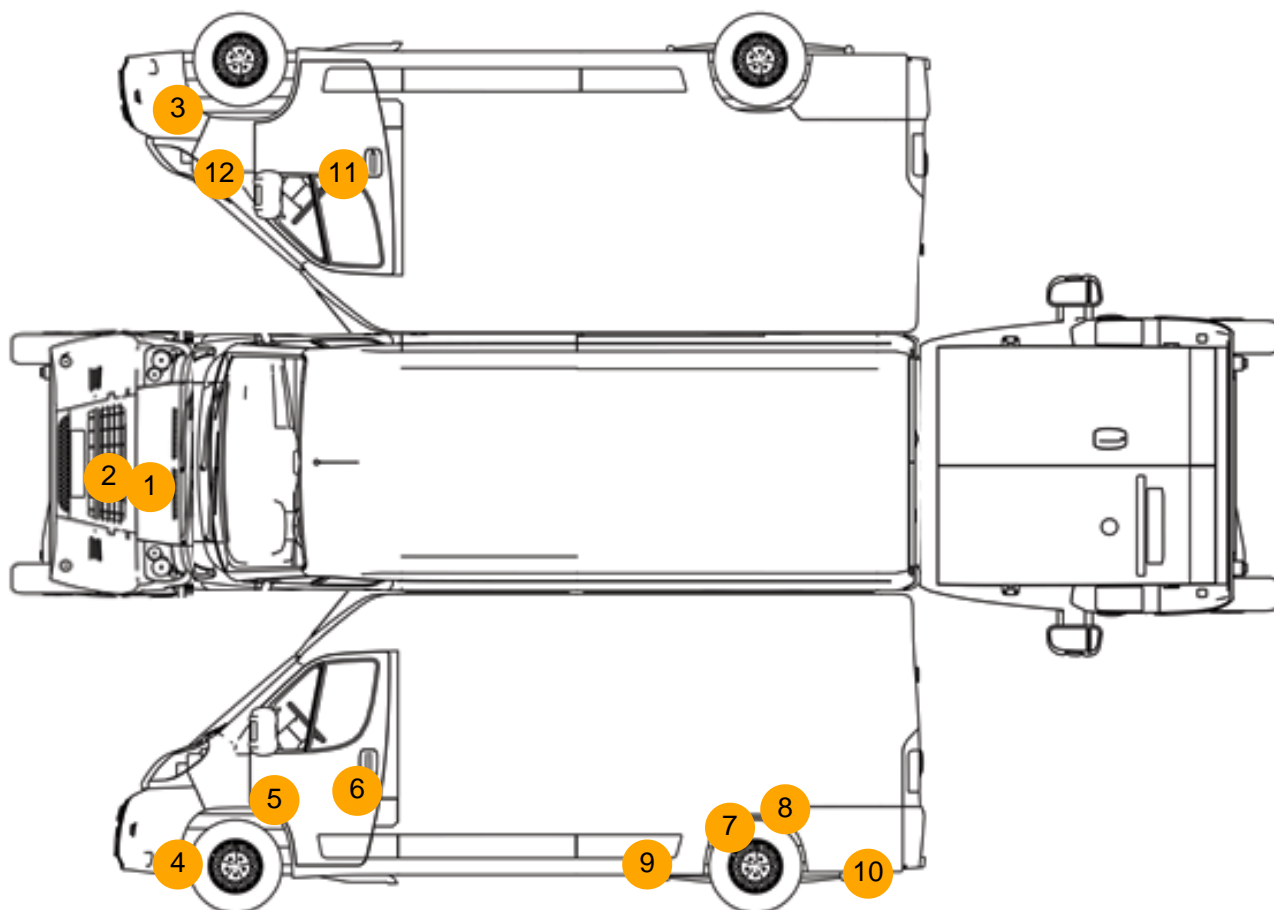








## Condition Check



## Damage Photos



1: Bonnet  
Chipped  
Multiple Chips



2: Panel Front  
Cracked  
Replace





3: Bumper Front  
Hole  
Over 25mm



4: Bumper Front  
Scratched  
Over 100mm Thru Paint



5: Wing nsf  
Dented  
With Paint Damage



6: Door nsf  
Dented  
Over 30mm



7: Qtr Panel nsr  
Dented  
With Paint Damage



8: Qtr Panel nsr  
Dented  
With Paint Damage





9: Qtr Panel Moulding ns  
Scuffed (Unpainted)  
Over 100mm



10: Qtr Panel Moulding ns  
Broken  
Replace



11: Door osf  
Dented  
Over 30mm



12: Wing osf  
Scratched  
Over 25mm Thru Paint



13: Carpets Front  
Holed  
Over 3mm



14: Seat Base Cover osf  
Torn  
Over 3mm



15: Seat Base Cover nsf  
Soiled  
Heavy

Interior

Carpet Condition	Poor	Upholstery Condition	OK
Seat Condition	Poor	Odour	No
Engine Runs	OK	No Excessive Smoking	OK
EML light illuminated	OK	DPF light illuminated	OK
ABS light illuminated	OK		