

VEHICLE INSPECTION REPORT

YJ65UGL

Daf CF 400

Inspection

Serious Damage? No

Vehicle

VAT Plus VAT

V5 Present

Details

Reg. date 20/10/2015

Year 2015

Mileage 244,244 Km Not Warranted

Fuel Type DIESEL

Colour WHITE

VIN XLRACM4100G065223

Body Style Beavertail & Crane

Cab Type DAY CAB

Gearbox AUTOMATIC

Axle Combi 8x2

Rear Suspension Air

HYDRAULIC PIPE SPLIT, WARNING LIGHTS ON DASH, MOT HISTORY POSSIBLY IN KM/MILES INCORRECTLY HYDRAULIC RAMPS, HMF 4020 REMOTE CRANE (2014), 2ND PAGE OF V5 ONLY, WINCH, REAR-LIFT

Tyres

NSF NSI1

NSI2

NSI3

NSI4

OSF OSI1

OSI2

OSI3

OSI4

Spare NSO1

NSO2

NSO3

NSO4

OSO1

OSO2

OSO3

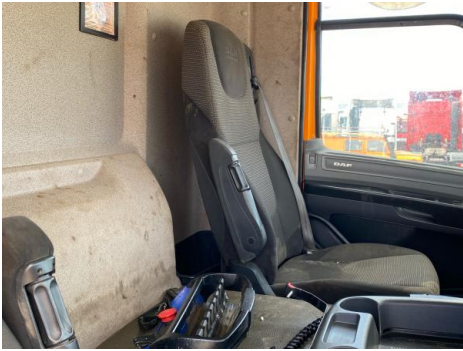
OSO4

Features

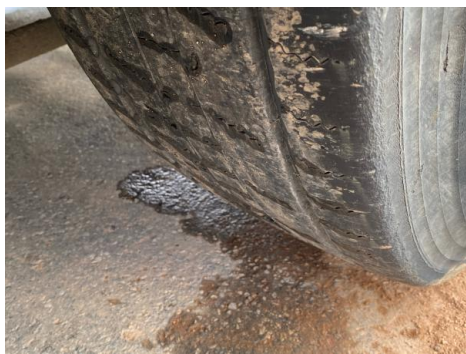
- Bluetooth connection
- Cruise control
- Digital radio
- Air conditioning
- Front electric windows
- Central locking
- Cloth seat trim

Photos

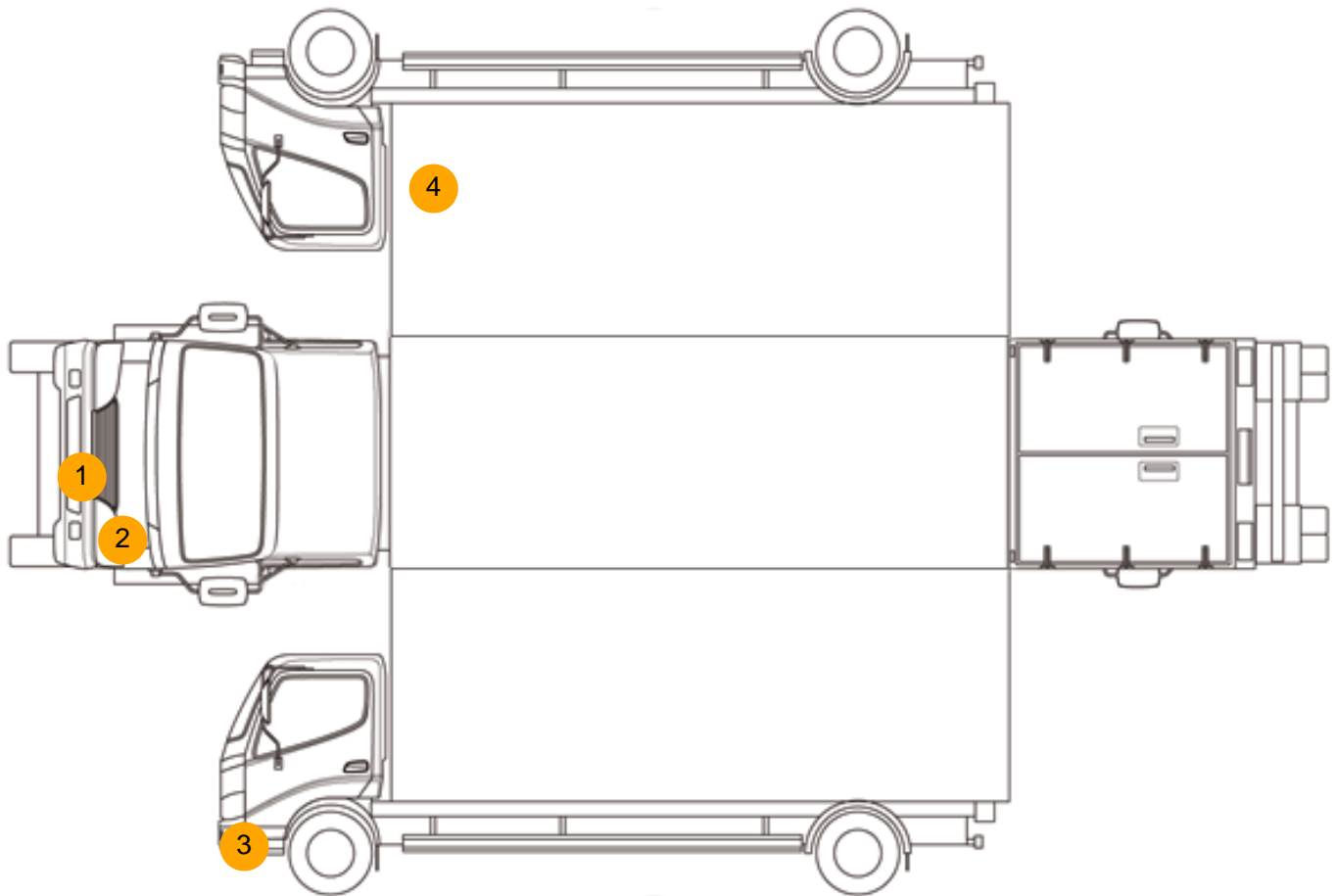








Condition Check



Damage Photos



1: Number Plate Front
Broken
Replace



2: Bumper Front Moulding
Missing
Replace



3: Bumper Front
Dented
With Paint Damage



4: Qtr Panel osr
Scratched
Over 25mm Thru Paint



5: Door Pad osf
Broken
Replace

Interior

Carpet Condition	OK	Upholstery Condition	Poor
Seat Condition	OK	Odour	-
Engine Runs	OK	No Excessive Smoking	OK
EML light illuminated	OK	DPF light illuminated	OK
ABS light illuminated	OK		