

# VEHICLE INSPECTION REPORT

**DG66RYY**

## Man TGS 26.360

### Inspection

Serious Damage? No

### Vehicle

VAT Plus VAT

V5 To Follow

### Details

Reg. date	25/11/2016	Colour	BLUE	Cab Type	DAY CAB
Year	2016	VIN	WMA18SZZ7HM717965	Gearbox	AUTOMATIC
Mileage	385,608 Km Warranted	Body Style	Dropside & Crane	Axle Combi	6x2
Fuel Type	Diesel	MOT Due	30/11/2025	Rear Suspension	Air

\*INPUT ERRORS ON MOT HISTORY\* REAR-LIFT, HMF 1430 1EXT REMOTE CRANE (YEAR 2016), SERVICE SCHEDULE LIST AVAILABLE

### Tyres

NSF	NSI1	NSI2	NSI3	NSI4
OSF	OSI1	OSI2	OSI3	OSI4
Spare	NSO1	NSO2	NSO3	NSO4
	OSO1	OSO2	OSO3	OSO4

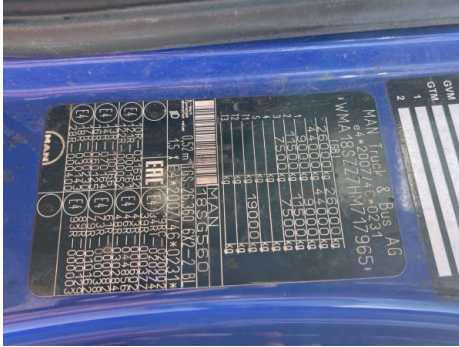
## Features

- Cruise control
- Park assist camera
- Radio/CD
- Front electric windows
- Central locking
- Cloth seat trim

## Photos



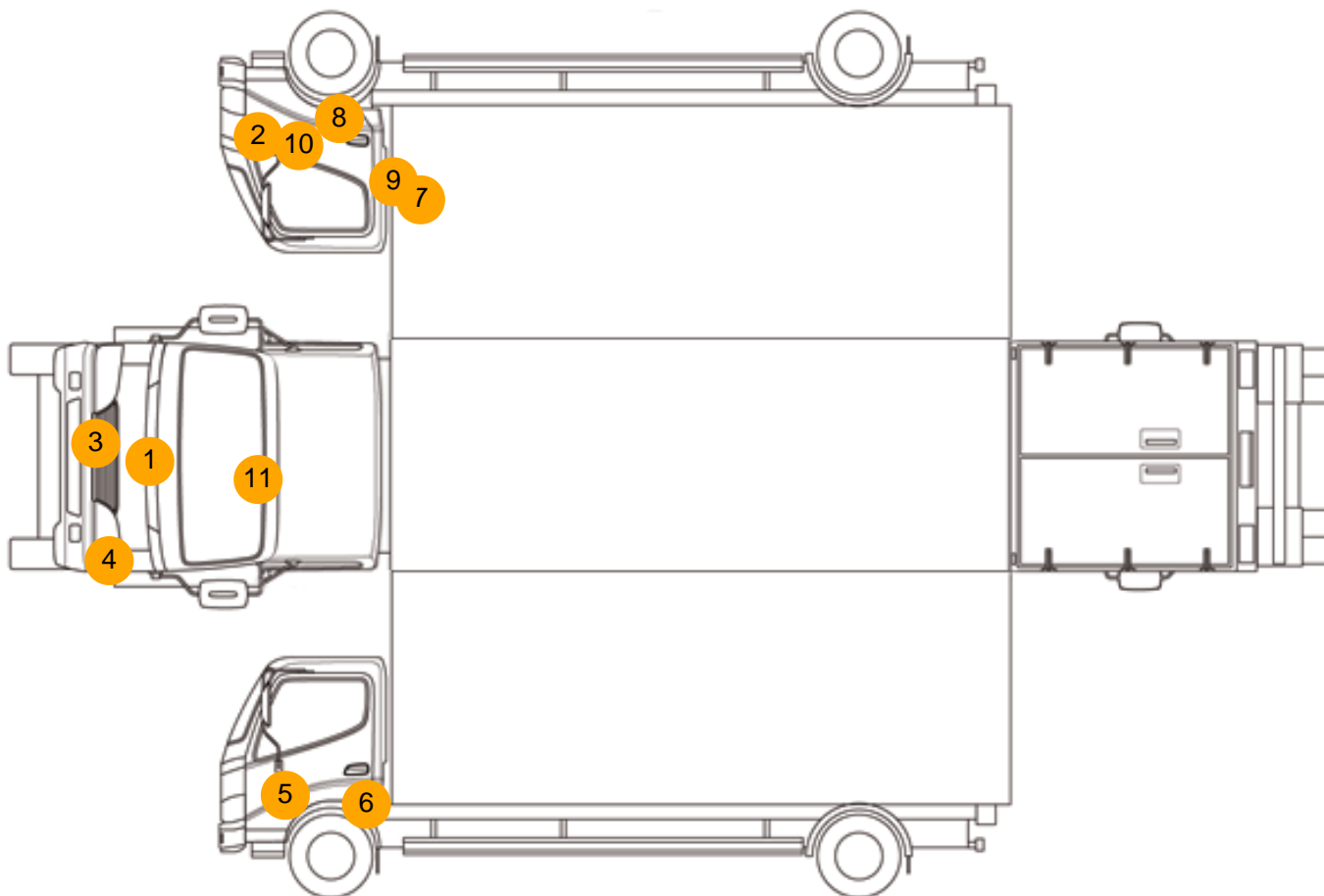








## Condition Check



## Damage Photos



1: Bonnet  
Chipped  
Multiple Chips



2: Bumper Front  
Scratched  
Over 100mm Thru Paint





3: Bumper Front  
Poor Previous Repair  
Poor Colour



4: Bumper Front  
Scratched  
Over 100mm Thru Paint



5: Door nsf  
Scratched  
Over 25mm Thru Paint



6: Wing nsf  
Scratched  
Over 25mm Thru Paint



7: Qtr Panel osr  
Scratched  
Over 25mm Not Thru Paint



8: Wing osf  
Scratched  
Over 25mm Thru Paint



9: Door osf  
Dented  
With Paint Damage



10: Door osf  
Scratched  
Over 25mm Thru Paint



11: Screen Front  
Chipped  
Over 10mm

Interior

Carpet Condition	OK	Upholstery Condition	OK
Seat Condition	OK	Odour	-
Engine Runs	OK	No Excessive Smoking	OK
EML light illuminated	OK	DPF light illuminated	OK
ABS light illuminated	OK		