

VEHICLE INSPECTION REPORT

A161658

Volvo B9R PLAXTON PANTHER

Inspection

Serious Damage? No

Vehicle

VAT Plus VAT
V5 Buyer To Apply

Details

Reg. date	13/05/2013	Colour	WHITE	Cab Type	DAY CAB
Year	2013	VIN	YV3S5P728DA161658	Gearbox	AUTOMATIC
Mileage	184,082 Km Warranted	Body Style	Coach	Axle Combi	4x2
Fuel Type	Diesel	MOT Due	06/11/2025	Rear Suspension	Air

5% BUYERS FEE, FOR SALE VIA TENDER ENDING 12 NOON 09/09/2025 53 SEATS + DRIVER, RECLINING FABRIC SEATS WITH FOOTRESTS, 3 PT SEATBELTS, OVERHEAD STOWAGE, REAR EMERGENCY EXIT, FULL WIDTH UNDER BODY STORAGE, *MOD 654 FORM IN OFFICE*

Tyres

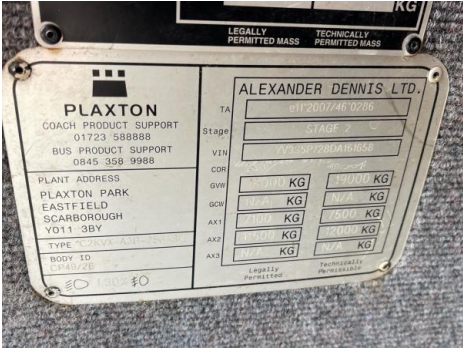
NSF	NSI1	NSI2	NSI3	NSI4
OSF	OSI1	OSI2	OSI3	OSI4
Spare	NSO1	NSO2	NSO3	NSO4
	OSO1	OSO2	OSO3	OSO4

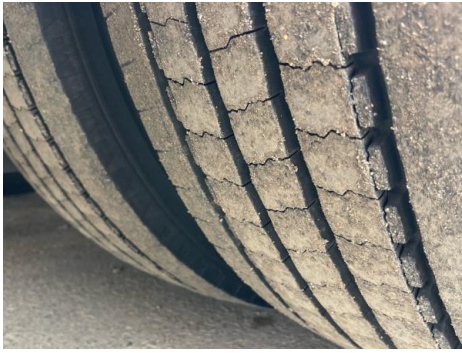
Features

- Bluetooth connection
- Cruise control
- Park assist camera
- Radio/CD
- Air conditioning
- Central locking
- Cloth seat trim

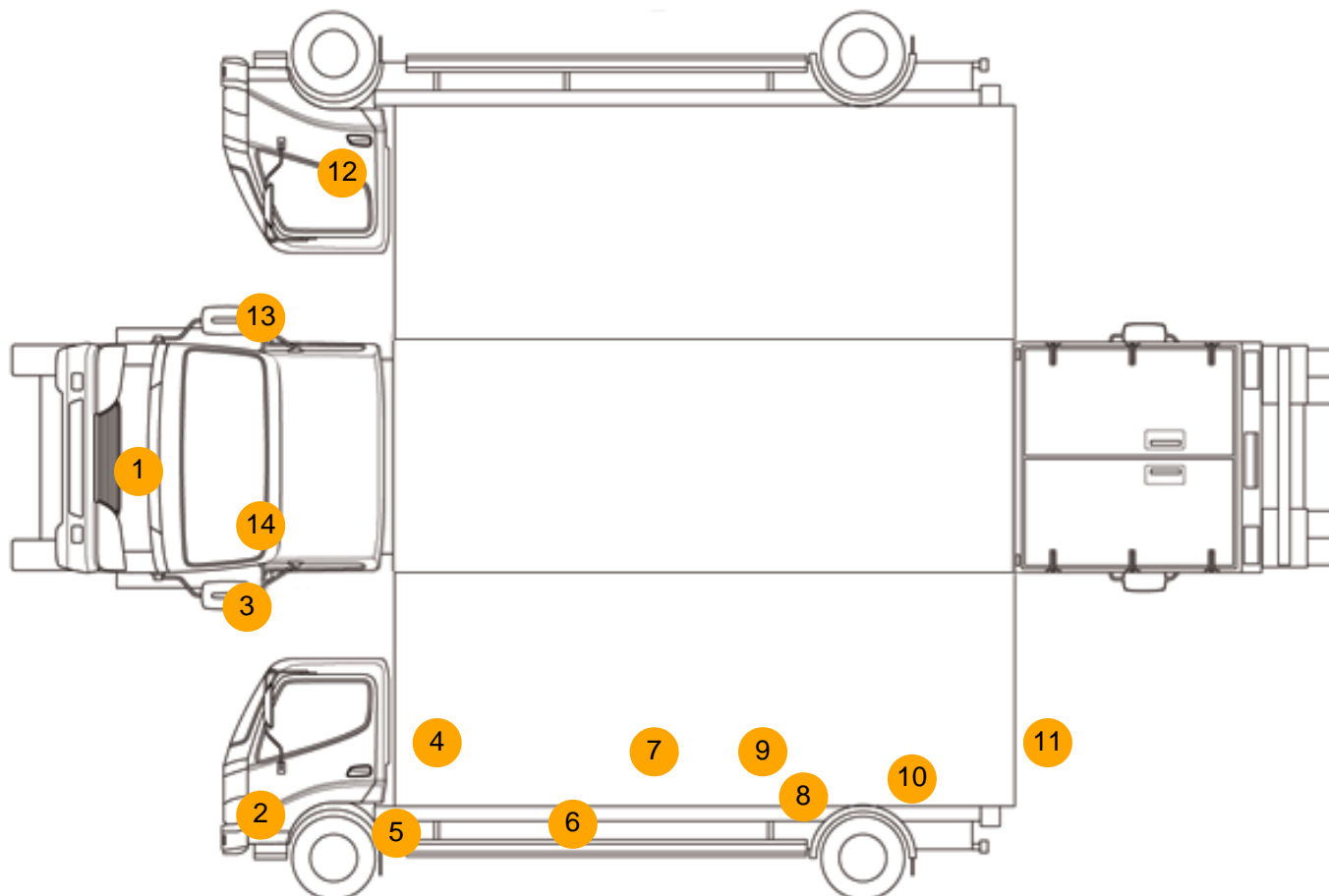
Photos







Condition Check



Damage Photos



1: Bonnet
Chipped
Multiple Chips



2: Panel Front
Scratched
Over 25mm Thru Paint



3: Door Mirror Assy nsf
Broken
Replace



4: Badgedecal Front
Missing
Replace



5: Wing nsf
Dented
Over 30mm



6: Qtr Panel nsr
Dented
With Paint Damage



7: Qtr Panel nsr
Dented
Over 30mm



8: Qtr Panel nsr
Scratched
Over 25mm Thru Paint



9: Qtr Panel nsr
Scratched
Over 25mm Not Thru Paint



10: Qtr Panel nsr
Scratched
Over 25mm Thru Paint



11: B Post ns
Cracked
Replace



12: Panel Front
Scratched
Over 25mm Thru Paint



13: Door Mirror Assy osf
Broken
Replace



14: Screen Front
Chipped
Over 10mm

Interior

Carpet Condition	OK	Upholstery Condition	OK
Seat Condition	OK	Odour	-
Engine Runs	OK	No Excessive Smoking	OK
EML light illuminated	OK	DPF light illuminated	OK
ABS light illuminated	OK		