

VEHICLE INSPECTION REPORT

SJ16NXT

Mercedes-Benz Antos 1827

Inspection

Serious Damage? No

Vehicle

VAT Plus VAT

V5 Present

Details

Reg. date	13/05/2016	Body Style	Fridge Box	Steering Combi	Steer
Year	2016	Keys	2	Rear Suspension	Air
Mileage	444,847 Km Warranted	MOT Due	31/07/2026	Rear Doors	Barn
Fuel Type	Diesel	Cab Type	DAY CAB	Tail Lift	Tuckaway
Colour	WHITE	Gearbox	AUTOMATIC		
VIN	WDB96300320056837	Axle Combi	4x2		

WARNING LIGHTS ON DASH FRIGOBLOCK FK24 FRIDGE (18,442 HOURS)

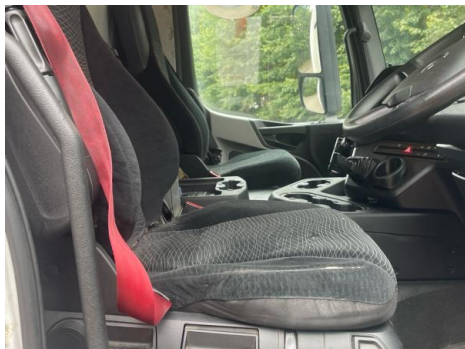
Tyres

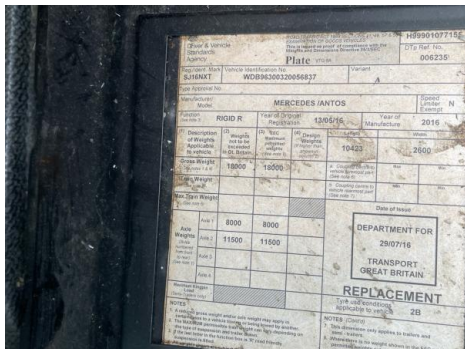
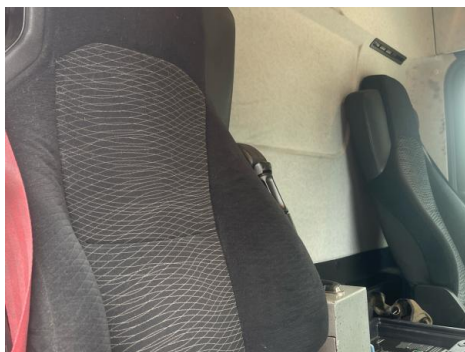
NSF	NSI1	NSI2	NSI3	NSI4
OSF	OSI1	OSI2	OSI3	OSI4
Spare	NSO1	NSO2	NSO3	NSO4
	OSO1	OSO2	OSO3	OSO4

Features

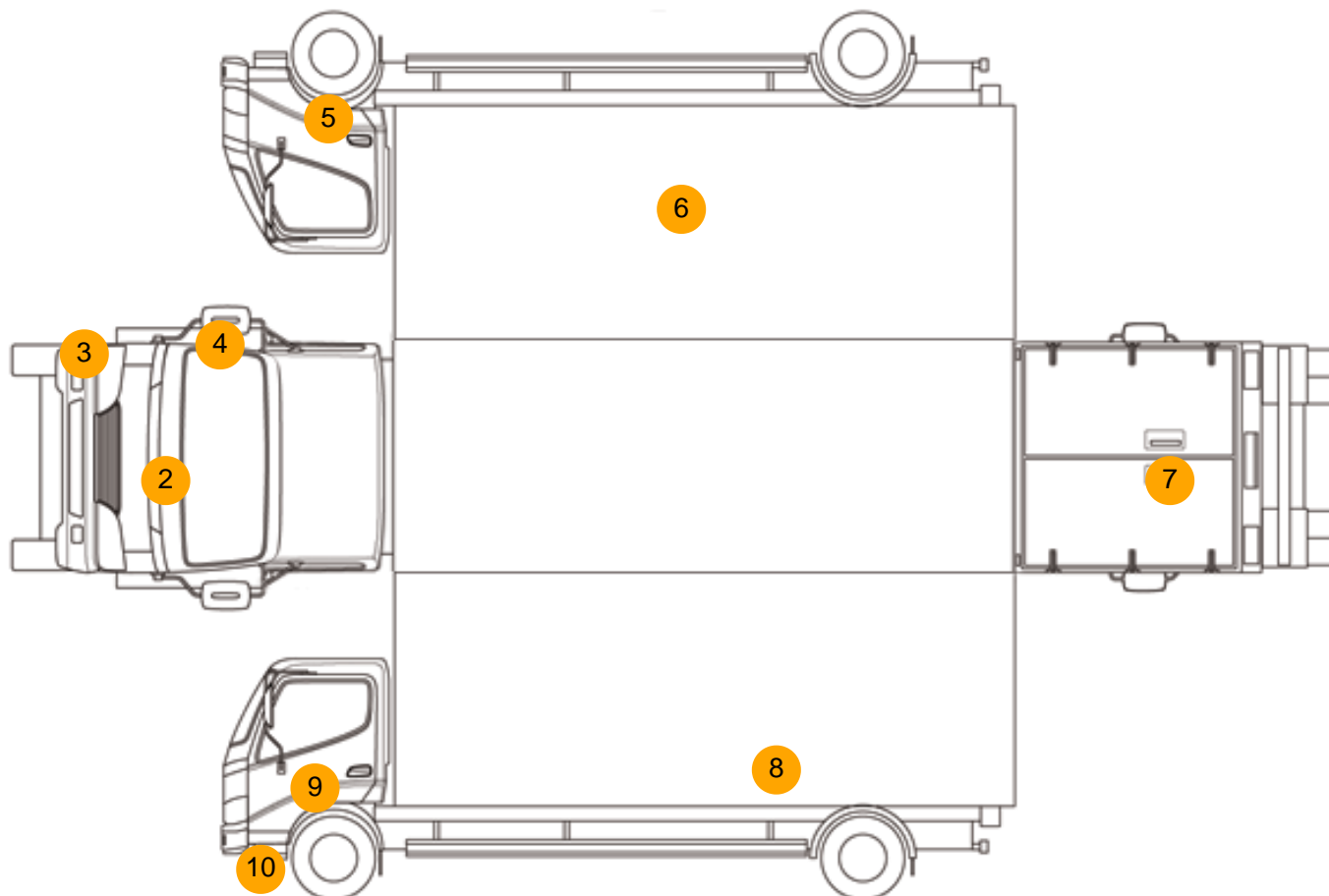
- Bluetooth connection
- Drivers airbag
- Cruise control
- Cloth seat trim
- Radio/CD
- Front electric windows

Photos





Condition Check



Damage Photos



1: Seat Base Cover osf
Torn
Over 3mm



2: Bonnet
Chipped
Multiple Chips



3: Bumper Front Moulding
Scuffed (Unpainted)
Over 100mm



4: Wing osf
Scratched
Over 25mm Thru Paint



5: Door osf
Dented
With Paint Damage



6: Qtr Panel osr
Dented
With Paint Damage



7: Tailgate
Rusted
UpTo 5mm



8: Qtr Panel nsr
Dented
With Paint Damage



9: Door osf
Dented
2 Or Less UpTo 10mm



10: Door Moulding nsf
Scuffed (Unpainted)
Over 100mm

Interior

Carpet Condition		Average	Upholstery Condition		Average
Seat Condition		Average	Odour		-
Engine Runs	OK		Gearbox 1st and Reverse Test	OK	
Brakes	OK		Clutch Slip Test from Static	OK	
Turbo Boosting	OK		Gearbox Static Gear Selection (engine running)	OK	
Parking Brake	OK		No Excessive Smoking	OK	
EML light illuminated	OK		Oil warning light illuminated	OK	
Airbag light illuminated	OK		DPF light illuminated	OK	
ABS light illuminated	OK		Service indicator light illuminated	OK	
Windows	OK		Radio	OK	
			Steering	OK	