

VEHICLE INSPECTION REPORT

PJ69XEO

Daf LF 260

Inspection

Serious Damage? No

Vehicle

VAT Plus VAT

V5 Present

Details

Reg. date	14/01/2020	Body Style	Fridge Box	Gearbox	AUTOMATIC
Year	2020	MOT Due	31/03/2026	Axle Combi	4x2
Mileage	342,910 Km Warranted	CAP Clean	£15,400.00	Rear Suspension	Steel
Fuel Type	DIESEL	CAP Average	£14,600.00	Rear Doors	Barn
Colour	WHITE	CAP Below	£12,700.00	Tail Lift	Tuckaway
VIN	XLRAEL3700L491885	Cab Type	DAY CAB		

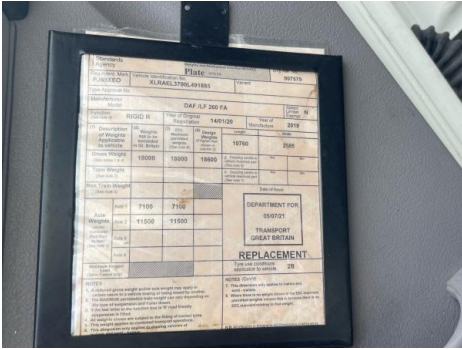
BRAKES WOUND OFF CARRIER SUPRA 1150 MT UNIT, STANDBY PLUG

Tyres

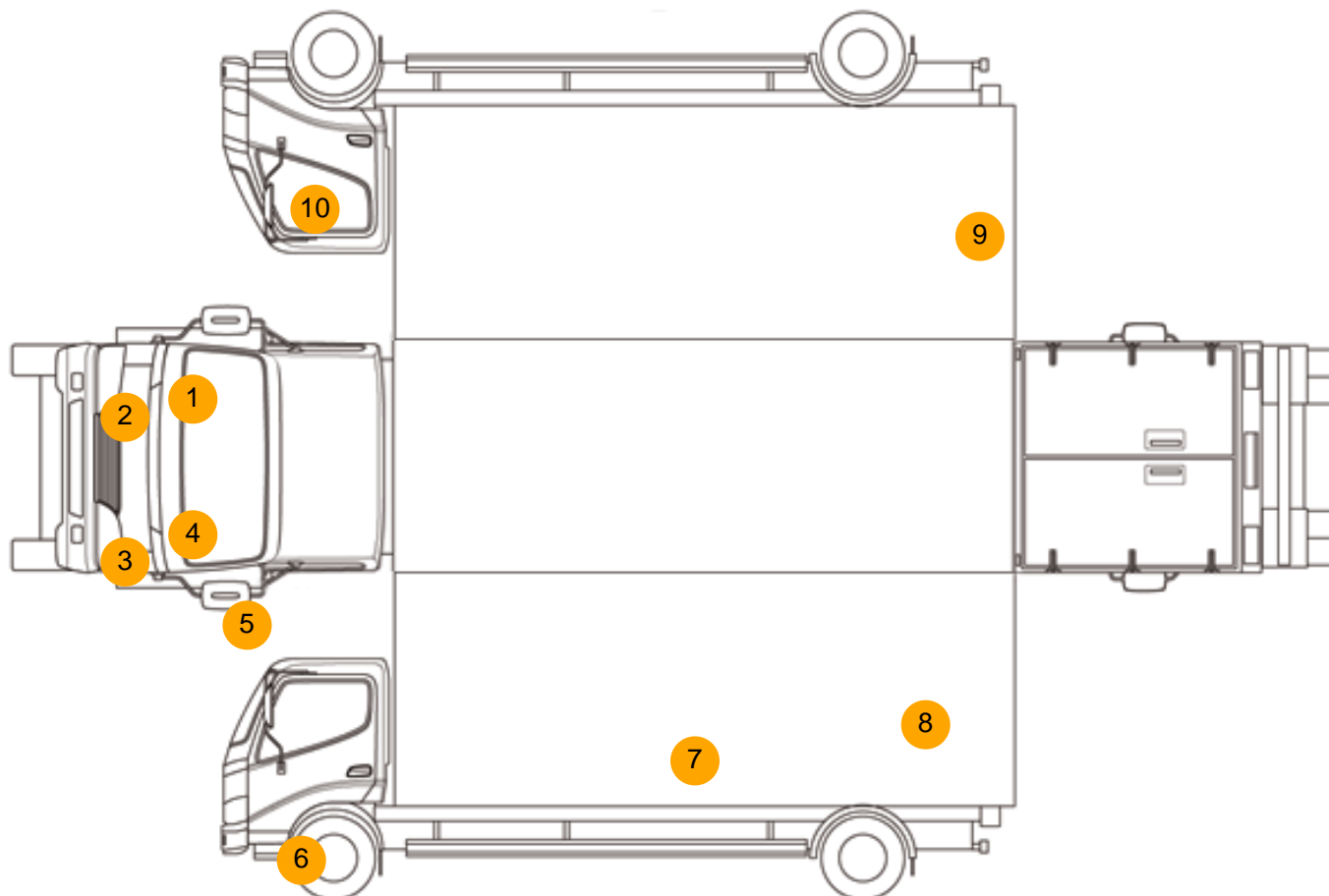
NSF	NSI1	NSI2	NSI3	NSI4
OSF	OSI1	OSI2	OSI3	OSI4
Spare	NSO1	NSO2	NSO3	NSO4
	OSO1	OSO2	OSO3	OSO4

Photos





Condition Check



Damage Photos



1: Wing osf
Scratched
UpTo 25mm Thru Paint



2: Bumper Front
Chipped
Multiple Chips



3: Bumper Front
Scratched
25 to 100mm Thru Paint



4: Bonnet
Scratched
UpTo 25mm Thru Paint



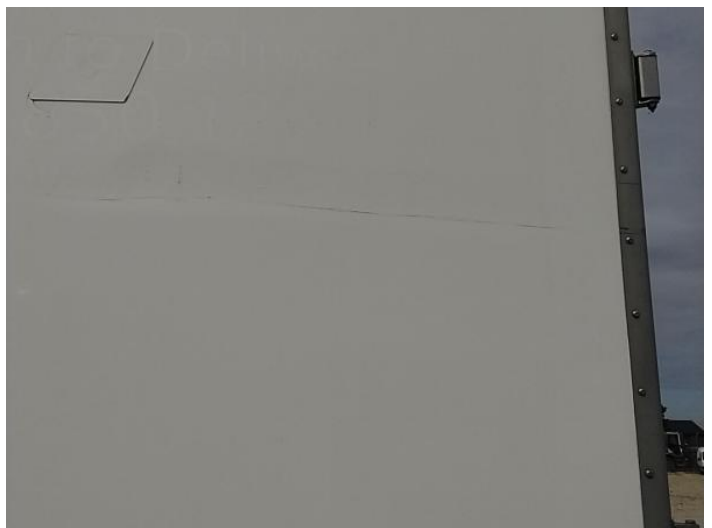
5: Door Mirror Assy nsf
Scuffed (Unpainted)
UpTo 100mm



6: Other
N/A
N/A



7: Qtr Panel nsr
Cracked
Replace



8: Qtr Panel nsr
Scratched
Over 25mm Not Thru Paint



9: Qtr Panel osr
Scratched
Over 25mm Not Thru Paint



10: Door Mirror Assy osf
Scuffed (Unpainted)
UpTo 100mm



11: Seat Base Cover osf
Torn
Over 3mm



12: Seat Base Cover osf
Burn
Over 3mm

Interior

Carpet Condition -
Seat Condition -

Upholstery Condition -
Odour -

Engine Runs	OK	Gearbox 1st and Reverse Test	OK
Brakes	OK	Clutch Slip Test from Static	OK
Parking Brake	OK	Gearbox Static Gear Selection (engine running)	OK
		No Excessive Smoking	OK
EML light illuminated	OK	Oil warning light illuminated	OK
Airbag light illuminated	OK	DPF light illuminated	OK
ABS light illuminated	OK	Service indicator light illuminated	OK