

VEHICLE INSPECTION REPORT

DG16DWJ

Man TGS 26.360

Inspection

Serious Damage? No

Vehicle

VAT Plus VAT

V5 To Follow

Details

Reg. date	31/03/2016	VIN	WMA18SZZ8GW214481	Axle Combi	6x2
Year	2016	Body Style	Curtainside	Rear Suspension	Air
Mileage	499,474 Km Warranted	MOT Due	31/10/2025	Rear Doors	Barn
Fuel Type	Diesel	Cab Type	DAY CAB		
Colour	BLUE	Gearbox	MANUAL		

REAR LIFT, FORKLIFT BRACKETS

Tyres

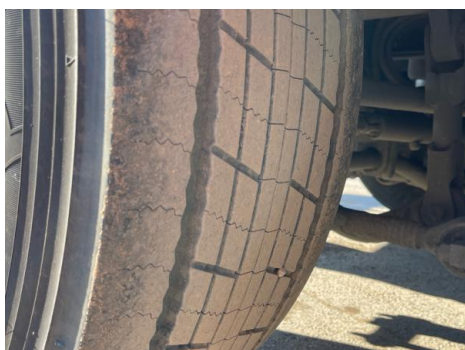
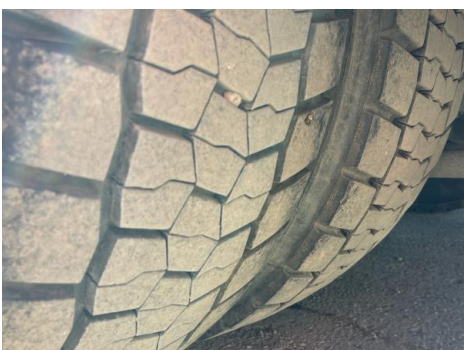
NSF	NSI1	NSI2	NSI3	NSI4
OSF	OSI1	OSI2	OSI3	OSI4
Spare	NSO1	NSO2	NSO3	NSO4
	OSO1	OSO2	OSO3	OSO4

Features

- Cruise control
- Park assist camera
- Radio/CD
- Front electric windows
- Central locking
- Cloth seat trim

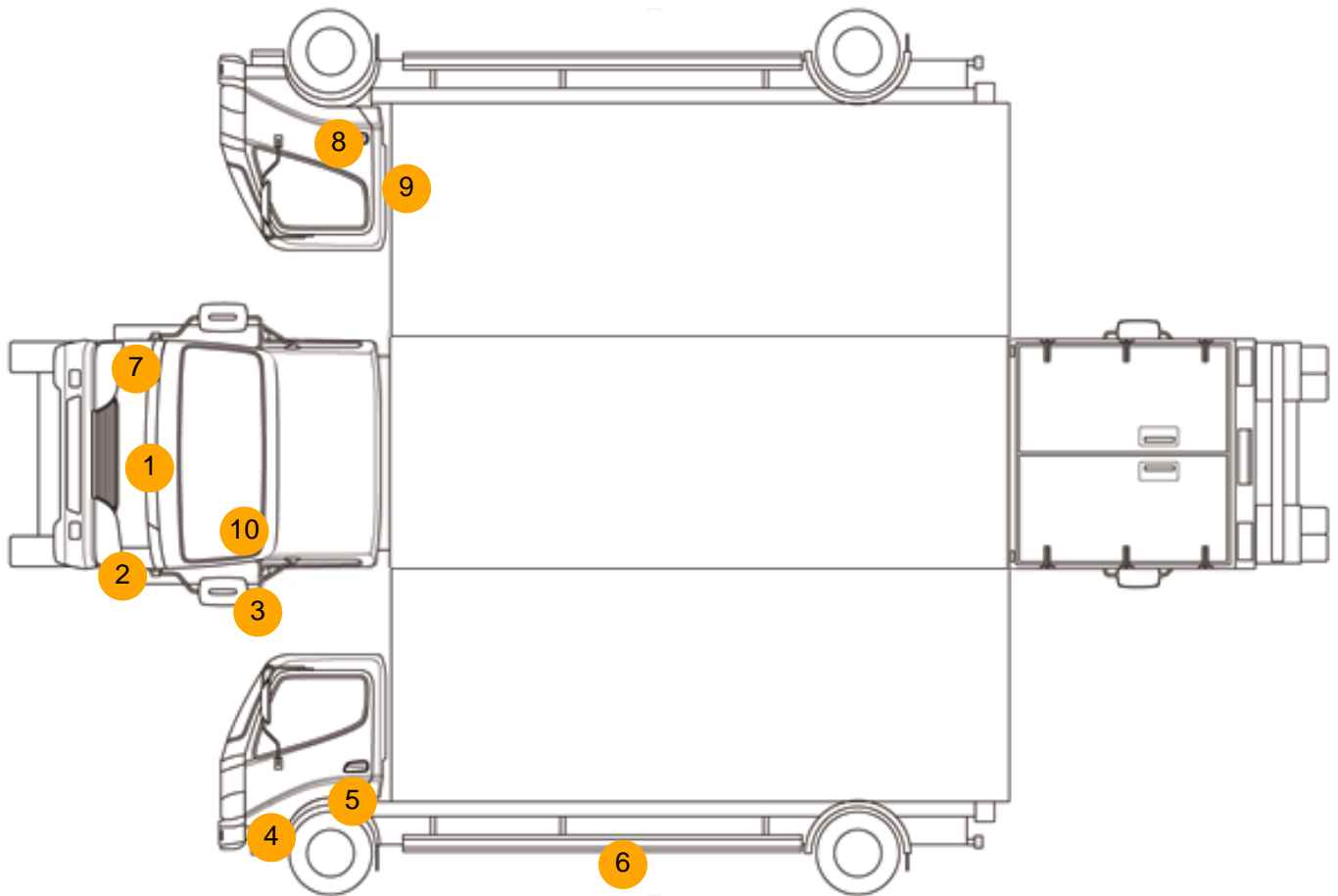
Photos







Condition Check



Damage Photos



1: Bonnet
Chipped
Multiple Chips



2: Panel Front
Scratched
Over 25mm Not Thru Paint



3: Door Mirror Assy nsf
Broken
Replace



4: Bumper Front Moulding
Broken
Replace



5: Wing nsf
Scratched
Over 25mm Thru Paint



6: Qtr Panel Moulding ns
Scuffed (Unpainted)
Over 100mm



7: Bumper Front
Scratched
Over 100mm Thru Paint



8: Wing osf
Scratched
Over 25mm Thru Paint



9: Door osf
Chipped
Multiple Chips



10: Screen Front
Chipped
Over 10mm



11: Door Pad osf
Broken
Replace

Interior

Carpet Condition	OK	Upholstery Condition	Poor
Seat Condition	OK	Odour	-
Engine Runs	OK	No Excessive Smoking	OK
EML light illuminated	OK	DPF light illuminated	OK
ABS light illuminated	OK		