

VEHICLE INSPECTION REPORT

PK70EUA

Daf LF 180

Inspection

Serious Damage? No

Vehicle

VAT Plus VAT

V5 Present

Details

Reg. date	27/10/2020	VIN	XLRAEL1500L496384	Axle Combi	4x2
Year	2020	Body Style	Fridge Box	Rear Suspension	Steel
Mileage	256,332 Km Warranted	MOT Due	30/11/2025	Rear Doors	Barn
Fuel Type	Diesel	Cab Type	DAY CAB		
Colour	WHITE	Gearbox	AUTOMATIC		

FRIGOBLOCK UT XARIOS 600 UNIT, STANDBY PLUG

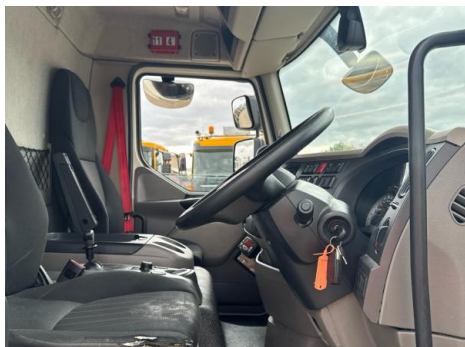
Tyres

NSF	NSI1	NSI2	NSI3	NSI4
OSF	OSI1	OSI2	OSI3	OSI4
Spare	NSO1	NSO2	NSO3	NSO4
	OSO1	OSO2	OSO3	OSO4

Features

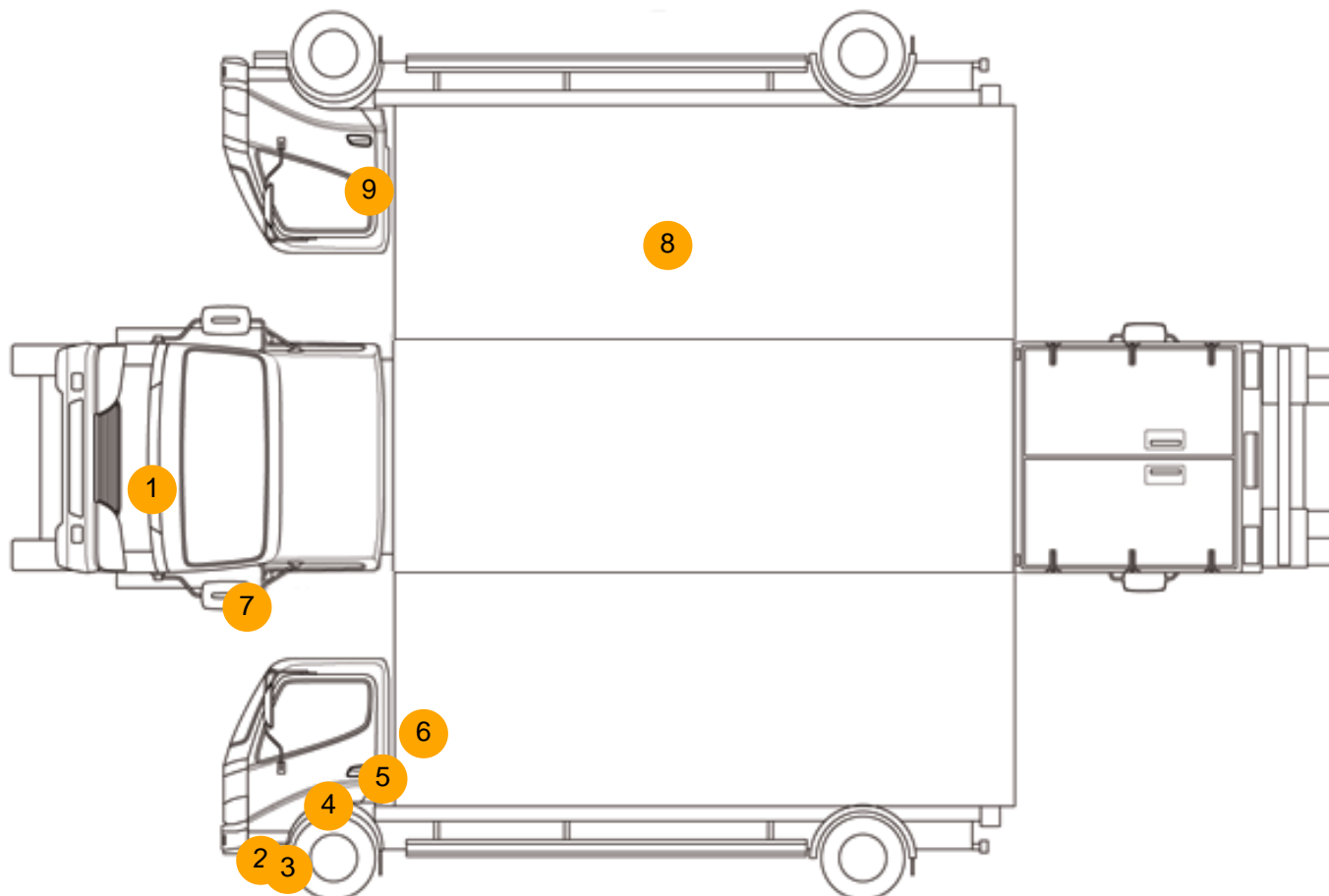
- Bluetooth connection
- Cruise control
- Digital radio
- Front electric windows
- Central locking
- Cloth seat trim

Photos





Condition Check



Damage Photos



1: Bonnet
Scratched
Over 25mm Thru Paint



2: Bumper Front
Scratched
Over 100mm Thru Paint



3: Wing nsf
Cracked
Replace



4: Door nsf
Dented
With Paint Damage



5: Door nsf
Scratched
Over 25mm Thru Paint



6: Qtr Panel nsr
Scratched
Over 25mm Thru Paint



7: Door Mirror Glass ns
Broken
Replace



8: Qtr Panel osr
Cracked
Replace



9: Door osf
Dented
With Paint Damage



10: Door Pad osf
Soiled
Heavy



11: Seat Base Cover osf
Torn
Over 3mm

Interior

Carpet Condition	OK	Upholstery Condition	Poor
Seat Condition	Poor	Odour	-
Engine Runs	OK	No Excessive Smoking	OK
EML light illuminated	OK	DPF light illuminated	OK
ABS light illuminated	OK		