

# VEHICLE INSPECTION REPORT

**EU67WVV**

## Scania P 410

### Inspection

Serious Damage? No

### Vehicle

VAT Plus VAT

V5 Buyer To Apply

### Details

Reg. date 18/10/2017

Year 2017

Mileage 360,079 Km Not Warranted

Fuel Type Diesel

Colour WHITE

VIN YS2P8X40005478208

Body Style Tipper

Cab Type DAY CAB

Gearbox AUTOMATIC

Axle Combi 8x4

Rear Suspension Steel

BOWELD STEEL BODY, EDBRO TIPPING GEAR, SHEETING SYSTEM

### Tyres

NSF	NSI1	NSI2	NSI3	NSI4
OSF	OSI1	OSI2	OSI3	OSI4
Spare	NSO1	NSO2	NSO3	NSO4
	OSO1	OSO2	OSO3	OSO4

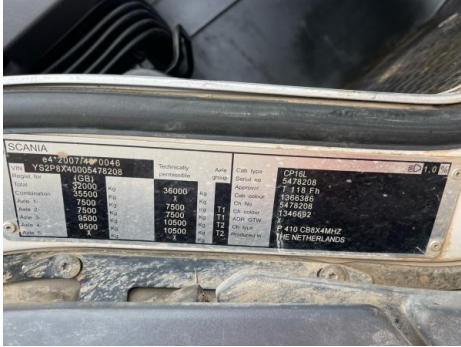
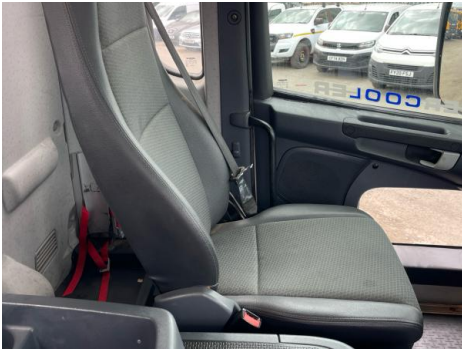
## Features

- Bluetooth connection
- Auxiliary input socket
- Front electric windows
- Cruise control
- Digital radio
- Central locking
- Navigation system
- Radio/CD
- Cloth seat trim
- Park assist camera
- Air conditioning

## Photos



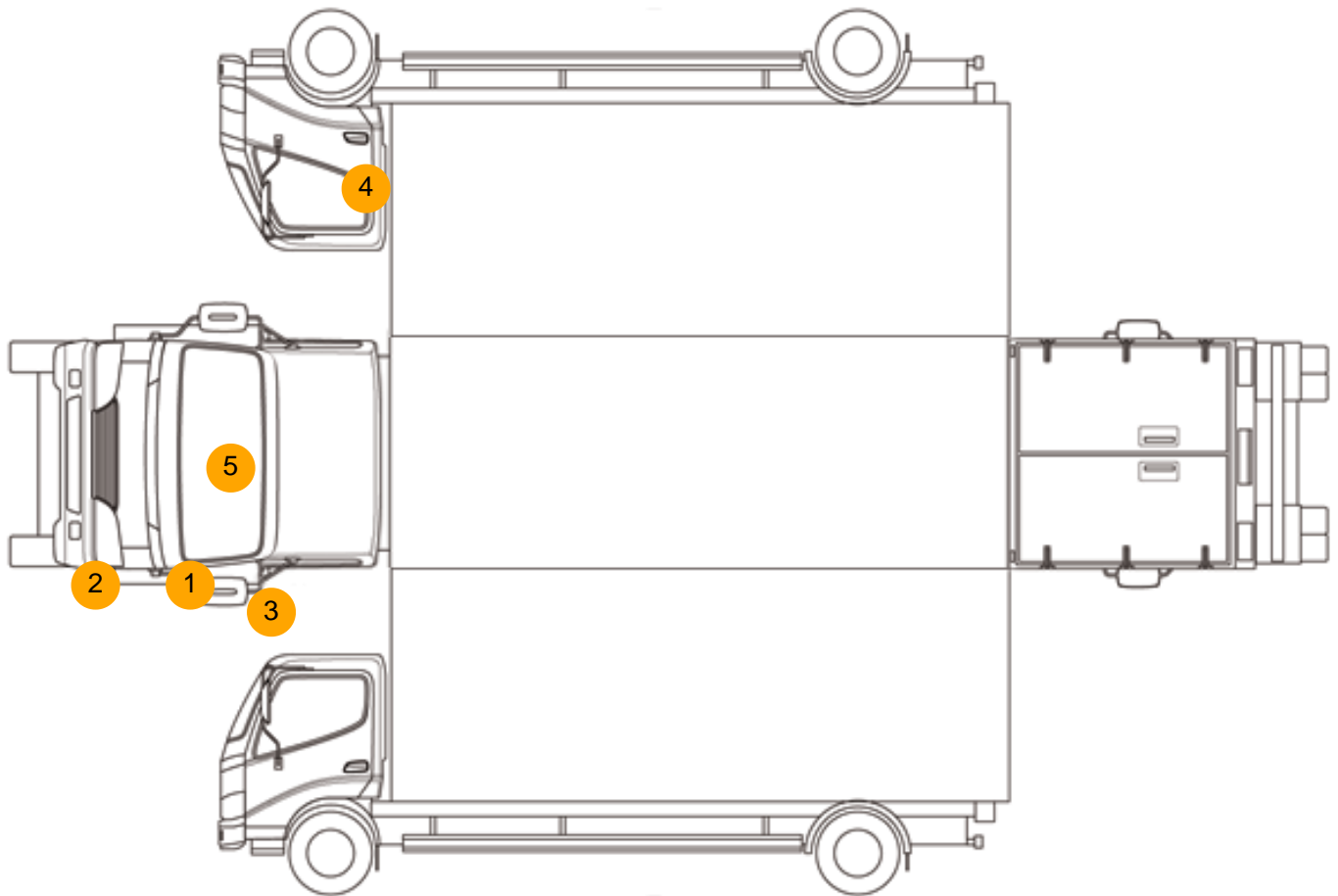








## Condition Check



## Damage Photos



1: Panel Front  
Cracked  
Replace



2: Bumper Front  
Dented  
With Paint Damage





3: Door Mirror Glass ns  
Broken  
Replace



4: Door osf  
Dented  
With Paint Damage



5: Screen Front  
Chipped  
Over 10mm

**Interior**

<b>Carpet Condition</b>	OK	<b>Upholstery Condition</b>	OK
<b>Seat Condition</b>	OK	<b>Odour</b>	-
Engine Runs	OK	No Excessive Smoking	OK
EML light illuminated	OK	DPF light illuminated	OK
ABS light illuminated	OK		