

VEHICLE INSPECTION REPORT

DK67VTY

Man TGM 18.250

Inspection

Serious Damage? No

Vehicle

VAT Plus VAT

V5 To Follow

Details

Reg. date	15/09/2017	Colour	BLUE	Cab Type	DAY CAB
Year	2017	VIN	WMAN08ZZ4HY364718	Gearbox	MANUAL
Mileage	169,306 Km Warranted	Body Style	Dropside & Crane	Axle Combi	4x2
Fuel Type	DIESEL	MOT Due	31/07/2026	Rear Suspension	Steel

SERVICE SCHEDULE LIST AVAILABLE, HMF 1420K-RC REMOTE CRANE (YEAR 2017), SURROUND CAMERA SYSTEM

Tyres

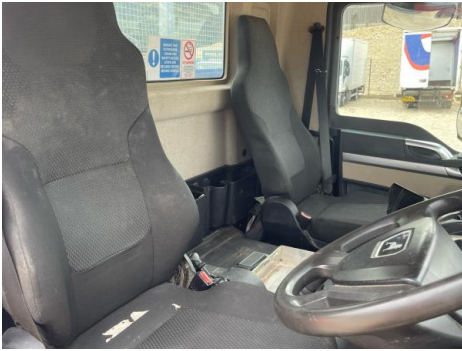
NSF	NSI1	NSI2	NSI3	NSI4
OSF	OSI1	OSI2	OSI3	OSI4
Spare	NSO1	NSO2	NSO3	NSO4
	OSO1	OSO2	OSO3	OSO4

Features

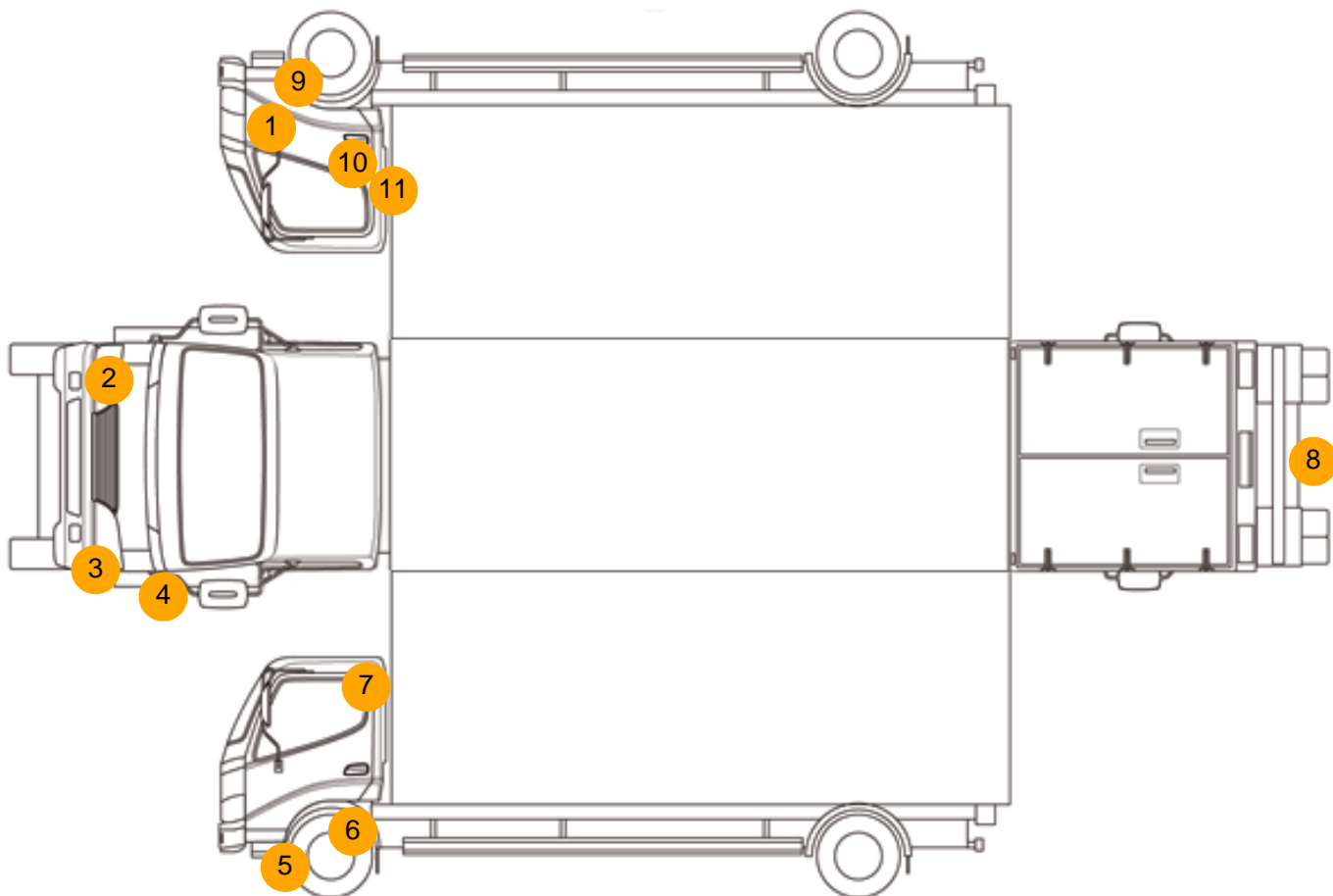
- Park assist camera

Photos





Condition Check



Damage Photos



1: Other
N/A
N/A



2: Bumper Front Moulding
Scuffed (Unpainted)
UpTo 100mm



3: Bumper Front Moulding
Scuffed (Unpainted)
UpTo 100mm



4: Wing nsf
Scratched
UpTo 25mm Thru Paint



5: Other
N/A
N/A



6: Other
N/A
N/A



7: Door Mirror Assy nsf
Broken
Replace



8: Bumper Rear
Rusted
Over 5mm



9: Other
N/A
N/A



10: Door osf
Scratched
UpTo 25mm Thru Paint



11: Door osf
Chipped
Edge Chip



12: Seat Base Cover osf
Holed
Over 3mm



13: Door Pad osf
Broken
Replace

Interior

Carpet Condition	Average	Upholstery Condition	Average
Seat Condition	Average	Odour	-
Engine Runs	OK	Gearbox 1st and Reverse Test	OK
Brakes	OK	Clutch Slip Test from Static	OK
Parking Brake	OK	Gearbox Static Gear Selection (engine running)	OK
		No Excessive Smoking	OK
EML light illuminated	OK	Oil warning light illuminated	OK
Airbag light illuminated	OK	DPF light illuminated	OK
ABS light illuminated	OK	Service indicator light illuminated	OK