

## VEHICLE INSPECTION REPORT

**DA69WWN**

### Isuzu N75 190

#### Inspection

Serious Damage? No

#### Vehicle

VAT Plus VAT

V5 Present

#### Details

Reg. date 18/12/2019

Year 2019

Mileage 173,520 Km Warranted

Fuel Type DIESEL

Colour WHITE

VIN JAANPR75HJ7104174

Body Style Flatbed

MOT Due 31/12/2025

Cab Type DAY CAB

Gearbox AUTOMATIC

Axle Combi 4x2

Rear Suspension Steel

\*WARNING LIGHTS ON DASH\*

#### Tyres

NSF NSI1

NSI2

NSI3

NSI4

OSF OSI1

OSI2

OSI3

OSI4

Spare NSO1

NSO2

NSO3

NSO4

OSO1

OSO2

OSO3

OSO4

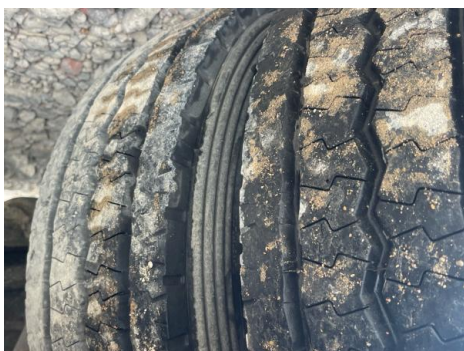
## Features

- Park assist camera

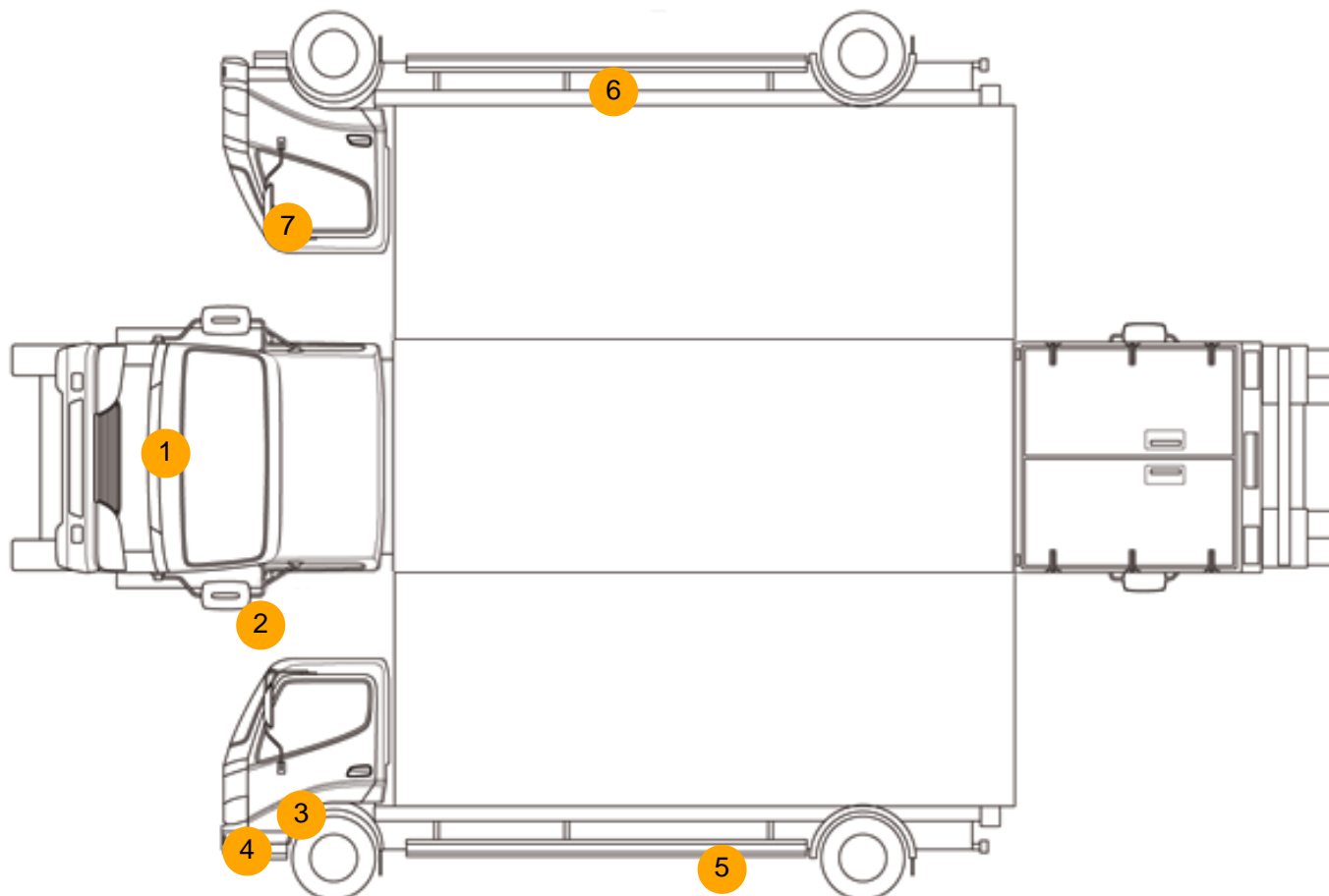
## Photos







## Condition Check



## Damage Photos



1: Bonnet  
Dented  
2 Or Less UpTo 10mm



2: Door Mirror Assy nsf  
Broken  
Replace





3: Door nsf  
Dented  
With Paint Damage



4: Bumper Front Moulding  
Scuffed (Unpainted)  
UpTo 100mm



5: Other  
N/A  
N/A



6: Other  
N/A  
N/A



7: Door Mirror Assy osf  
Scuffed (Unpainted)  
UpTo 100mm



8: Seat Base Cover osf  
Burn  
Over 3mm

## Interior

Carpet Condition		Average	Upholstery Condition		Average
Seat Condition		Average	Odour		-
Engine Runs	OK		Gearbox 1st and Reverse Test	OK	
Brakes	OK		Clutch Slip Test from Static	OK	
Parking Brake	OK		Gearbox Static Gear Selection (engine running)	OK	
			No Excessive Smoking	OK	
EML light illuminated	OK		Oil warning light illuminated	OK	
Airbag light illuminated	OK		DPF light illuminated	OK	
ABS light illuminated	OK		Service indicator light illuminated	Fault	