

# VEHICLE INSPECTION REPORT

**PE63NKA**

## Daf LF 45.140

### Inspection

Serious Damage? No

### Vehicle

VAT Plus VAT

V5 To Follow

### Details

Reg. date 13/11/2013

Body Style Box Van

Axle Combi 4x2

Year 2013

Keys 1

Steering Combi Steer

Mileage 952,493 Km Warranted

MOT Due 30/09/2025

Rear Suspension Steel

Fuel Type Diesel

Gearbox MANUAL

Tail Lift Cantilever

Colour RED

Gears 5

VIN XLRAE45FF0L432614

Doors 2

\* COLLECTED AS NON RUNNER CORRISION \*

STARTS AND DRIVES

\* WARNING LIGHT ON DASH \*

### Tyres

NSF NSI1

NSI2

NSI3

NSI4

OSF OSI1

OSI2

OSI3

OSI4

Spare NSO1

NSO2

NSO3

NSO4

OSO1

OSO2

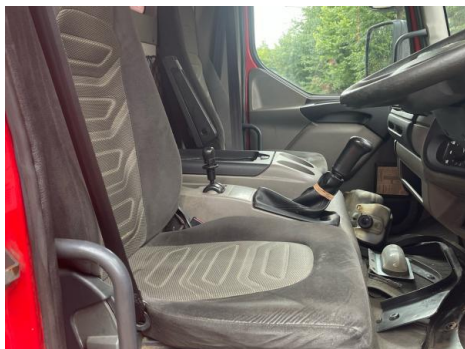
OSO3

OSO4

## Features

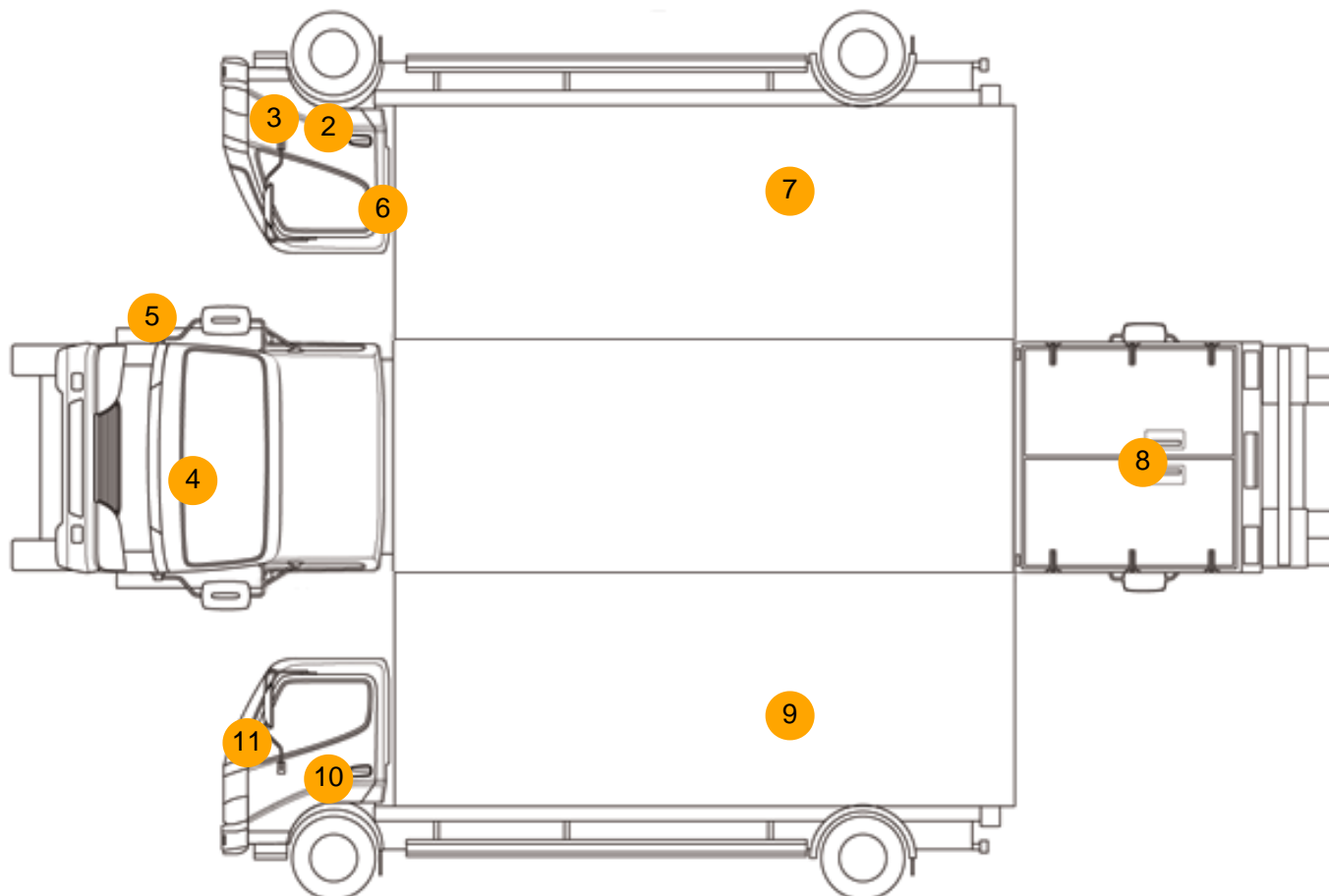
- Radio/CD
- Front electric windows
- Cloth seat trim

## Photos





## Condition Check



## Damage Photos



1: Carpets Front  
Torn  
Over 10mm



2: Sill os  
Rusted  
Over 5mm



3: Door Moulding osf  
Scuffed (Unpainted)  
Over 100mm



4: Bonnet  
Chipped  
Multiple Chips



5: Wing osf  
Chipped  
Multiple Chips



6: Door osf  
Dented  
Over 30mm



7: Qtr Panel osr  
Dented  
With Paint Damage



8: Tailgate  
Rusted  
Over 5mm



9: Qtr Panel nsr  
Dented  
With Paint Damage



10: Door nsf  
Chipped  
Over 5mm



11: Door Mirror Assy nsf  
Missing  
Replace

**Interior**

Carpet Condition		Upholstery Condition	
Seat Condition		Odour	
Poor	Poor	Poor	-
Engine Runs	OK	Gearbox 1st and Reverse Test	OK
Brakes	OK	Clutch Slip Test from Static	OK
Turbo Boosting	OK	Gearbox Static Gear Selection (engine running)	OK
Parking Brake	OK	No Excessive Smoking	OK
EML light illuminated	Fault	Oil warning light illuminated	OK
Airbag light illuminated	OK	DPF light illuminated	OK
ABS light illuminated	Fault	Service indicator light illuminated	OK

Windows

OK

Radio

OK

Steering

OK