

VEHICLE INSPECTION REPORT

DK17LVM

Man TGS 26.360

Inspection

Serious Damage? No

Vehicle

VAT Plus VAT

V5 To Follow

Details

Reg. date	20/07/2017	VIN	WMA18SZZ8HM749193	Axle Combi	6x2
Year	2017	Body Style	Dropside & Crane	Steering Combi	Mid-Lift
Mileage	217,993 Km Warranted	MOT Due	Expired	Rear Suspension	Air
Fuel Type	Diesel	Cab Type	DAY CAB		
Colour	BLUE	Gearbox	MANUAL		

WARNING LIGHT ON DASH, MOT HISTORY INCORRECTLY RECORDED IN MILES/KM HMF 1420K-RC
REMOTE CRANE (YEAR 2017), SERVICE SCHEDULE LIST & LAST CRANE TEST AVAILABLE

Tyres

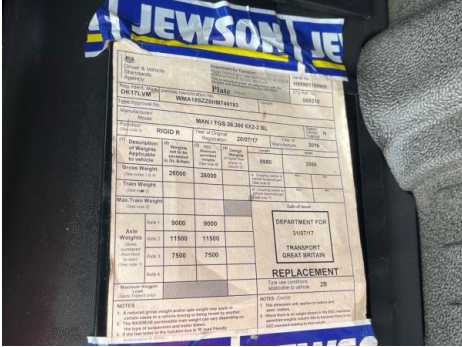
NSF	NSI1	NSI2	NSI3	NSI4
OSF	OSI1	OSI2	OSI3	OSI4
Spare	NSO1	NSO2	NSO3	NSO4
	OSO1	OSO2	OSO3	OSO4

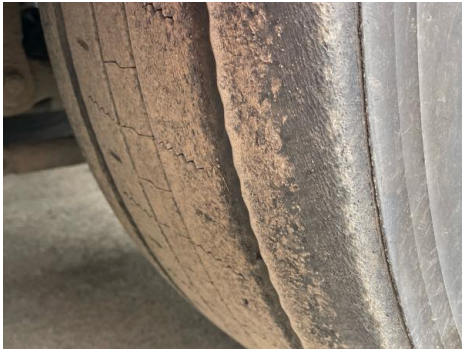
Features

- Bluetooth connection
- Cruise control
- Park assist camera
- Digital radio
- Front electric windows
- Central locking
- Cloth seat trim

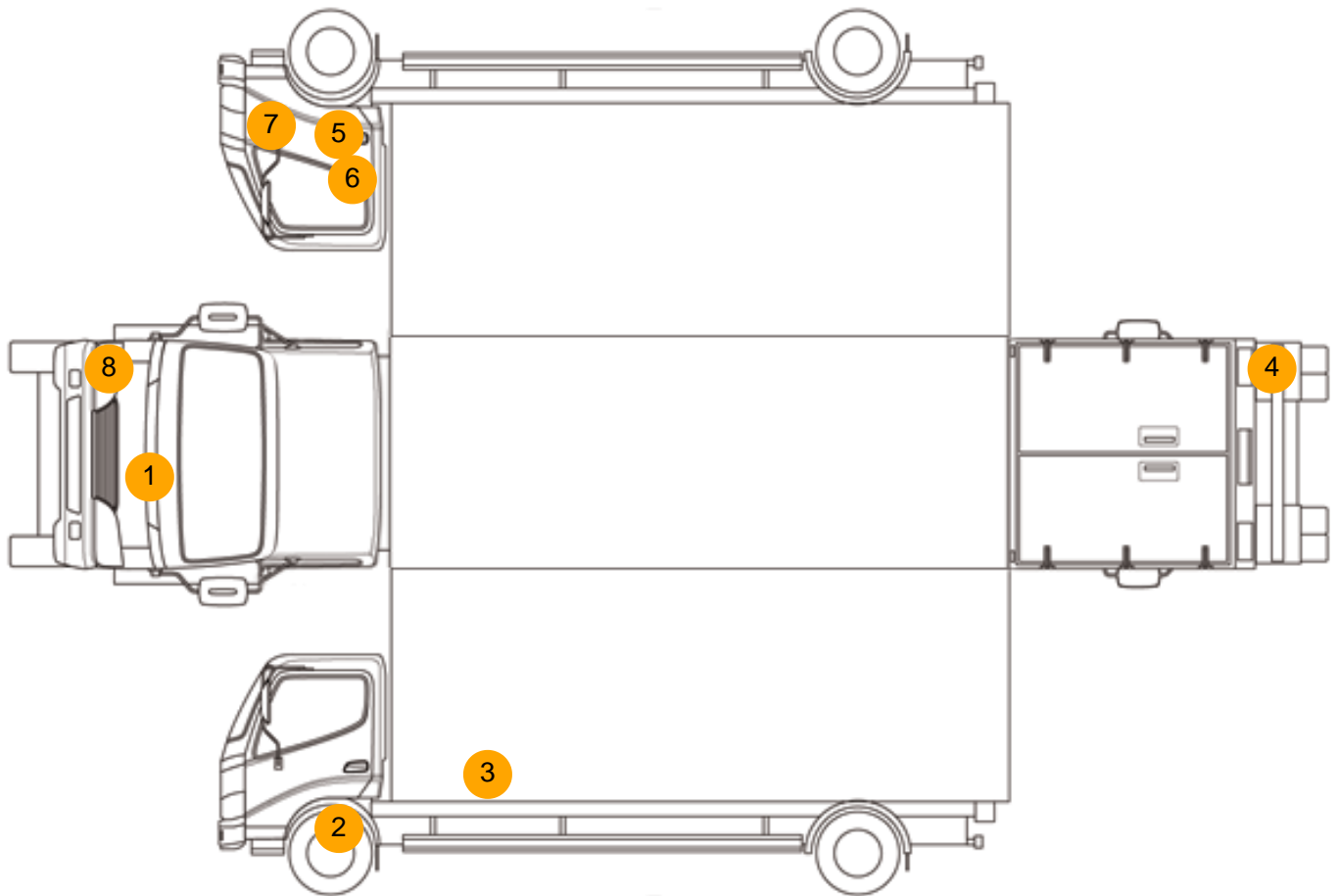
Photos







Condition Check



Damage Photos



1: Bonnet
Chipped
Multiple Chips



2: Wing nsf
Scratched
Over 25mm Thru Paint



3: Qtr Panel nsr
Hole
Over 10mm



4: Lamp osr
Broken
Replace



5: Door osf
Dented
With Paint Damage



6: Door osf
Dented
With Paint Damage



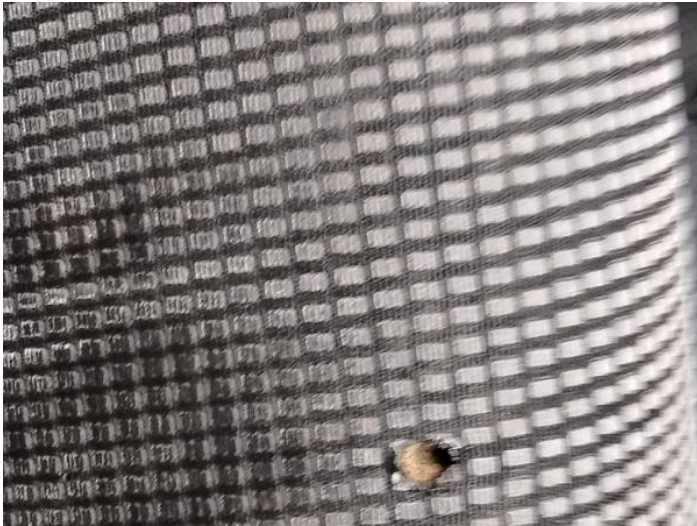
7: Wing osf
Cracked
Replace



8: Bumper Front
Scratched
Over 100mm Thru Paint



9: Door Pad osf
Broken
Replace



10: Seat Base Cover osf
Burn
Over 3mm



11: Fascia Panel
Soiled
Heavy



12: Dash Warning Lights
Displayed
No Action

Interior

Carpet Condition	OK	Upholstery Condition	Poor
Seat Condition	Poor	Odour	-
Engine Runs	OK	No Excessive Smoking	OK
EML light illuminated	Fault	DPF light illuminated	OK
ABS light illuminated	OK		