

VEHICLE INSPECTION REPORT

GF11JVV

Man TGS 32.360

Inspection

Serious Damage? No

Vehicle

VAT Plus VAT

V5 Present

Details

Reg. date	19/05/2011	Colour	BLUE	Cab Type	L CAB
Year	2011	VIN	WMA49SZZ9BM565883	Gearbox	AUTOMATIC
Mileage	Not Showing	Body Style	Vacuum Tanker	Axle Combi	8x4
Fuel Type	Diesel	MOT Due	Expired	Rear Suspension	Steel

MOT HISTORY INCORRECTLY RECORDED IN MILES/KM, WARNING LIGHTS ON DASH *LAST KNOWN MOT MILAGE 01/09/2023 - 470,787KM* WHALE 187,185L BODY, FULL BACK DOOR

Tyres

NSF	NSI1	NSI2	NSI3	NSI4
OSF	OSI1	OSI2	OSI3	OSI4
Spare	NSO1	NSO2	NSO3	NSO4
	OSO1	OSO2	OSO3	OSO4

Features

- Cruise control
- Park assist camera
- Digital radio
- Radio/CD
- Air conditioning
- Front electric windows
- Central locking
- Cloth seat trim

Photos

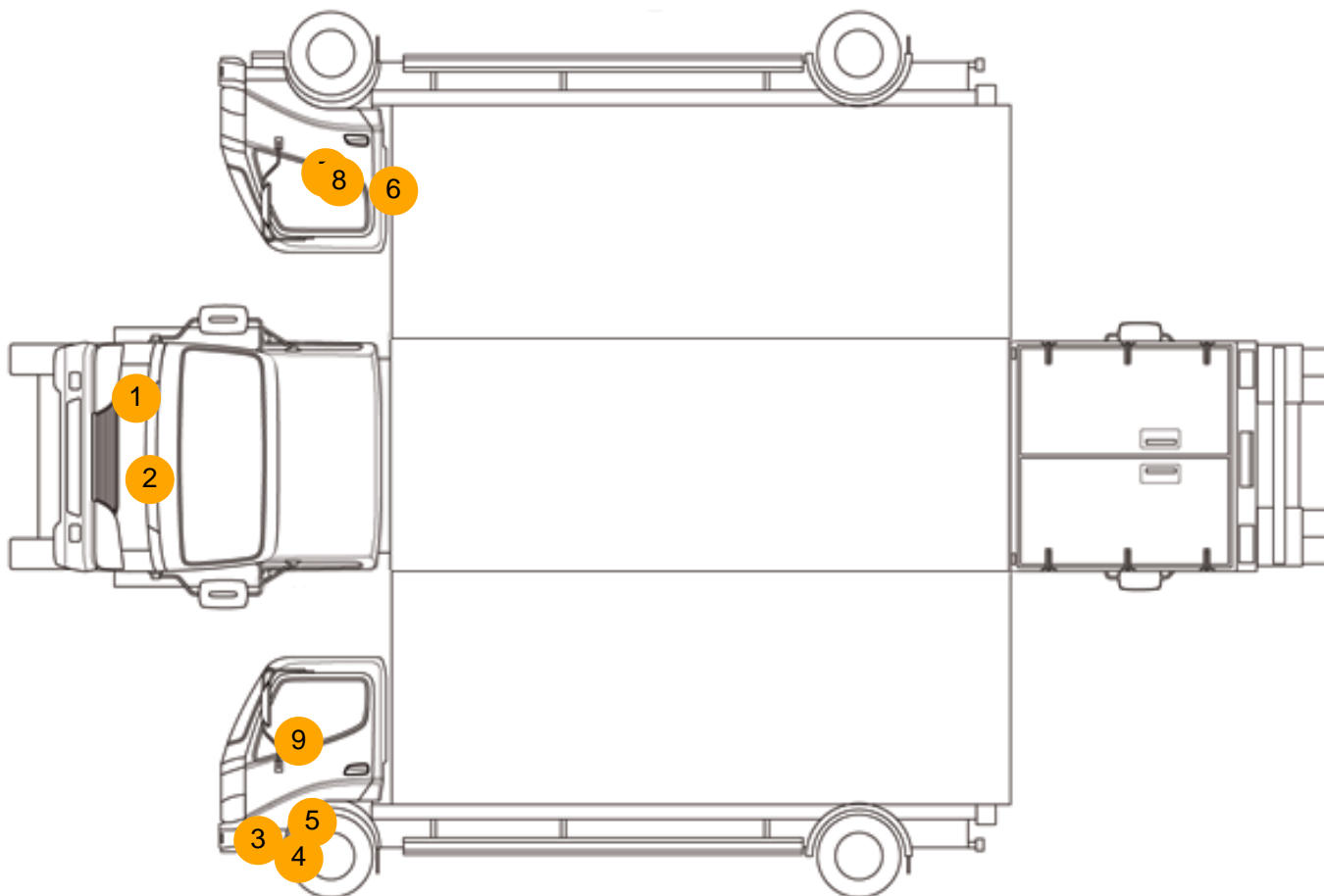








Condition Check



Damage Photos



1: Bumper Front
Rusted
Over 5mm



2: Bumper Front Grill
Broken
Replace



3: Bumper Front
Dented
With Paint Damage



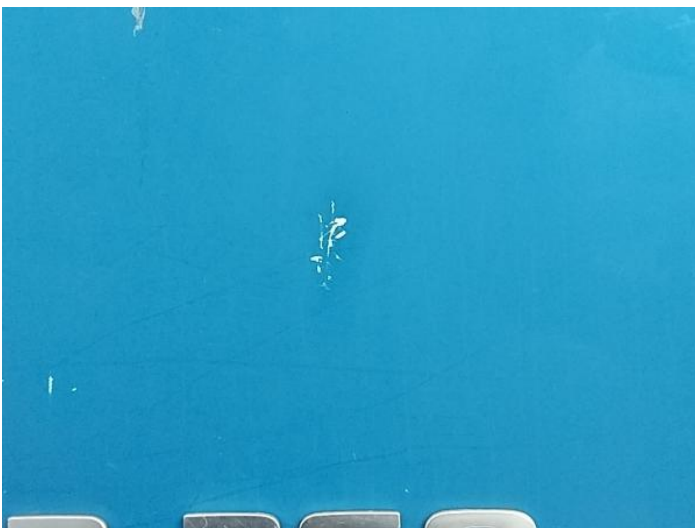
4: Moulding nsf Wing
Broken
Replace



5: Moulding nsf Wing
Broken
Replace



6: Door osf
Chipped
Multiple Chips



7: Door osf
Scratched
Over 25mm Thru Paint



8: Door osf
Dented
With Paint Damage



9: Door Mirror Assy nsf
Broken
Replace



10: Seat Base Cover osf
Torn
Over 3mm



11: Centre Console Front
Missing
Replace



12: Door Pad osf
Missing
Replace



13: Door Pad nsf
Missing
Replace

Interior

Carpet Condition	Average	Upholstery Condition	Poor
Seat Condition	Poor	Odour	-
Engine Runs	OK	Gearbox 1st and Reverse Test	OK
Brakes	OK	Clutch Slip Test from Static	OK
Turbo Boosting	OK	Gearbox Static Gear Selection (engine running)	OK
Parking Brake	OK	No Excessive Smoking	OK
EML light illuminated	Fault	Oil warning light illuminated	OK
Airbag light illuminated	OK	DPF light illuminated	OK
ABS light illuminated	Fault	Service indicator light illuminated	OK
Windows	OK	Radio	OK
		Steering	OK