

VEHICLE INSPECTION REPORT

SF16CLL

Vauxhall Movano 35 2.3 CDTi BiTurbo ecoFLEX 136ps

Inspection

Serious Damage? No

Vehicle

VAT Plus VAT

V5 Present

Details

Reg. date	18/08/2016	Body Style	Tipper Double Cab	Gearbox	MANUAL
Year	2016	Keys	1	Gears	6
Mileage	64,637 Miles Warranted	MOT Due	17/08/2026	Doors	2
Fuel Type	Diesel	CAP Clean	£5,400.00	Steering Combi	Standard Axle
Colour	WHITE	CAP Average	£4,500.00	Rear Suspension	Steel
VIN	W0LMSP4Y2GB108002	CAP Below	£3,350.00		

Tyres

NSF

NSR

OSF

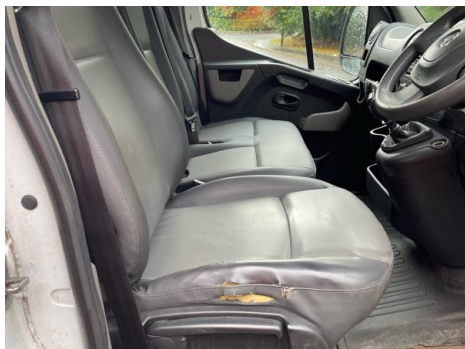
OSR

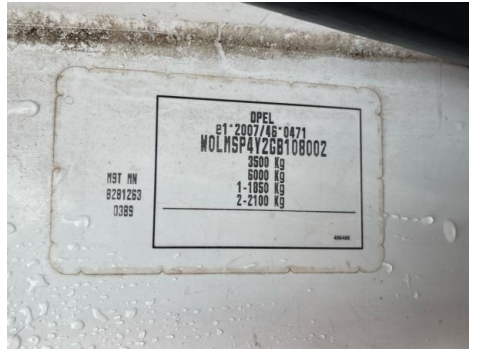
Spare

Features

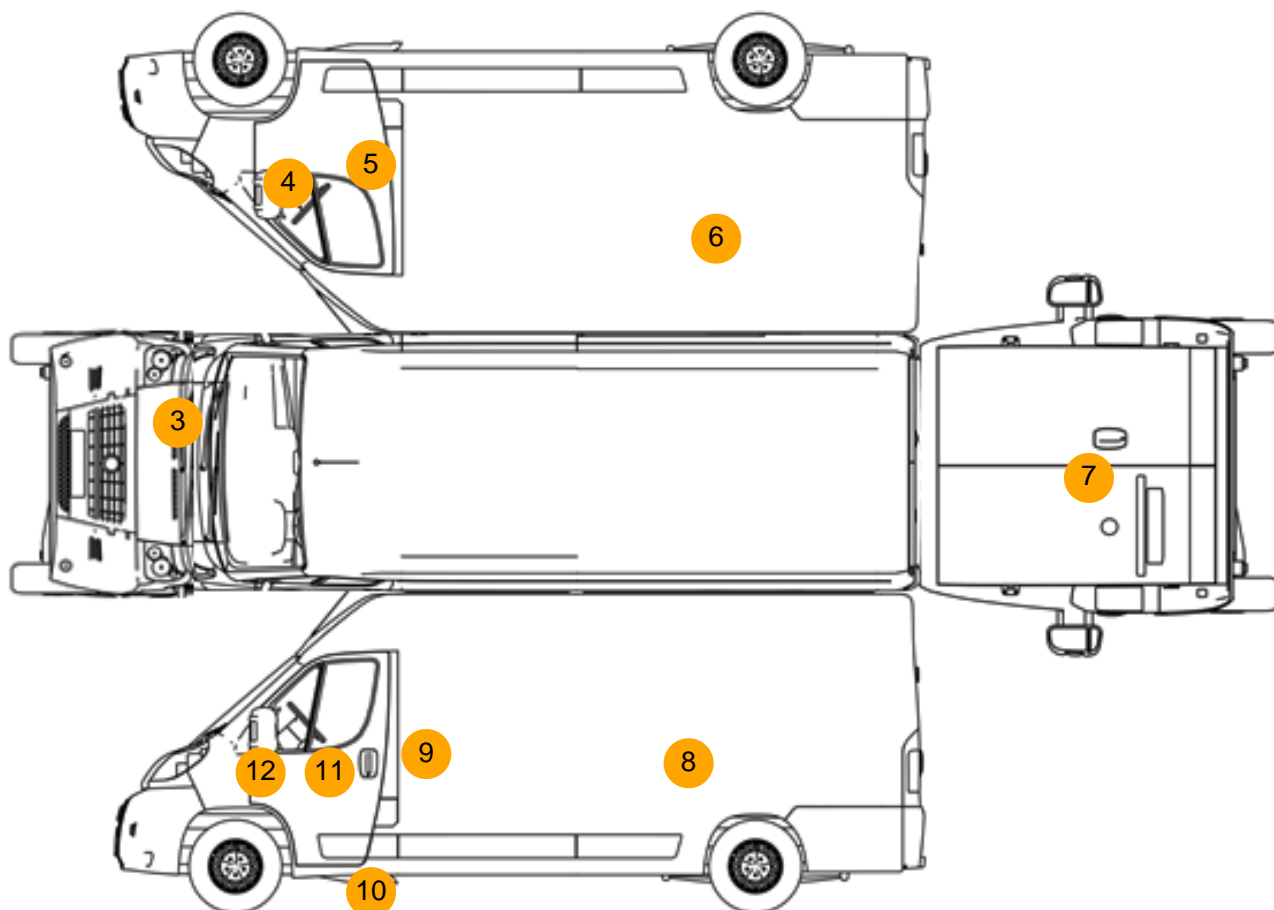
- Radio/CD
- Front electric windows
- Drivers airbag
- Central locking
- Cloth seat trim

Photos





Condition Check



Damage Photos



1: Seat Base Cover osf
Torn
Over 3mm



2: Sill os
Rusted
Over 5mm



3: Bonnet
Dented
Over 30mm



4: Wing osf
Dented
With Paint Damage



5: Door osf
Dented
With Paint Damage



6: Qtr Panel osr
Dented
With Paint Damage



7: Tailgate
Dented
Over 30mm



8: Qtr Panel nsr
Dented
With Paint Damage



9: D Post ns
Dented
Over 30mm



10: Sill ns
Dented
Over 30mm



11: Door osf
Dented
With Paint Damage



12: Wing nsf
Dented
With Paint Damage

Interior

Carpet Condition		Average		Upholstery Condition		Average	
Seat Condition		Poor		Odour		No	
Engine Runs		OK		Gearbox 1st and Reverse Test		OK	
Brakes		OK		Clutch Slip Test from Static		OK	
Turbo Boosting		OK		Gearbox Static Gear Selection (engine running)		OK	
Parking Brake		OK		No Excessive Smoking		OK	
EML light illuminated		OK		Oil warning light illuminated		OK	
Airbag light illuminated		OK		DPF light illuminated		OK	
ABS light illuminated		OK		Service indicator light illuminated		OK	

Windows

OK

Radio

OK

Steering

OK