

VEHICLE INSPECTION REPORT

SF16CMT

Vauxhall Movano 35 2.3 CDTi BiTurbo ecoFLEX 136ps

Inspection

Serious Damage? No

Vehicle

VAT Plus VAT

V5 Present

Details

Reg. date	18/07/2016	Body Style	Tipper Double Cab	Gearbox	MANUAL
Year	2016	Keys	1	Gears	6
Mileage	66,918 Miles Not Warranted	MOT Due	29/07/2026	Doors	2
Fuel Type	Diesel	CAP Clean	£5,325.00	Steering Combi	Standard Axle
Colour	WHITE	CAP Average	£4,450.00	Rear Suspension	Steel
VIN	W0LMSP4Y2GB107603	CAP Below	£3,300.00		

Tyres

NSF

NSR

OSF

OSR

Spare

Features

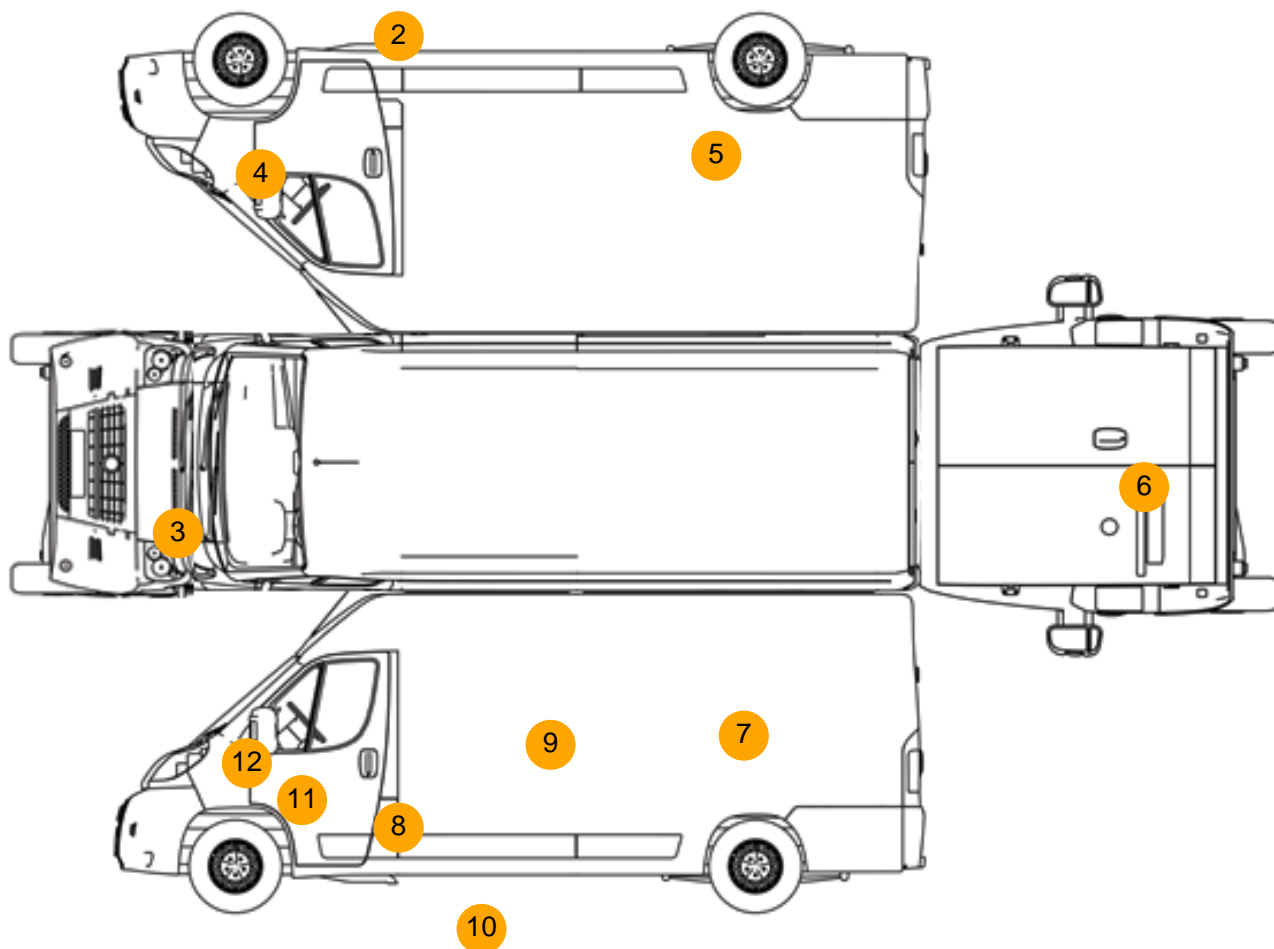
- Radio/CD
- Front electric windows
- Drivers airbag
- Central locking
- Cloth seat trim

Photos





Condition Check



Damage Photos



1: Seat Base Cover osf
Torn
Over 3mm



2: Sill os
Dented
Over 30mm



3: Bonnet
Dented
With Paint Damage



4: Wing osf
Dented
With Paint Damage



5: Qtr Panel osr
Dented
With Paint Damage



6: Tailgate
Dented
With Paint Damage



7: Qtr Panel nsr
Dented
With Paint Damage



8: D Post ns
Dented
Over 30mm



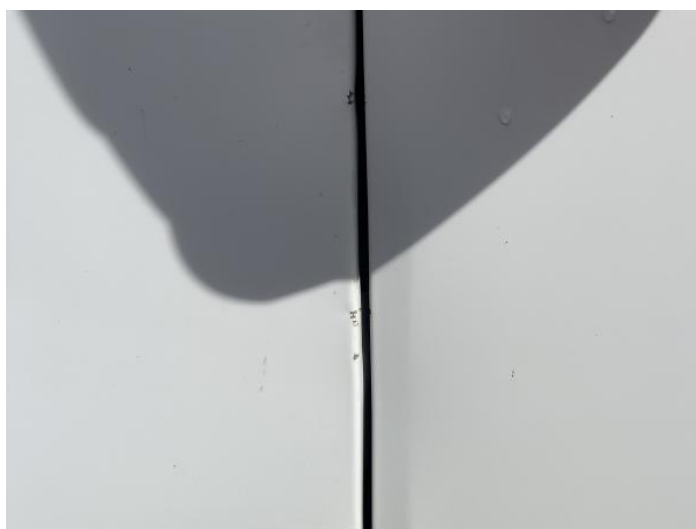
9: Door nsr
Dented
With Paint Damage



10: Sill ns
Rusted
Over 5mm



11: Door nsf
Dented
With Paint Damage



12: Wing nsf
Dented
Over 30mm

Interior

Carpet Condition		Average		Upholstery Condition		Average	
Seat Condition		Average		Odour		No	
Engine Runs		OK		Gearbox 1st and Reverse Test		OK	
Brakes		OK		Clutch Slip Test from Static		OK	
Turbo Boosting		OK		Gearbox Static Gear Selection (engine running)		OK	
Parking Brake		OK		No Excessive Smoking		OK	
EML light illuminated		OK		Oil warning light illuminated		OK	
Airbag light illuminated		OK		DPF light illuminated		OK	
ABS light illuminated		OK		Service indicator light illuminated		OK	

Windows	OK	Radio	OK
		Steering	OK