

VEHICLE INSPECTION REPORT

PG66UEH

DAF CF 440

Inspection

Serious Damage? No

Vehicle

VAT Plus VAT

V5 Present

Details

Reg. date 22/02/2017

Year 2017

Mileage 1,088,312 Km
Warranted

Fuel Type Diesel

Colour RED

VIN XLRTGM4100G147535

Body Style Tractor Unit

Service history Yes

Service documents Printout

MOT Due 30/09/2025

Cab Type SLEEPER CAB

Axle Combi 6x2

Steering Combi Mid-Lift Steer

Rear Suspension Air

COLLECTED AS NON RUNNER - WIRING FAULT

Tyres

NSF

NSI1

NSI2

NSI3

NSI4

OSF

OSI1

OSI2

OSI3

OSI4

Spare

NSO1

NSO2

NSO3

NSO4

OSO1

OSO2

OSO3

OSO4

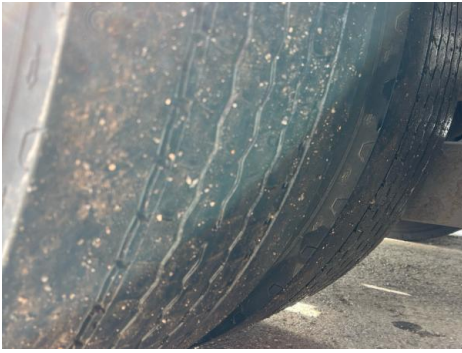
Features

- Cruise control
- Central locking
- Radio/CD
- Cloth seat trim
- Air conditioning
- Front electric windows

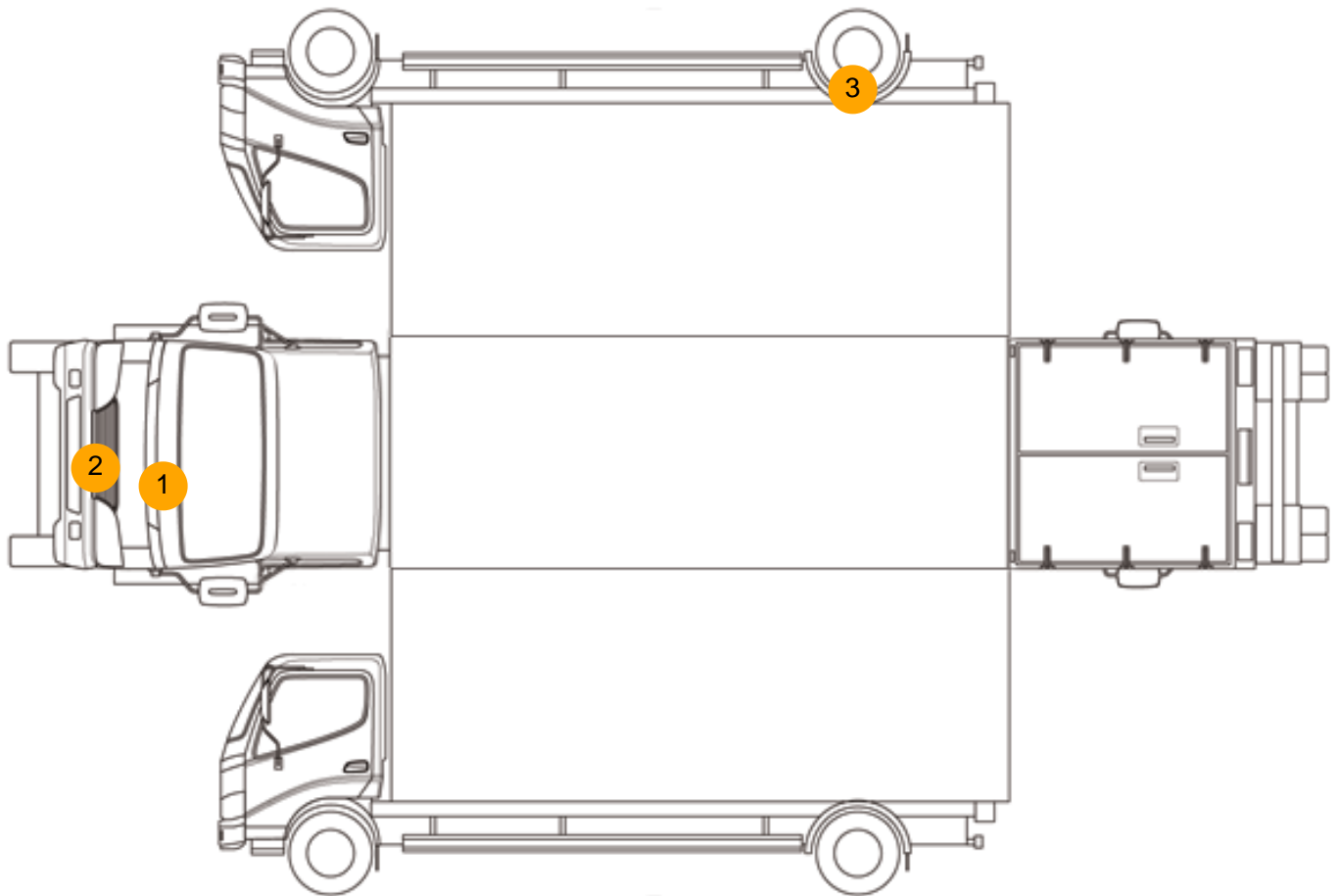
Photos







Condition Check



Damage Photos



1: Bonnet
Chipped
Multiple Chips



2: Bumper Front
Scratched
Over 100mm Thru Paint



3: Qtr Panel Moulding os
Missing
Replace



4: Carpets Front
Missing
Replace

Interior

Carpet Condition	Poor		Upholstery Condition	OK
Seat Condition	OK		Odour	-
Engine Runs	OK		No Excessive Smoking	OK
EML light illuminated	OK		DPF light illuminated	OK
ABS light illuminated	OK			