

VEHICLE INSPECTION REPORT

SH71GHX

Fiat Doblo CARGO 16V 1.6 MULTIJET

Inspection

Serious Damage? No

Vehicle

VAT Plus VAT

V5 Present

Details

Reg. date 31/12/2021

Year 2021

Mileage 91,465 Miles
Warranted

Fuel Type Diesel

Colour WHITE

VIN ZFA26300006V68667

Body Style Dropside L2

MOT Due 30/12/2025

CAP Clean £6,225.00

CAP Average £5,650.00

CAP Below £4,750.00

Gearbox MANUAL

Gears 5

WARNING LIGHT ON DASH AD-BLUE

Tyres

NSF

NSR

OSF

OSR

Spare

Features

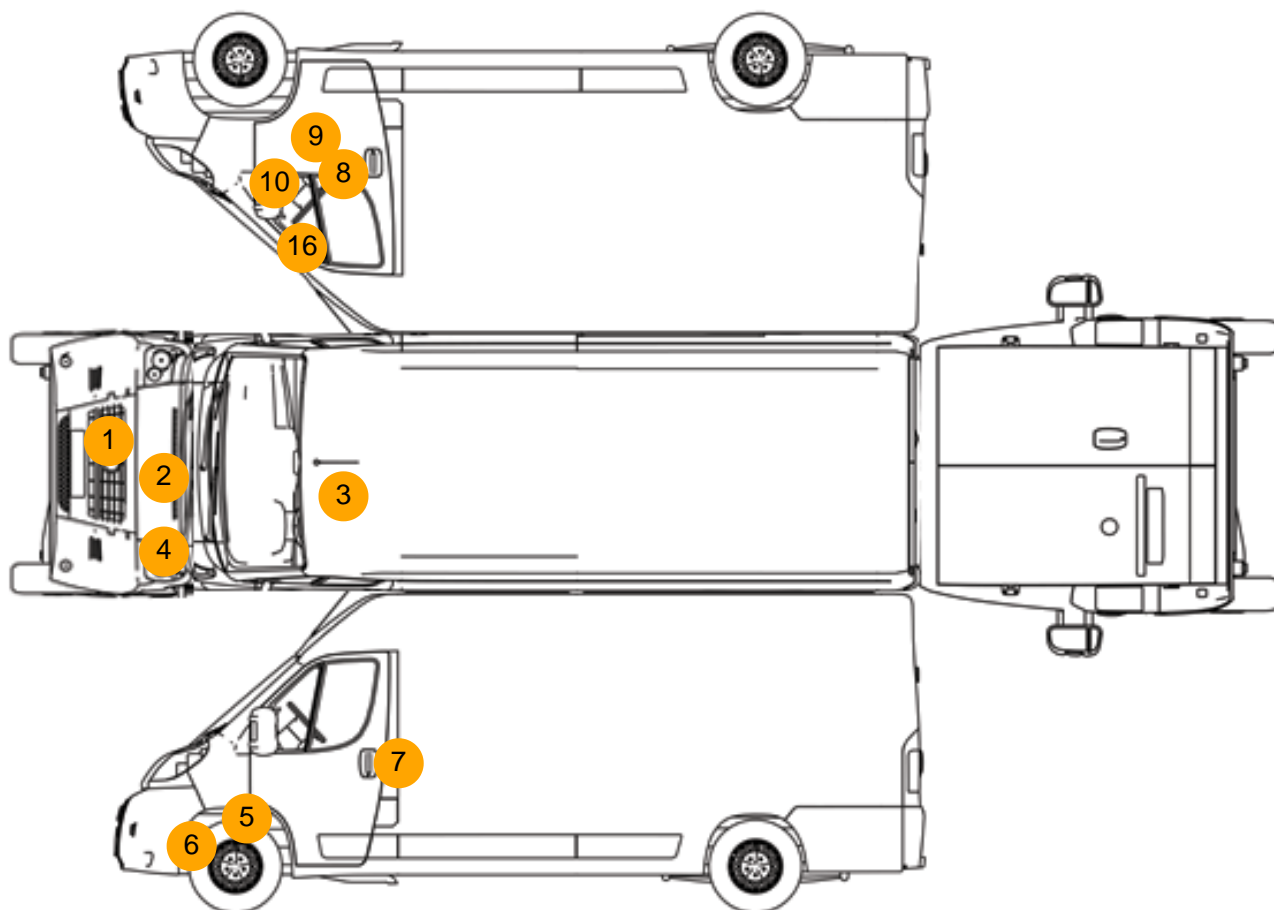
- Park assist camera
- Radio/CD
- Front electric windows
- Drivers airbag
- Passenger airbag
- Central locking
- Cloth seat trim

Photos





Condition Check



Damage Photos



1: Bumper Front Moulding
Missing
Replace



2: Bonnet
Chipped
Multiple Chips



3: Roof
Dented
Over 30mm



4: Bonnet
Dented
Over 30mm



5: Wing nsf
Dented
With Paint Damage



6: Bumper Front
Scratched
Over 100mm Thru Paint



7: Door nsf
Dented
Over 30mm



8: Door osf
Scratched
Over 25mm Thru Paint



9: Door osf
Chipped
Multiple Chips



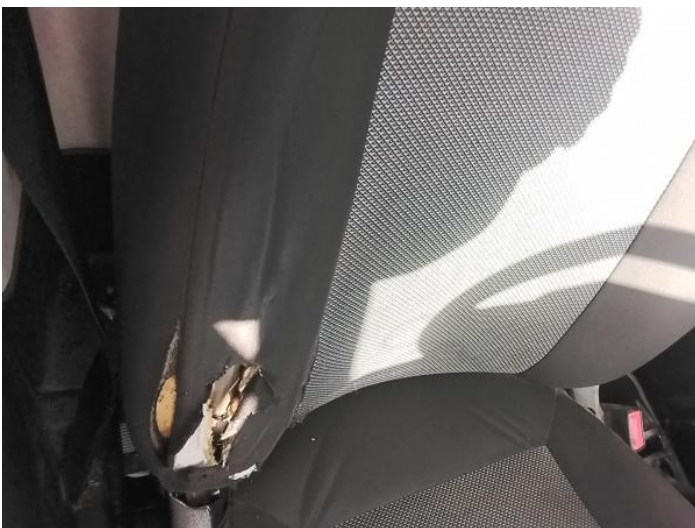
10: Wing osf
Dented
Over 30% Of Panel



11: Carpets Front
Holed
Over 3mm



12: Seat Base Cover osf
Torn
Over 3mm



13: Seat Back Cover osf
Holed
Over 3mm



14: Seat Base Cover nsf
Soiled
Heavy



15: Dash Warning Lights
Displayed
No Action



16: Door Mirror Assy osf
Broken
Replace

Interior

Carpet Condition		Poor	Upholstery Condition		OK
Seat Condition		Poor	Odour		No
Engine Runs		OK	No Excessive Smoking		OK
EML light illuminated		Fault	DPF light illuminated		Fault
ABS light illuminated		OK			