

# VEHICLE INSPECTION REPORT

**SH71GHB**

## FIAT DOBLO CARGO 16V 1.6 Multijet

### Inspection

Serious Damage? No

### Vehicle

VAT Plus VAT

V5 Present

### Details

Reg. date 31/12/2021

Year 2021

Mileage 79,321 Miles  
Warranted

Fuel Type Diesel

Colour WHITE

VIN ZFA26300006V65504

Body Style Dropside L2

MOT Due 17/01/2026

CAP Clean £6,700.00

CAP Average £6,075.00

CAP Below £5,100.00

Gearbox MANUAL

Gears 5

\*WARNING LIGHTS ON DASH\* AD-BLUE

### Tyres

NSF

NSR

OSF

OSR

Spare

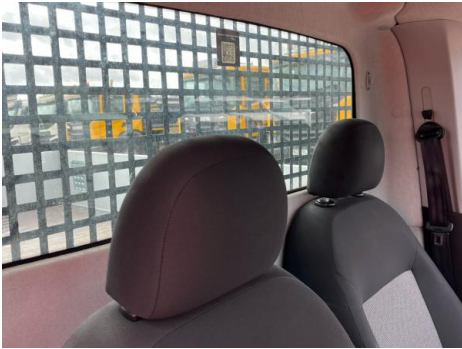
## Features

- Park assist camera
- Radio/CD
- Front electric windows
- Drivers airbag
- Passenger airbag
- Central locking
- Cloth seat trim

## Photos

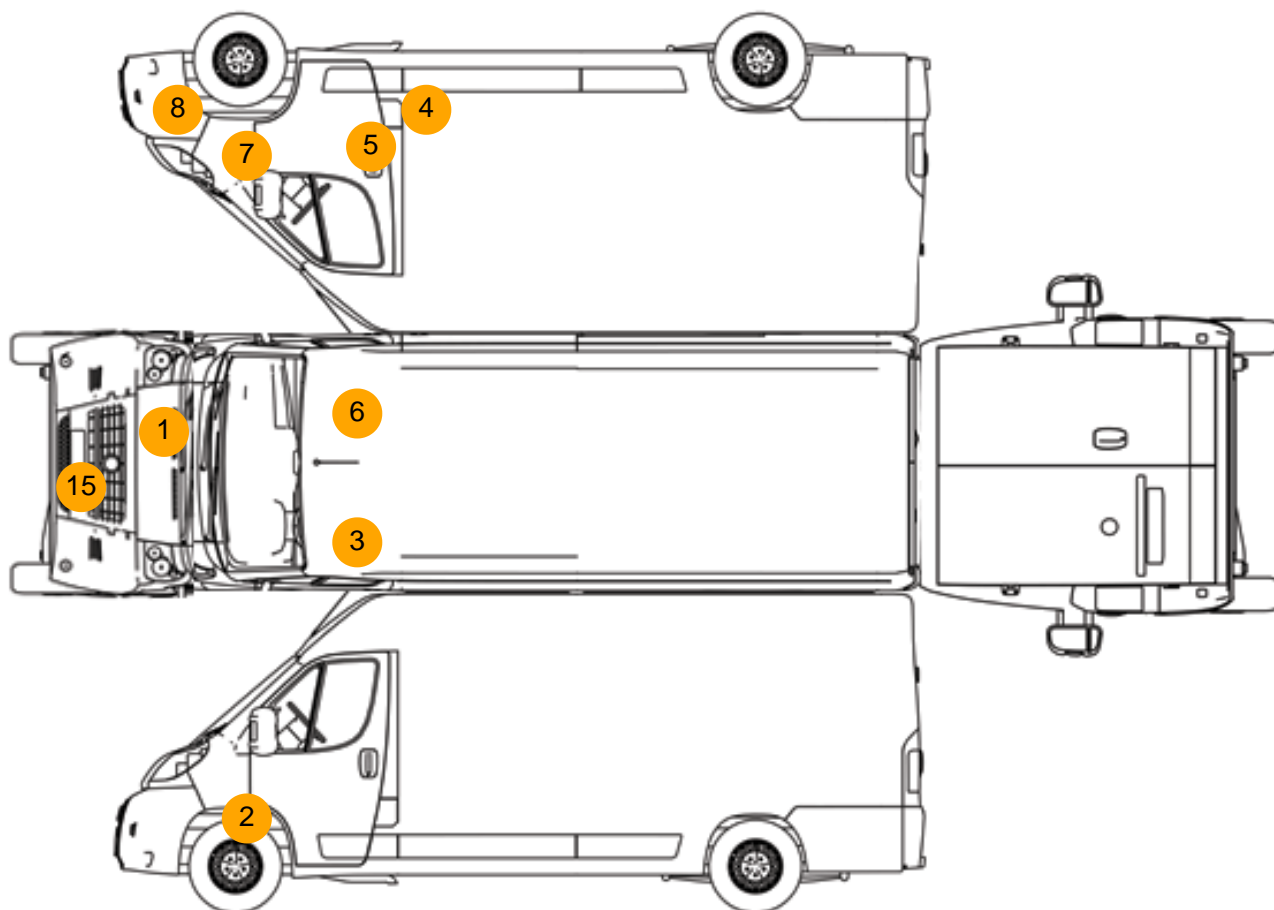








## Condition Check



## Damage Photos



1: Bonnet  
Dented  
With Paint Damage



2: Wing nsf  
Dented  
With Paint Damage



3: Roof  
Dented  
Over 30mm



4: B Post os  
Dented  
Over 30% Of Panel



5: Door osf  
Dented  
With Paint Damage



6: Roof  
Dented  
Over 30mm



7: Wing osf  
Dented  
Over 30mm



8: Bumper Front  
Scratched  
Over 100mm Thru Paint





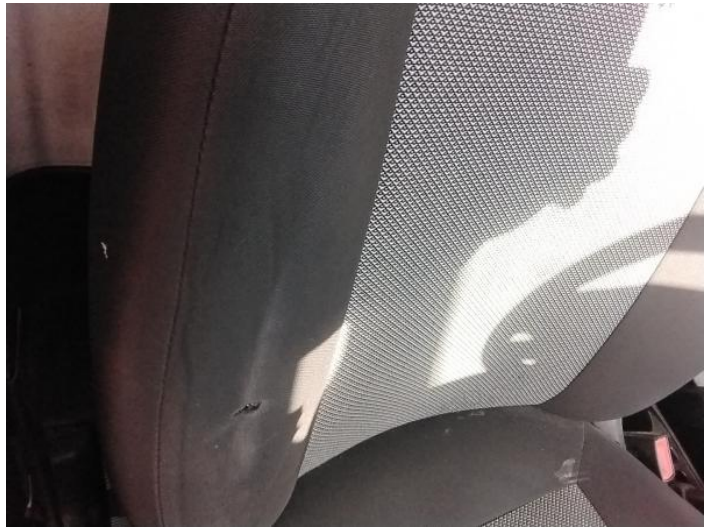
9: Carpets Front  
Holed  
Over 3mm



10: Fascia Panel  
Missing  
Replace



11: Seat Base Cover osf  
Torn  
Over 3mm



12: Seat Back Cover osf  
Holed  
Over 3mm



13: Seat Base Cover nsf  
Soiled  
Heavy



14: Dash Warning Lights  
Displayed  
No Action



15: Number Plate Front  
Broken  
Replace

Interior

<b>Carpet Condition</b>	Poor	<b>Upholstery Condition</b>	Poor
<b>Seat Condition</b>	Poor	<b>Odour</b>	No
Engine Runs	OK	No Excessive Smoking	OK
EML light illuminated	Fault	DPF light illuminated	OK
ABS light illuminated	OK		