

# VEHICLE INSPECTION REPORT

**DK17LYV**

## Man TGM 18.250

### Inspection

Serious Damage? No

### Vehicle

VAT Plus VAT

V5 To Follow

### Details

Reg. date	17/08/2017	Colour	WHITE	Cab Type	L CAB
Year	2017	VIN	WMAN18ZZ2HY363712	Gearbox	AUTOMATIC
Mileage	590,300 Km Warranted	Body Style	Flatbed & Crane	Axle Combi	4x2
Fuel Type	DIESEL	MOT Due	30/06/2026	Rear Suspension	Steel

SERVICE SCHEDULE LIST AVAILABLE, HMF 1420 REMOTE CRANE (YEAR 2016)

### Tyres

NSF	NSI1	NSI2	NSI3	NSI4
OSF	OSI1	OSI2	OSI3	OSI4
Spare	NSO1	NSO2	NSO3	NSO4
	OSO1	OSO2	OSO3	OSO4

## Features

- Air conditioning

## Photos

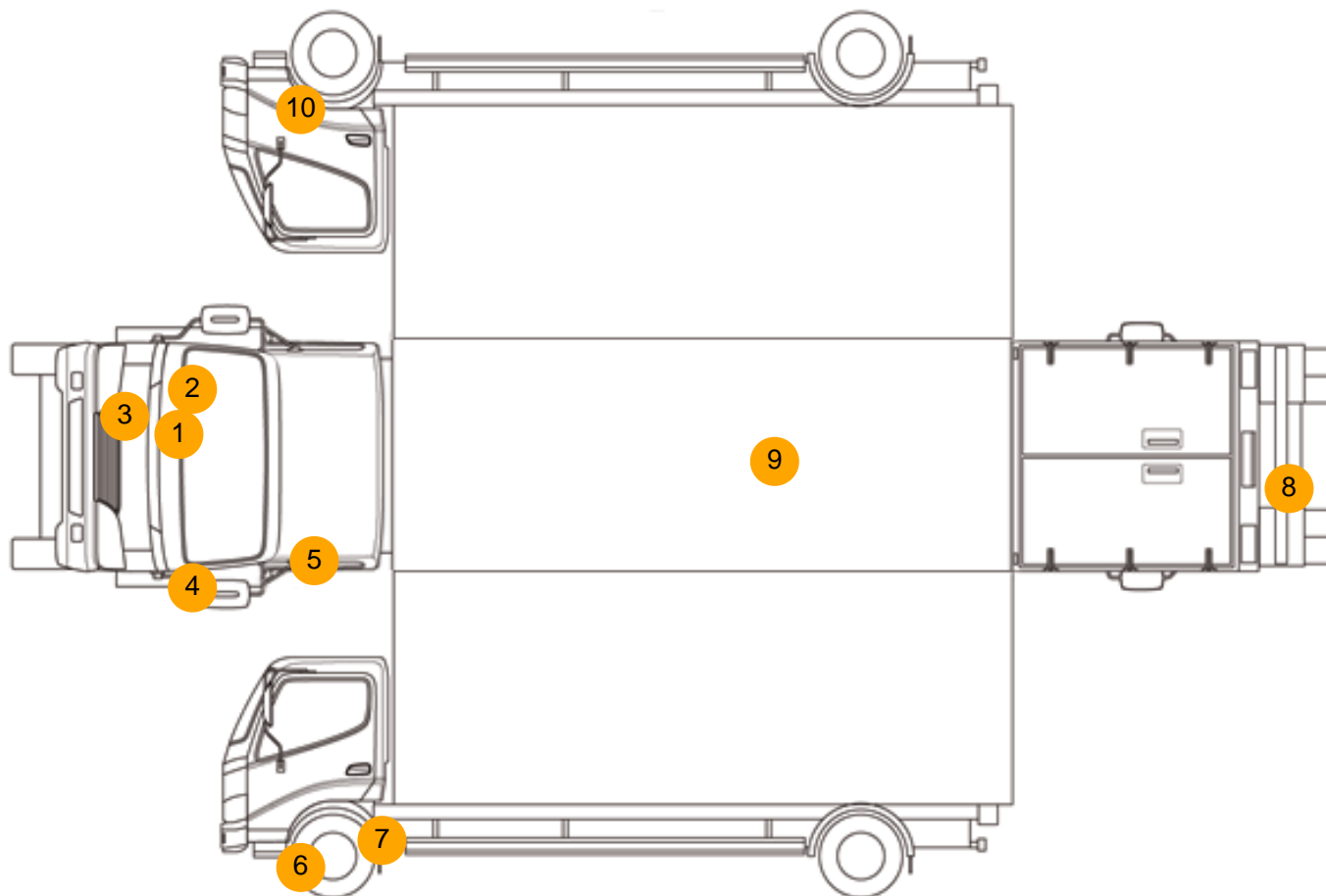








## Condition Check



## Damage Photos



1: Bonnet  
Cracked  
Replace



2: Wing osf  
Chipped  
Multiple Chips



3: Fog Lamp Surround ns  
Scratched (Painted)  
Over 25mm Thru Paint



4: Wing nsf  
Scratched  
UpTo 25mm Thru Paint



5: Door Mirror Assy nsf  
Missing  
Replace



6: Other  
N/A  
N/A



7: Other  
N/A  
N/A



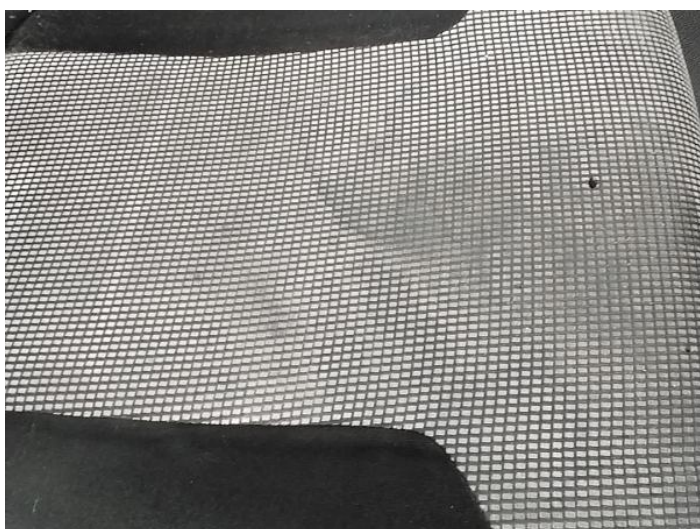
8: Bumper Rear  
Rusted  
Over 5mm





9: Other  
N/A  
N/A

10: Other  
N/A  
N/A



11: Seat Base Cover osf  
Burn  
Over 3mm

12: Other  
N/A  
N/A

## Interior

**Carpet Condition** OK  
**Seat Condition** OK

**Upholstery Condition** OK  
**Odour** -

Engine Runs	OK	Gearbox 1st and Reverse Test	OK
Brakes	OK	Clutch Slip Test from Static	OK
Parking Brake	OK	Gearbox Static Gear Selection (engine running)	OK
		No Excessive Smoking	OK
EML light illuminated	OK	Oil warning light illuminated	OK
Airbag light illuminated	OK	DPF light illuminated	OK
ABS light illuminated	OK	Service indicator light illuminated	OK