

# VEHICLE INSPECTION REPORT

**PN22GUH**

## Daf XG 480

### Inspection

Serious Damage? No

### Vehicle

VAT Plus VAT

V5 Present

### Details

Reg. date	01/06/2022	VIN	XLRTGF5300G395205	Axle Combi	6x2
Year	2022	Body Style	Tractor Unit	Steering Combi	Mid-Lift
Mileage	399,130 Km Warranted	MOT Due	30/04/2026	Rear Suspension	Air
Fuel Type	Diesel	Cab Type	SLEEPER CAB		
Colour	RED	Gearbox	AUTOMATIC		

SLIDING 5TH WHEEL, MIRROR CAMS

### Tyres

NSF	NSI1	NSI2	NSI3	NSI4
OSF	OSI1	OSI2	OSI3	OSI4
Spare	NSO1	NSO2	NSO3	NSO4
	OSO1	OSO2	OSO3	OSO4

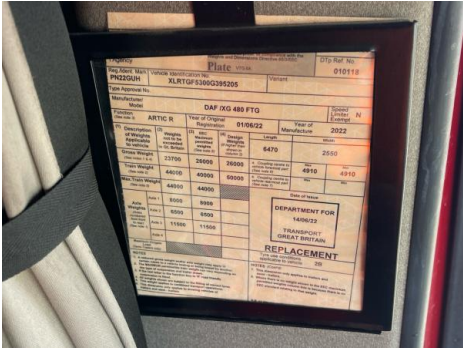
## Features

- Bluetooth connection
- Navigation system
- USB/iPod interface
- Central locking
- Cruise control
- Park assist camera
- LED headlights
- Cloth seat trim
- Front parking sensor
- Rear parking sensor
- Air conditioning
- Heated front seat
- Mobile phone App interface
- Front electric windows

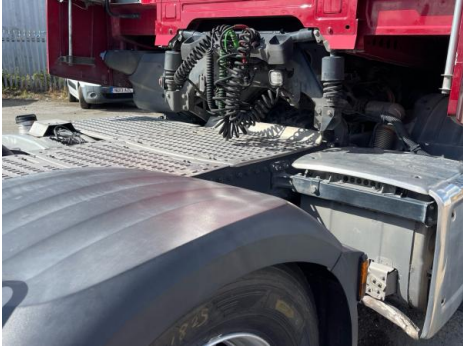
## Photos



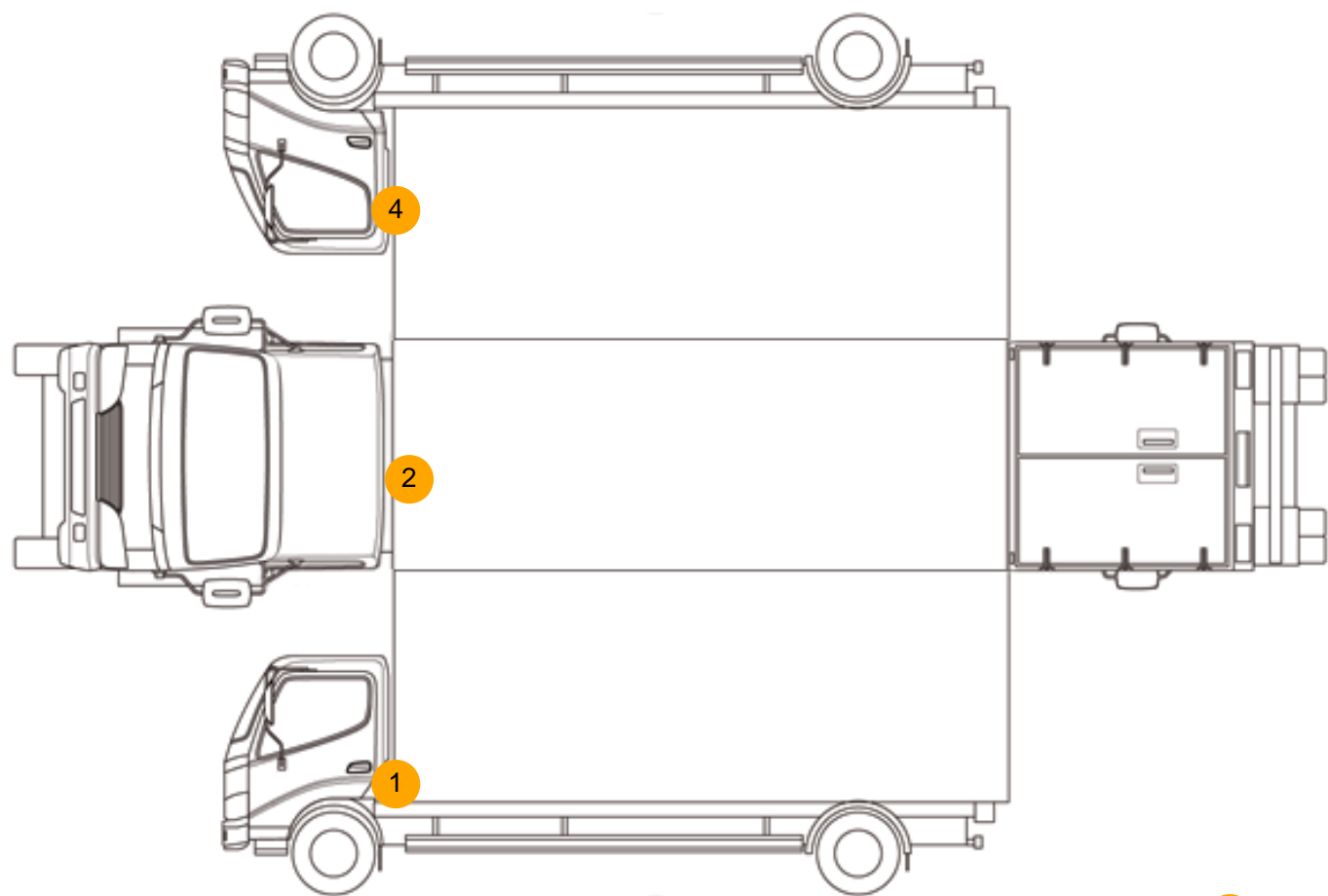








Condition Check



Damage Photos



1: Door nsf  
Chipped  
Edge Chip



2: Other  
N/A  
N/A



3: Panel Front  
Chipped  
Over 5mm



4: Door osf  
Chipped  
Edge Chip

**Interior**

<b>Carpet Condition</b>	OK	<b>Upholstery Condition</b>	OK
<b>Seat Condition</b>	OK	<b>Odour</b>	-
Engine Runs	OK	Gearbox 1st and Reverse Test	OK
Brakes	OK	Clutch Slip Test from Static	OK
Turbo Boosting	OK	Gearbox Static Gear Selection (engine running)	OK
Parking Brake	OK	No Excessive Smoking	OK
EML light illuminated	OK	Oil warning light illuminated	OK
Airbag light illuminated	OK	DPF light illuminated	OK
ABS light illuminated	OK	Service indicator light illuminated	OK
Windows	OK	Radio	OK
Sat nav	OK	Steering	OK