

VEHICLE INSPECTION REPORT

FG17NMU

Daf CF 260

Inspection

Conditions	Outdoors - Good light
Serious Damage?	No

Vehicle

VAT	Plus VAT
V5	To Follow

Details

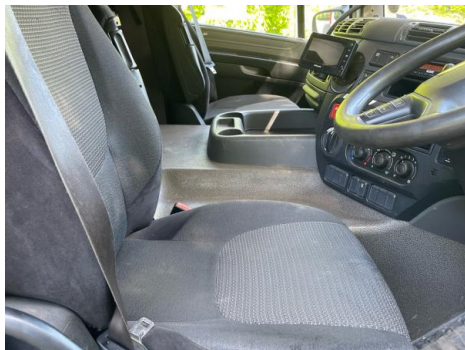
Reg. date	01/05/2017	VIN	XLRAEM3700G142048	Gearbox	Automatic
Year	2017	Body Style	Curtainside	Axle Combi	4x2
Mileage	423,156 Km Not Warranted	Keys	1	Rear Suspension	Air
Fuel Type	Diesel	MOT Due	31/10/2025	Rear Doors	Barn
Colour	White	Cab Type	SLEEPER CAB		

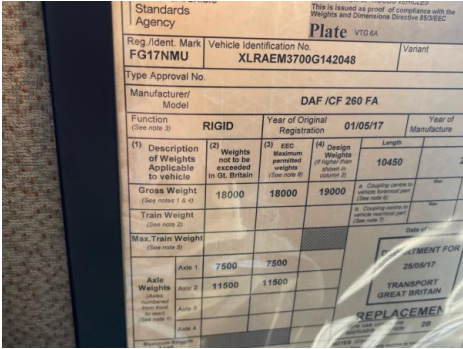
SLEEPER CAB, BARN DOORS, GLASS CARRIER FRAME WORK

Tyres

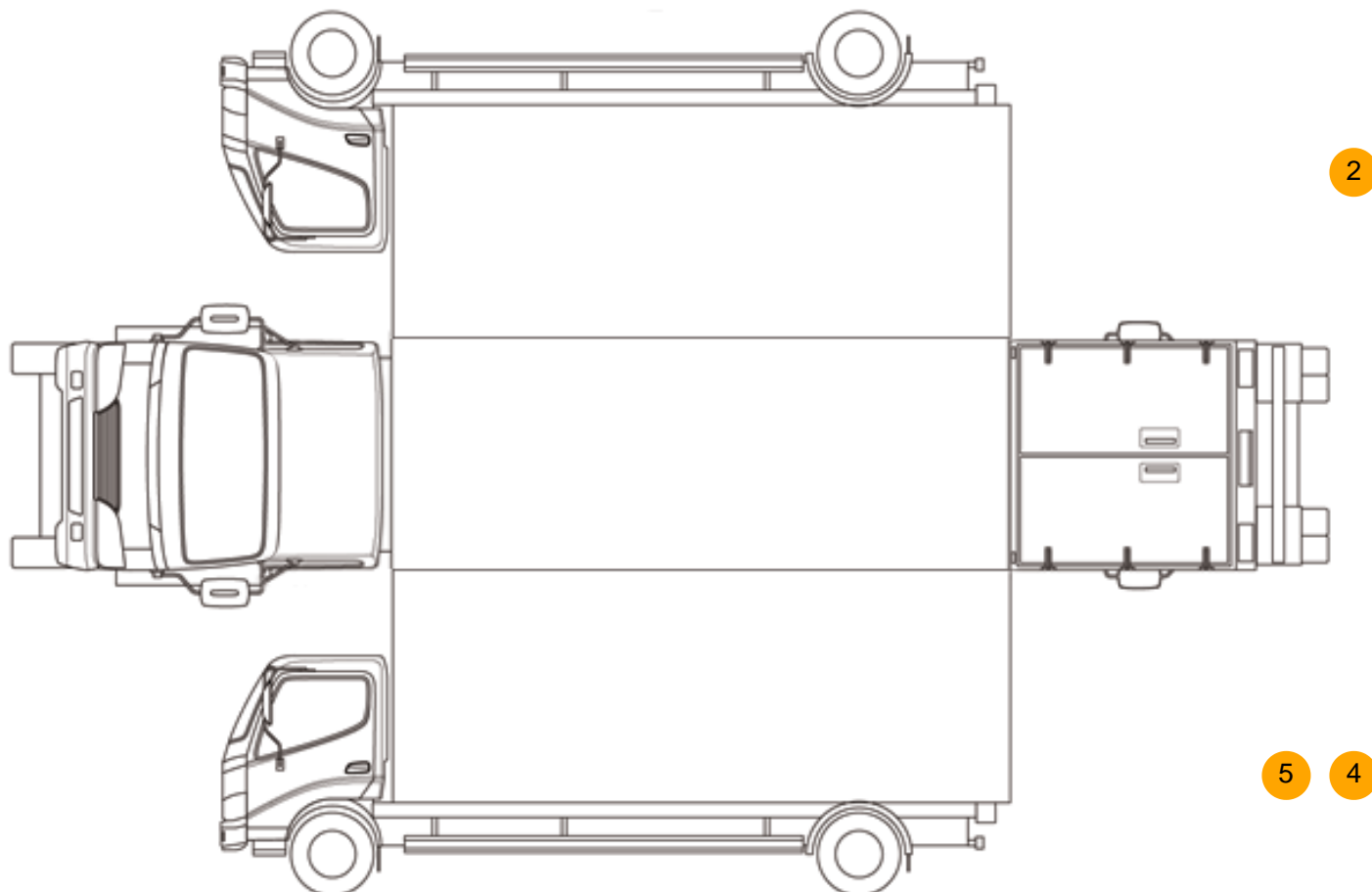
NSF	NSI1	NSI2	NSI3	NSI4
OSF	OSI1	OSI2	OSI3	OSI4
Spare	NSO1	NSO2	NSO3	NSO4
	OSO1	OSO2	OSO3	OSO4

Photos





Condition Check



Damage Photos



1: Sill os
Rusted
Over 5mm



2: Door osf
Dented
Over 30mm



3: Qtr Panel osr
Dented
Over 30mm



4: Tailgate
Dented
Over 30mm



5: Door nsf
Dented
Over 30mm



6: Bumper Front
Scratched
25 to 100mm Thru Paint

Interior

Carpet Condition	Average
Seat Condition	Average

Upholstery Condition	Average
Odour	-