

VEHICLE INSPECTION REPORT

FN19KNS

Daf XF 480

Inspection

Conditions	Outdoors - Good light
Serious Damage?	No

Vehicle

VAT	Plus VAT
V5	Buyer To Apply

Details

Reg. date	01/03/2019	VIN	XLRTGH4300G250943	Gearbox	AUTOMATIC
Year	2019	Body Style	Tractor Unit	Doors	2
Mileage	563,704 Km Not Warranted	Keys	1	Axle Combi	6x2
Fuel Type	Diesel	MOT Due	31/01/2026	Rear Suspension	Air
Colour	Blue	Cab Type	SPACE CAB		

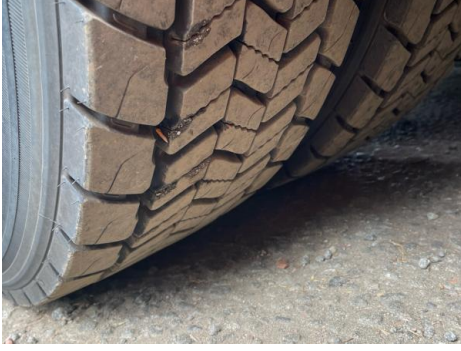
SPACE CAB, A/C, MID LIFT & STEER, SLIDING 5TH WHEEL *WARNING LIGHT ON DASH* EML

Tyres

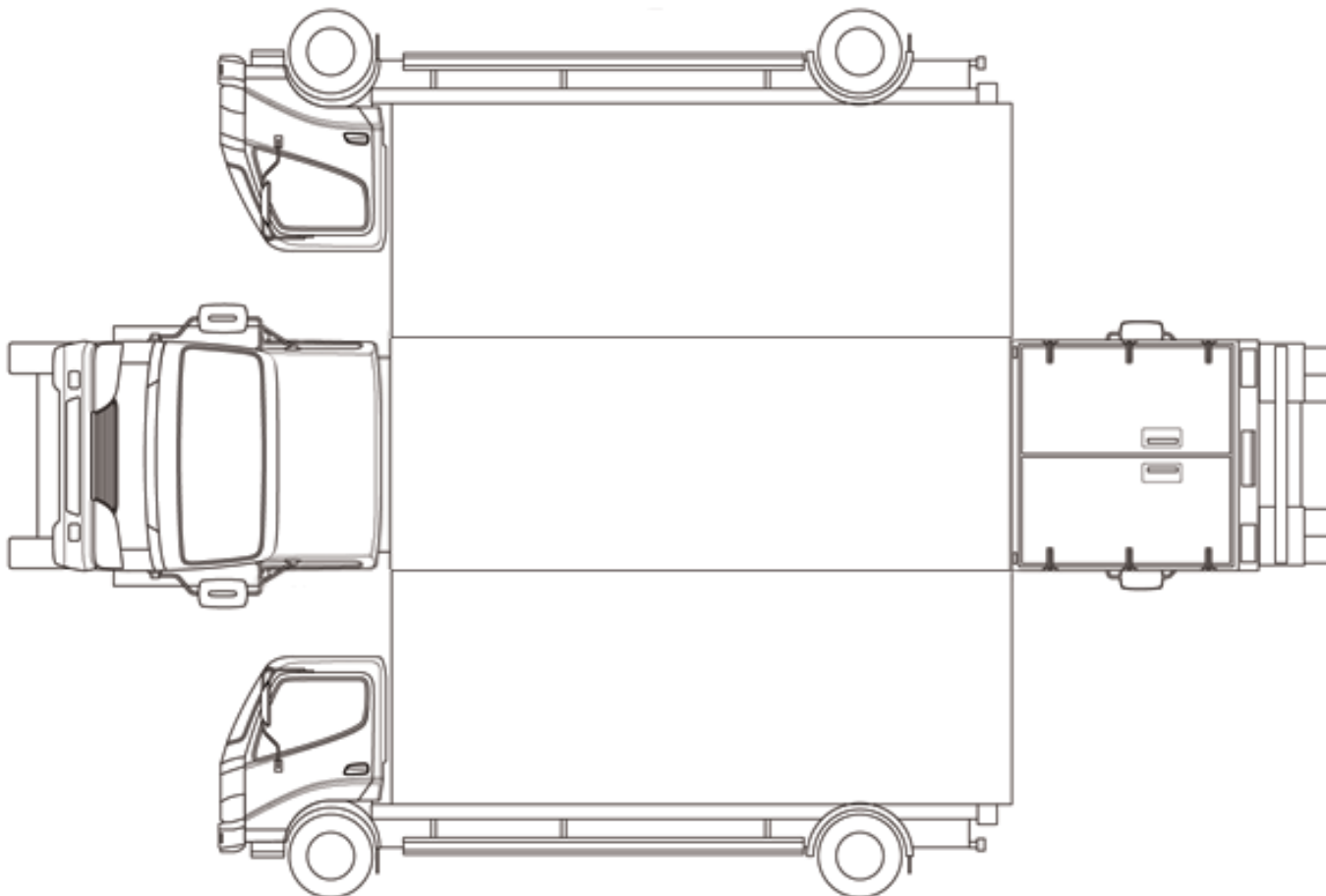
NSF	NSI1	NSI2	NSI3	NSI4
OSF	OSI1	OSI2	OSI3	OSI4
Spare	NSO1	NSO2	NSO3	NSO4
	OSO1	OSO2	OSO3	OSO4

Photos





Condition Check



Damage Photos



1: Carpets Front
Holed
Over 3mm



2: Door Moulding osf
Scuffed (Unpainted)
Over 100mm



3: Bonnet
Chipped
Multiple Chips



4: Wing osf
Chipped
Multiple Chips



5: Wing nsf
Chipped
Multiple Chips



6: Door osf
Dented
With Paint Damage



7: Qtr Panel osr
Rusted
Over 5mm



8: Qtr Panel nsr
Dented
With Paint Damage



9: Door nsf
Scratched
UpTo 25mm Thru Paint

Interior

Carpet Condition	Average	Upholstery Condition	Average
Seat Condition	Average	Odour	-

Mechanical Inspection

Important Notice: Customer must satisfy themselves that the health check is as stated by 5pm day after sale and prior to leaving centre. If vehicle has been delivered we must be notified within two hours of arrival at your dealership.

EML light illuminated	Fault
-----------------------	-------