

VEHICLE INSPECTION REPORT

SJ17SUF

Mercedes-Benz Econic 2630

Inspection

Serious Damage? No

Vehicle

VAT Plus VAT
V5 Buyer To Apply

Details

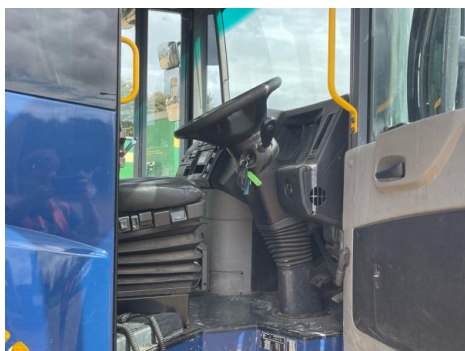
Reg. date	03/07/2017	Colour	BLUE	Gearbox	AUTOMATIC
Year	2017	VIN	WDB9560332V247674	Axle Combi	6x2
Mileage	130,775 Km Not Warranted	Body Style	Dropside	Steering Combi	Rear-Lift Steer
Fuel Type	DIESEL	Cab Type	CREW CAB	Rear Suspension	Steel

WARNING LIGHT ON DASH *MILEAGE RECORDED IN MILES & KM ON MOT HISTORY* REAR STEAR AXLE

Tyres

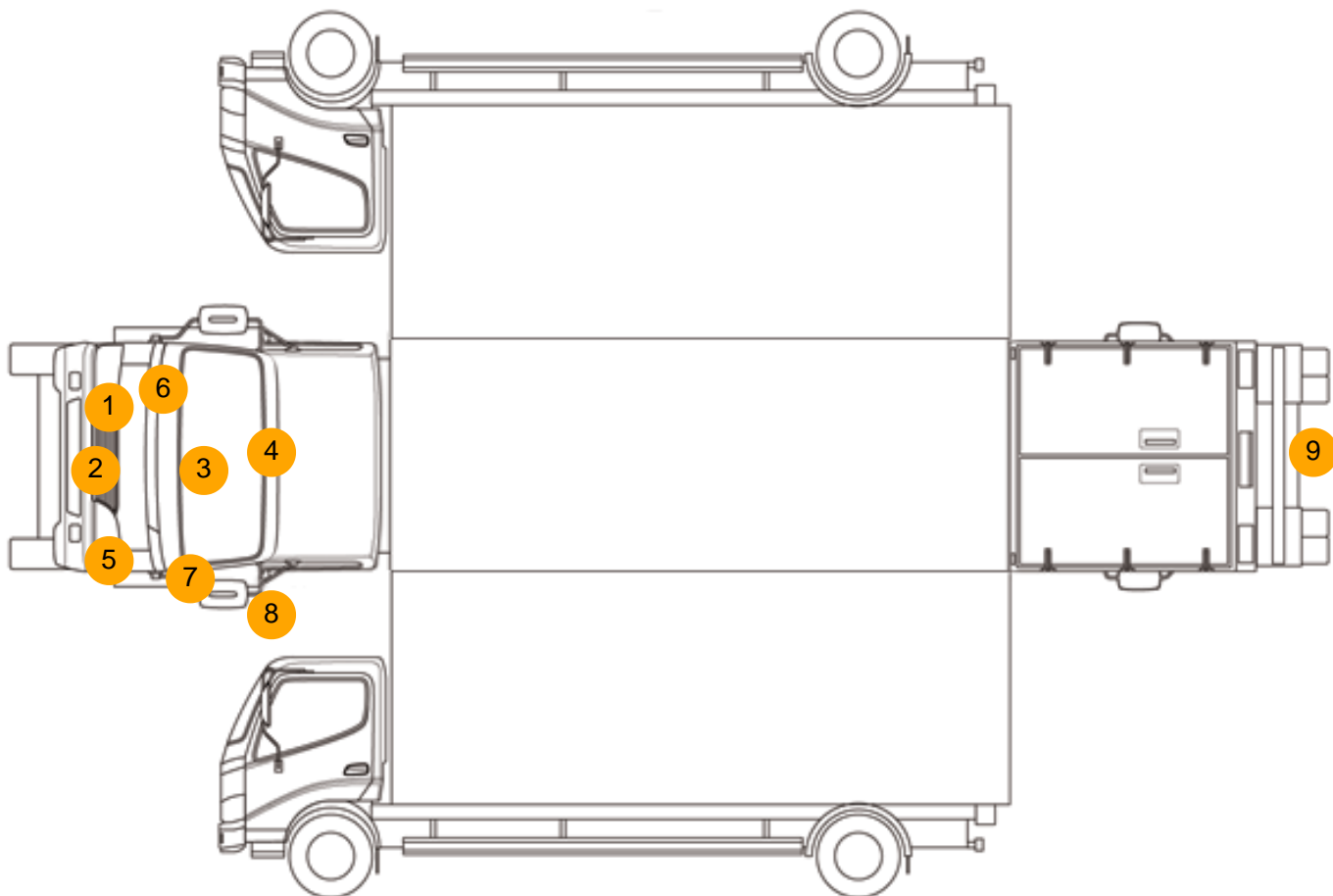
NSF	NSI1	NSI2	NSI3	NSI4
OSF	OSI1	OSI2	OSI3	OSI4
Spare	NSO1	NSO2	NSO3	NSO4
	OSO1	OSO2	OSO3	OSO4

Photos





Condition Check



Damage Photos



1: Fog Lamp Surround os
Scratched (Painted)
UpTo 25mm Thru Paint



2: Bumper Front
Scratched
25 to 100mm Thru Paint



3: Panel Front
Scratched
UpTo 25mm Thru Paint



4: Screen Front
Chipped
UpTo 10mm



5: Fog Lamp Surround ns
Broken
Replace



6: Wing osf
Chipped
Multiple Chips



7: Wing nsf
Scratched
UpTo 25mm Not Thru Paint



8: Door Mirror Assy nsf
Scuffed (Unpainted)
UpTo 100mm



9: Bumper Rear
Rusted
Over 5mm



10: Seat Base Cover osf
Holed
Over 3mm

Interior

Carpet Condition	Average		Upholstery Condition	Average
Seat Condition	Average		Odour	-
Engine Runs	OK		Gearbox 1st and Reverse Test	OK
Brakes	OK		Clutch Slip Test from Static	OK
Parking Brake	OK		Gearbox Static Gear Selection (engine running)	OK
			No Excessive Smoking	OK
EML light illuminated	OK		Oil warning light illuminated	OK
Airbag light illuminated	OK		DPF light illuminated	OK
ABS light illuminated	Fault		Service indicator light illuminated	OK