

VEHICLE INSPECTION REPORT

PF66KLU

Daf LF 230

Non Runner

Inspection

Serious Damage? No

Vehicle

VAT Plus VAT

V5 To Follow

Details

Reg. date	23/11/2016	VIN	XLRAEL3700L460216	Axle Combi	4x2
Year	2016	Body Style	Box Van	Rear Suspension	Steel
Mileage	558,504 Km Warranted	MOT Due	30/09/2025	Tail Lift	Cantilever
Fuel Type	DIESEL	Cab Type	DAY CAB		
Colour	RED	Gearbox	AUTOMATIC		

NON RUNNER, POWERS UP DOES NOT CRANK, PARTIALLY STRIPPED

Tyres

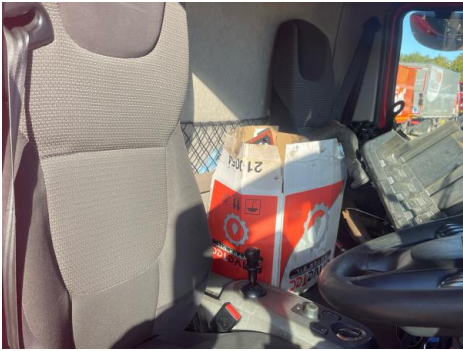
NSF	NSI1	NSI2	NSI3	NSI4
OSF	OSI1	OSI2	OSI3	OSI4
Spare	NSO1	NSO2	NSO3	NSO4
	OSO1	OSO2	OSO3	OSO4

Features

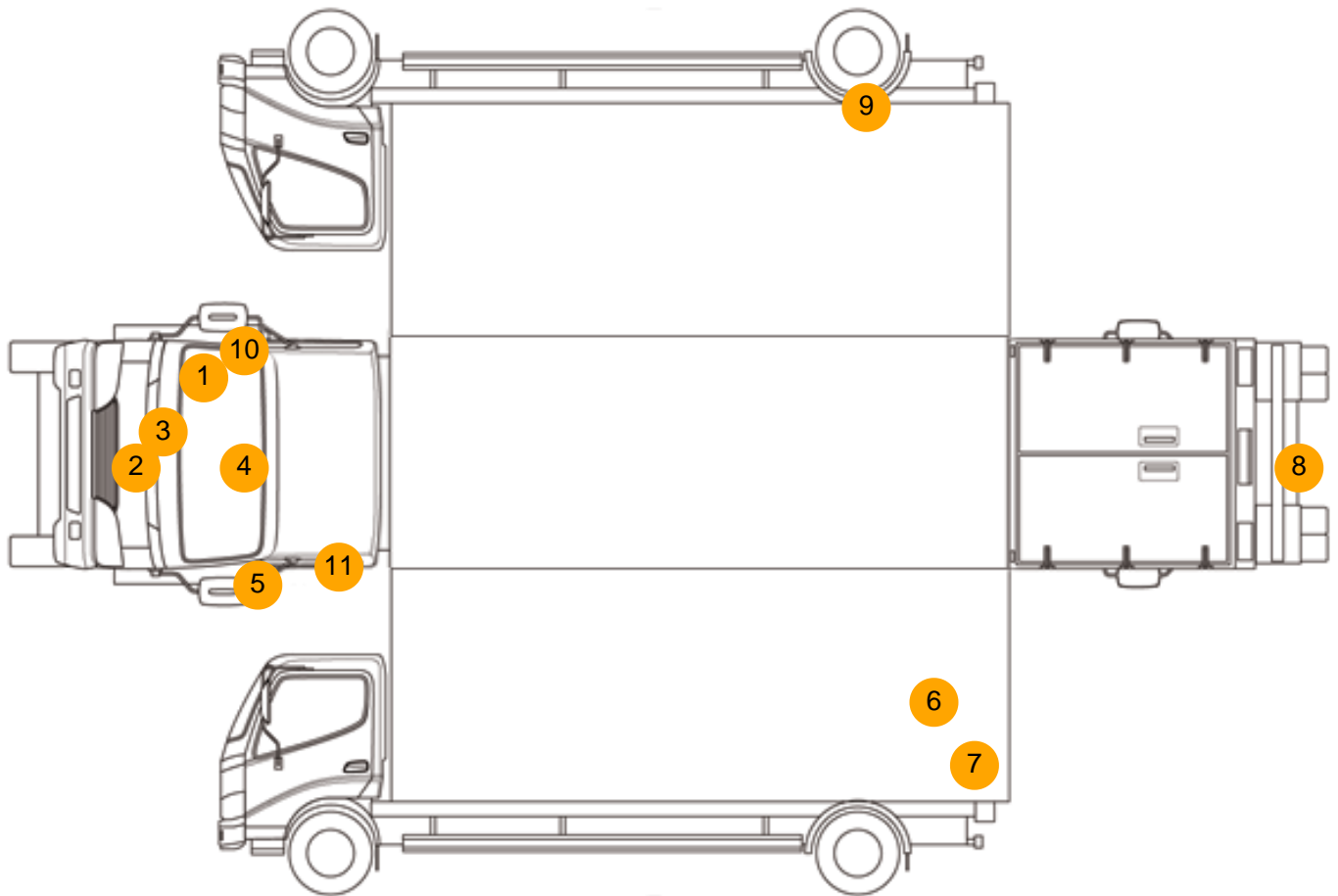
- Air conditioning

Photos





Condition Check



Damage Photos



1: Wing osf
Scratched
Over 25mm Thru Paint



2: Grille Front
Missing
Replace



3: Bonnet
Chipped
Multiple Chips



4: Screen Front
Chipped
Over 10mm



5: Door Mirror Assy nsf
Scuffed (Unpainted)
UpTo 100mm



6: Qtr Panel nsr
Scratched
Over 25mm Thru Paint



7: Qtr Panel nsr
Cracked
Replace



8: Bumper Rear
Rusted
Over 5mm



9: Other
N/A
N/A



10: Door Mirror Assy osf
Scuffed (Unpainted)
UpTo 100mm



11: Other
N/A
N/A



12: Seat Base Cover osf
Torn
Over 3mm



13: Other
N/A
N/A

Interior

Carpet Condition	Average	Upholstery Condition	Average
Seat Condition	Average	Odour	-
Engine Runs		Fault	