

VEHICLE INSPECTION REPORT

DG670TV

Man TGM 18.250

Inspection

Serious Damage? No

Vehicle

VAT Plus VAT

V5 To Follow

Details

Reg. date	27/09/2017	Colour	BLUE	Cab Type	DAY CAB
Year	2017	VIN	WMAN08ZZXHY364691	Gearbox	MANUAL
Mileage	269,222 Km Warranted	Body Style	Dropside & Crane	Axle Combi	4x2
Fuel Type	DIESEL	MOT Due	30/06/2026	Rear Suspension	Steel

WARNING LIGHT ON DASH SERVICE SCHEDULE LIST AVAILABLE, HMF 1420K REMOTE CRANE (YEAR 2017)

Tyres

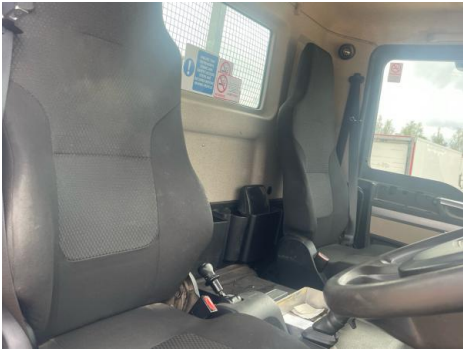
NSF	NSI1	NSI2	NSI3	NSI4
OSF	OSI1	OSI2	OSI3	OSI4
Spare	NSO1	NSO2	NSO3	NSO4
	OSO1	OSO2	OSO3	OSO4

Features

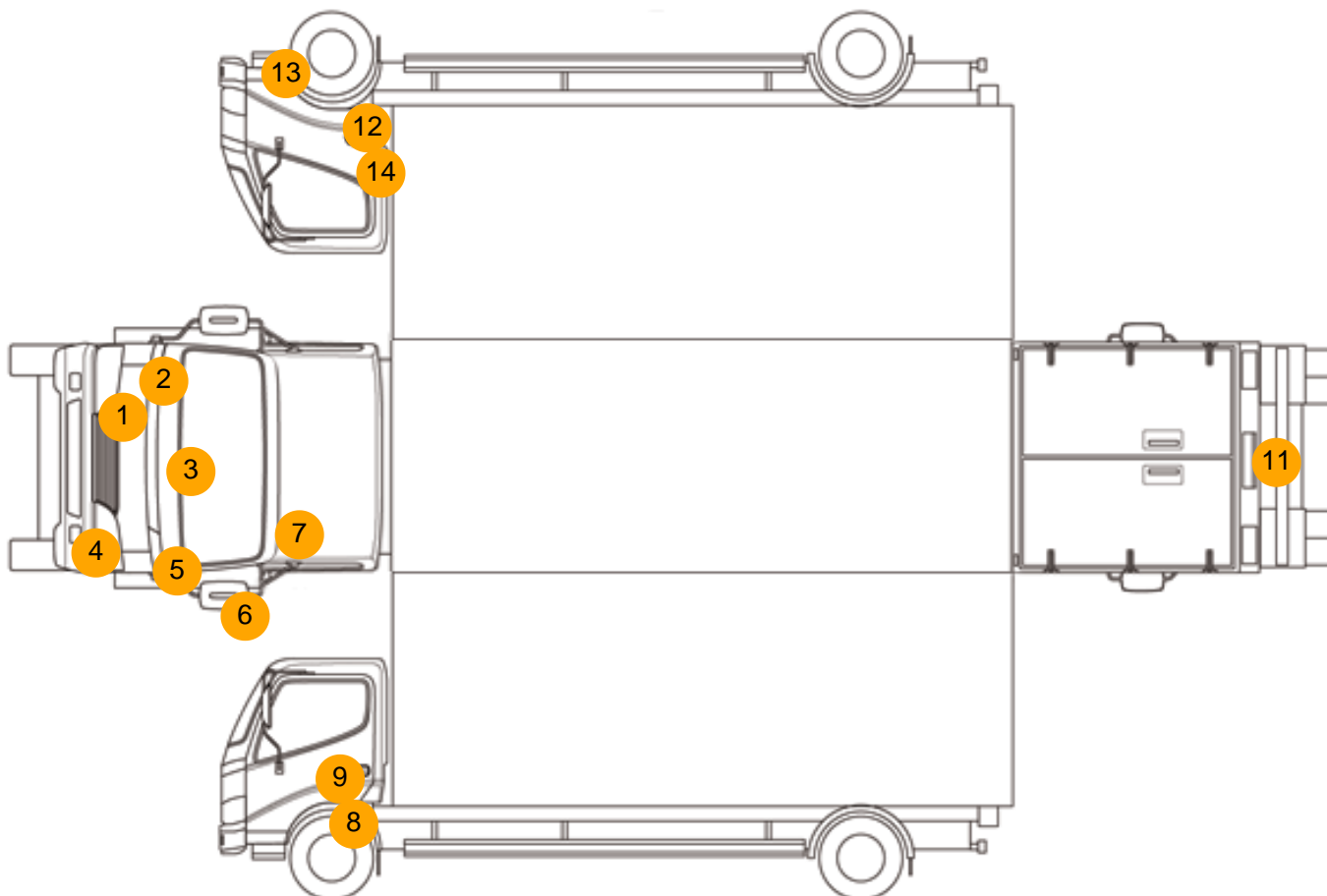
- Park assist camera

Photos





Condition Check



Damage Photos



1: Fog Lamp Surround is Scuffed (Unpainted) Over 100mm



2: Wing is Scratched Up To 25mm Thru Paint



3: Bonnet
Chipped
Multiple Chips



4: Fog Lamp Surround ns
Broken
Replace



5: Wing nsf
Scratched
UpTo 25mm Thru Paint



6: Door Mirror Assy nsf
Broken
Replace



7: Door Mirror Assy nsf
Missing
Replace



8: Other
N/A
N/A



9: Door nsf
Dented
With Paint Damage



10: Door Pad nsf
Missing
Replace



11: Bumper Rear
Rusted
Over 5mm



12: Other
N/A
N/A



13: Other
N/A
N/A



14: Door osf
Scratched
UpTo 25mm Thru Paint



15: Seat Base Cover osf
Holed
Over 3mm

16: Other
N/A
N/A

Interior

Carpet Condition		Average	Upholstery Condition		Average
Seat Condition		Average	Odour		-
Engine Runs	OK		Gearbox 1st and Reverse Test	OK	
Brakes	OK		Clutch Slip Test from Static	OK	
Parking Brake	OK		Gearbox Static Gear Selection (engine running)	OK	
			No Excessive Smoking	OK	
EML light illuminated	Fault		Oil warning light illuminated	OK	
Airbag light illuminated	OK		DPF light illuminated	OK	
ABS light illuminated	OK		Service indicator light illuminated	OK	